



2025 Agricultural Water Management Plan (AWMP)

Kern Delta Water District

March 2026



KERN DELTA WATER DISTRICT



2025 Agricultural Water Management Plan

March 11, 2026



1301 Mariner Village Parkway, Suite 220
Alameda, CA 94501
510.747.6920
www.toddgroundwater.com

Table of Contents

1	Plan Preparation and Adoption.....	1
1.1	Previous Water Management Activities.....	1
1.2	Coordination Activities.....	2
1.3	AWMP Adoption, Submittal and Availability	3
1.4	AWMP Implementation Schedule.....	4
1.5	AWMP Checklist	4
2	Description of KDWD and Service Area	5
2.1	Background and Physical Characteristics	5
2.1.1	Size and Location of Service Area.....	5
2.1.2	Water Management Facilities	6
2.1.3	Service Area Terrain and Soils	9
2.1.4	Climate.....	10
2.2	Operational Information	11
2.2.1	Operating Rules and Regulations	11
2.2.2	Water Delivery Measurements/Calculations	14
2.2.3	Water Rate Schedules and Billing.....	14
2.2.4	Water Shortage Allocation Policies and Drought Plan	16
3	Description of Quantity of Water Uses.....	17
3.1	Basis for Reporting Water Quantities	17
3.2	Agricultural Water Use.....	17
3.3	Environmental Water Use.....	24
3.4	Recreational Water Use	25
3.5	Municipal and Industrial Use.....	25
3.6	Groundwater Recharge Use	25
3.7	Other Water Use	26
4	Description of Quantity and Quality of Water Resources.....	27
4.1	Water Supply Quantity.....	27
4.1.1	Surface Water Supply	27
4.1.2	Groundwater Supply	29
4.1.3	Other Water Supplies	30

4.2	Water Supply Quality	30
4.2.1	Surface Water Quality	31
4.2.2	Groundwater Quality.....	31
4.2.3	Other Water Quality.....	34
4.2.4	Source Water Quality Monitoring	34
5	Water Budget.....	36
5.1	Quantifying KDWD’s Water Supplies	36
5.1.1	Other Water Sources Quantities	36
5.2	Quantification of Water Uses.....	37
5.3	Annual Water Budget.....	38
5.4	Identify Water Management Objectives.....	40
5.5	Quantify the Efficiency of Agricultural Water Use	41
6	Climate Change	43
7	Water Use Efficiency Information.....	45
7.1	Efficient Water Management Practices Implementation and Reporting	45
7.2	EWMP Implementation Schedule	48
8	Supporting Documentation.....	50
8.1	Agricultural Water Measurement Regulation Documentation.....	50
8.2	Delta Plan Consistency	50
9	References.....	54

List of Tables

Table 1.	Summary of Coordination, Adoption, and Submittal Activities	3
Table 2.	Water Supplier Information	6
Table 3.	Water Conveyance and Delivery System	7
Table 4.	Groundwater Recharge Basins	8
Table 5.	KDWD Isabella Reservoir Storage Rights.....	8
Table 6.	Average Monthly Climate Information	11
Table 7.	Supplier Delivery System and Actual Lead Times.....	12
Table 8.	Water Allocation Policy Basis	13
Table 9.	Water Delivery Measurements	14
Table 10.	2026 Water Rate Basis	15
Table 11.	Annual Agricultural Water Use (AF)	18
Table 12.	Agricultural Crop Data for 2020	19
Table 13.	Agricultural Crop Data for 2021	20
Table 14.	Agricultural Crop Data for 2022	21
Table 15.	Agricultural Crop Data for 2023	22
Table 16.	Agricultural Crop Data for 2024	23
Table 17.	Crop Consumptive Use and Applied Water Demands	24
Table 18.	Irrigated Acreages and Multiple Cropping	24
Table 19.	Municipal/Industrial Groundwater Pumping (AF).....	25
Table 20.	Groundwater Recharge (AF).....	26
Table 21.	KDWD Kern River Water Rights.....	28
Table 22.	Kern River Entitlement Caps from Court Decisions.....	28
Table 23.	Surface Water Supplies (AF).....	29
Table 24.	Groundwater Supplies (AF)	30
Table 25.	Recycled Water Supplies (AF).....	30
Table 26.	Water Quality, 2022	31
Table 27.	Groundwater Quality – South Basin HCM.....	32
Table 28.	Groundwater Quality – KDWD	33
Table 29.	Recycled Water Quality	34
Table 30.	Water Supply Quantities (AF).....	37
Table 31.	Quantify Water Use (AF)	38

Table 32.	Water Budget Inflows (AF)	39
Table 33.	Water Budget Outflows (AF)	39
Table 34.	Crop Consumptive Use Fraction.....	42
Table 35.	Water Management Fraction.....	42
Table 36.	EWMPs Implemented or Planned	45
Table 37.	Non-Implemented EWMPs.....	47
Table 38.	EWMPs Efficiency Improvements	48
Table 39.	Schedule to Implement EWMPs.....	49
Table 40.	Phase One Project Summary for KRGSA in the Kern Subbasin GSP	53

List of Figures (at end of report)

Figure 1	KDWD Location
Figure 2	Water Districts near KDWD
Figure 3	Municipal Water Suppliers near KDWD
Figure 4	KDWD Facilities
Figure 5	Soil Textures in the Vicinity of KDWD
Figure 6	Precipitation at Bakersfield Meadows Field Airport Station
Figure 7	Kern River Indices 1995-2025
Figure 8	Agricultural Crops and Dairies in the Vicinity of KDWD

Appendices

- A. AWMP Checklist
- B. Notification Documentation
- C. Resolution of Plan Adoption
- D. KDWD Rules and Regulations
- E. KDWD Drought Plan
- F. Farm-Gate Delivery Report for 2025

List of Acronyms

AEWSD	Arvin-Edison Water Storage District
AF	acre-feet
AFY	acre-feet per year
AWMP	Agricultural Water Management Plan
BVWSD	Buena Vista Water Storage District
C2VSim	California Central Valley Groundwater-Surface Water Simulation
Cal Water	California Water Service-Bakersfield District
CASGEM	California Statewide Groundwater Elevation Monitoring
cfs	cubic feet per second
CIMIS	California Irrigation Management Information System
City or COB	City of Bakersfield
CVP	Central Valley Project
DDW	California Water Resources Control Board Division of Drinking Water
DWR	California Department of Water Resources
ENCSD	East Niles Community Services District
ET	Evapotranspiration
Eto	Reference Evapotranspiration
EWMP	Efficient Water Management Practice
gpm	gallons per minute
Greenfield CWD	Greenfield County Water District
GSA	Groundwater Sustainability Agency
GSP	Groundwater Sustainability Plan
GWMP	Groundwater Management Plan
ID4	Improvement District No. 4 of the Kern County Water Agency
ILRP	Irrigated Lands Regulatory Program
ITRC	Irrigation Training and Research Center
KCWA	Kern County Water Agency
KDWD	Kern Delta Water District
KRGSA	Kern River Groundwater Sustainability Agency
Lamont PUD	Lamont Public Utility District
MCL	Maximum Contaminant Level
METRIC	Mapping evapotranspiration at high Resolution with Internalized Calibration
M&I	Municipal and Industrial
mg/L	milligrams per liter
ng/L	nanograms per liter
NOAA	National Oceanographic and Atmospheric Administration
NWKRCD	North West Kern Resource Conservation District
OMWC	Oildale Mutual Water Company
RWQCB	Regional Water Quality Control Board

SBVMWD	San Bernardino Valley Municipal Water District
SBX7-7	Steinberg Water Conservation Act of 2009
SCADA	Supervisory Control and Data Acquisition
SGMA	Sustainable Groundwater Management Act
SWP	State Water Project
TCP	1,2,3-Trichloropropane
TDS	Total Dissolved Solids
ug/L	micrograms per liter
UWMP	Urban Water Management Plan
WAP	Kern River Water Allocation Plan, Kern Delta Water District
WWTP	Wastewater Treatment Plant
WY	Water Year, October 1 through September 30

1 PLAN PREPARATION AND ADOPTION

The California Water Code requires that agricultural water suppliers providing water to 10,000 or more irrigated acres prepare and adopt an Agricultural Water Management Plan (AWMP) and submit that Plan to the California Department of Water Resources (DWR). The Plan is required to describe and evaluate water deliveries and uses, sources of supply, water quality, water delivery measurements, water rates and charges, water shortage allocation policies, drought management, and reasonable and practical efficient water management practices. Adoption of an AWMP and implementation of efficient water management practices (EWMPs) are required in order for the agricultural water supplier to be eligible for any State water loans or grants.

Kern Delta Water District (KDWD or District) has over 85,000 irrigated acres, and this AWMP has been prepared in accordance with the requirements of SBX7-7 (Water Conservation Act of 2009) and it follows the recommendations in *A Guidebook to Assist Agricultural Water Suppliers to Prepare a 2025 Agricultural Water Management Plan* (Guidebook) prepared by DWR.

AWMPs must be prepared every five years. KDWD last updated its AWMP in 2020 (Todd, 2020). This 2025 AWMP updates information in the 2020 AWMP and includes additional content requirements pursuant to all legislation including AB 1668 (Water Management Planning) and California Water Code §10820 (AWMP). These include:

- An annual water budget with specific components on a water-year basis,
- Identification of water management objectives based on the water budget to improve system efficiency or to meet other water management objectives,
- Quantification of water use efficiency using methods identified in *A Proposed Methodology for Quantifying the Efficiency of Agricultural Water Use* (DWR, 2012),
- Drought Plan with actions for drought preparedness, and
- Demonstration of reduced reliance on the Delta.

The structure and many of the tables from the 2020 AWMP have been retained and updated, where appropriate, for consistency and comparison purposes. However, the water use, supply, and budget tables have been revised from representative years to a five-year period extending from Water Year¹ (WY) 2020 to WY 2024.

1.1 PREVIOUS WATER MANAGEMENT ACTIVITIES

KDWD is located in the Kern County Groundwater Subbasin (Basin No. 5-022.14). The Kern County Subbasin is the largest subbasin in the State, has been designated as critically overdrafted, and is governed by a collaborative group of water districts, water storage districts, irrigation districts, and municipalities. These agencies manage a complex water supply system that includes a large portfolio of local and imported water sources and access to flood waters from throughout the State. These sources

¹ A Water Year (WY) is defined as October 1 through September 30. For example, WY 2015 extends from October 2014 through September 2015. The format of some of the DWR table headings has been retained in this report and Water Year 14/15 is the same as WY 2015.

are used not only for water supply within the Subbasin, but also for local managed aquifer recharge projects and numerous large water banking projects, which collectively provide both local and State-wide water supply and water quality benefits. To comply with the Sustainable Groundwater Management Act (SGMA), local agencies are organized into Groundwater Sustainability Agencies (GSAs) that coordinate to produce Groundwater Sustainability Plans (GSPs) covering the entire Subbasin. The GSP, adopted in August 2025, is currently under review with DWR. KDWD is part of the Kern River Groundwater Sustainability Agency (KRGSA) that manages groundwater in their local area and participates in the management of the groundwater basin.

KDWD actively manages a diverse portfolio of local surface water, imported water, and groundwater supplies. Its Water Allocation Plan (WAP) (Todd, 2011) was developed to optimize the use of Kern River water available to the District, provide operational flexibility, and maximize the beneficial use of its Kern River water rights. The District uses groundwater to supplement surface water supplies and rainfall. Its Groundwater Management Plan (GWMP) (Todd, 2013) summarizes local groundwater management and monitoring activities for conjunctive use of groundwater and surface water.

Annual reporting demonstrates implementation of the GSP and includes monitoring and management in accordance with the plan. In addition to these activities, the District also implements projects and management actions (PMAs) to improve water use efficiency. These Efficient Water Management Practices (EWMPs) are described in Section 7.

1.2 COORDINATION ACTIVITIES

KDWD is located on the south side of metropolitan Bakersfield in Kern County (**Figure 1**), covering portions of both the City and unincorporated County land. The District actively coordinates with the City on management of its Kern River diversions and conveyance. The District coordinates with the Kern County Water Agency (KCWA), which serves as the contracting entity with the DWR for the District's State Water Project (SWP) supply. The District also coordinates and collaborates regularly with others regarding local and regional water management. As a member agency of the KRGSA, KDWD coordinates with the City, ID4, and other GSA member agencies, to manage water supplies in the area to achieve groundwater sustainability. Additional coordination occurs with numerous other local agencies for groundwater banking programs, shared water conveyance facilities, local groundwater recharge, and water exchanges.

Table 1 summarizes the efforts KDWD has taken to involve appropriate agencies and the general public in the District's AWMP update process. The City, County, and interested Parties were notified that the AWMP would be revised. Notifications included location where the AWMP can be viewed, time and place of the public hearing, and contact information. Public notices were published before the public hearing in accordance with Government Code §6066. Copies of notifications and public notices are included in **Appendix B**.

A public hearing was held on March 17, 2026 for KDWD Board consideration of adoption of this Plan. A summary of notice is provided below.

- Notification was sent to City and County on intent to update KDWD AWMP on February 26, 2026,
- Notification was sent to Interested Parties (see **Table 1**) on intent to update KDWD AWMP on February 26, 2026,
- Notice in local newspaper on March 3, 2026 and March 10, 2026 of Public Hearing to adopt the 2025 AWMP (per Gov. Code §6066),
- Posted Draft AWMP on District’s website (www.kerndelta.org) and a hard copy was available at District offices on March 6, 2026, and
- Electronic version of the Draft Plan was submitted to entities that requested such drafts (see **Table 1**).

Table 1. Summary of Coordination, Adoption, and Submittal Activities

Potential Interested Parties	Notified of AWMP	Notified of Public Meetings	Sent Copy or Notified of Adopted AWMP Availability
City of Bakersfield	2/26/2026	2/26/2026	Before April 15, 2026
Kern County	2/26/2026	2/26/2026	Before April 15, 2026
Kern River GSA	2/26/2026	2/26/2026	Before April 15, 2026
Kern Groundwater Authority GSA	2/26/2026	2/26/2026	Before April 15, 2026
Kern County Water Agency	2/26/2026	2/26/2026	Before April 15, 2026
Arvin-Edison Water Storage District	2/26/2026	2/26/2026	Before April 15, 2026
Wheeler Ridge-Maricopa Water Storage District	2/26/2026	2/26/2026	Before April 15, 2026
Henry Miller Water District	2/26/2026	2/26/2026	Before April 15, 2026
Lamont PUD	2/26/2026	2/26/2026	Before April 15, 2026
Greenfield CWD	2/26/2026	2/26/2026	Before April 15, 2026
California Water Service Company	2/26/2026	2/26/2026	Before April 15, 2026
DWR			Before April 15, 2026
Bakersfield Californian		3/3/26 and 3/10/26	
California State Library			Before April 15, 2026

1.3 AWMP ADOPTION, SUBMITTAL AND AVAILABILITY

The 2025 AWMPs must be adopted by April 1, 2026 and submitted to DWR within 30 days of adoption. The KDWD 2025 AWMP was adopted by the District Board at a public hearing conducted at a regular meeting of the Board of Directors on March 17, 2026. The Board unanimously voted to consider and

incorporate comments received prior to and at the March 17 public hearing. A copy of the resolution adopting the AWMP is included in **Appendix C**.

The District posted a Final version of the 2025 AWMP on its website and made available to the appropriate entities per California Water Code §10843 (see **Table 1**) no later than April 15, 2026, which is within 30 days of adoption by the District.

1.4 AWMP IMPLEMENTATION SCHEDULE

Following adoption, the 2025 AWMP will be in effect for five years; the next AWMP update will occur in early 2031. The 2025 AWMP provides details on its EWMPs along with an implementation schedule in Section 7 of this Plan.

1.5 AWMP CHECKLIST

Appendix A contains a multipage checklist provided in the Draft AWMP Guidebook developed from the California Water Code requirements for plan content and plan preparation and adoption. Completion of this table supports preparation of the AWMP and provides DWR and the public with the AWMP sections where required elements can be found.

2 DESCRIPTION OF KDWD AND SERVICE AREA

2.1 BACKGROUND AND PHYSICAL CHARACTERISTICS

For more than 130 years, canal systems running from the Kern River through the KDWD boundary have delivered water to support the agricultural economy on lands south of the Kern River. These systems were first developed as separate canal companies, each with its own Kern River water right and defined service area, which were later consolidated. KDWD was formed in 1965 to contract SWP supply from KCWA and to preserve the service areas' existing water rights. Facilities and Kern River water rights were subsequently acquired by the District in 1976. KDWD continues to be a public entity that secures and manages a diverse portfolio of water supplies conjunctively to benefit water users. to the Kern River. Facilities and Kern River water rights were subsequently acquired by the District in 1976.

The District's contract with KCWA for SWP water was executed in 1972. In addition to its Kern River and SWP supplies, the District has made occasional purchases of water from the Central Valley Project (CVP) through deliveries to the Kern River or the Arvin Edison Water Storage District's Intake Canal from the Friant-Kern Canal. Irrigation deliveries to lands within the District are also made with wastewater plant treated effluent, although not through District facilities. Irrigation demands in excess of the District surface water supplies are met through groundwater pumping.

2.1.1 Size and Location of Service Area

KDWD is located in the southern portion of the San Joaquin Valley south of the Kern River. It lies within the Kern County Groundwater Subbasin (5-22.14) as defined by DWR (**Figure 1**). **Figure 2** shows water districts in the vicinity of KDWD and **Figure 3** shows municipal water suppliers that overlap or adjacent to KDWD. The KDWD boundary covers approximately 129,000 acres, about 105,000 of which are irrigated agriculture. Of that amount, about 85,000 acres are planted and about 20,000 acres are fallowed each year. Municipal and industrial (M&I) development in the District is estimated to cover approximately 15,000 acres. The District's water supply sources, size and formation date are summarized in **Table 2**. The District does not expect changes to the size of its service area.

Table 2. Water Supplier Information

Description	Summary
Date of District Formation	December 1965
Source of Water	
Local Surface Water (Kern River)	✓
Local Groundwater	✓
Recycled Water	✓
Wholesaler	
USBR CVP water (when available)	✓
SWP	✓
Service Area Gross Acreage	128,960
Service Area Developed as Irrigated Agricultural Acreage	107,600
Service Area Irrigated Acreage (2025)²	84,562

1. Landowners within the District held Kern River water rights as early as the late 1800's.
2. Acreage does not include idle agricultural land

Approximately 89,210 of the District’s acres are within the utility service areas of five canal systems (Kern Island, Buena Vista, Stine, Farmers, and Eastside) and about 35,620 acres are classified as non-utility areas. The remaining lands are major rights of way for State and County roads and canals. The District and canal service area boundaries are shown on **Figure 4**. As indicated on the map, the canal service area boundaries extend outside District boundaries.

2.1.2 Water Management Facilities

The District’s water management facilities including canals, laterals, groundwater recharge basins, and District owned wells are shown on **Figure 4**. Brief descriptions of the facilities are included below.

Water Conveyance and Delivery System

The District’s gravity water conveyance and delivery system consists primarily of unlined canals and laterals located within the utility service areas. Short reaches of canals and laterals within the urban area have been lined with concrete or enclosed in pipes. The total length of canals and laterals is approximately 142 miles (see **Table 3**). Most of the District canals remain unlined to preserve the groundwater benefits associated with operational recharge. The District does not operate any agricultural drains.

The District’s main canals, from west to east, are the Buena Vista Canal, Stine Canal, Farmers Canal, Kern Island Canal (including the main canal, and the Central and East Branch), and the Eastside Canal. These canals are connected to regional facilities operated by others (the Kern River Canal, Carrier Canal, and the Arvin-Edison Intake Canal), which allow the various surface water supplies to be diverted into the District.

Table 3. Water Conveyance and Delivery System

Conveyance System	Number of Miles
Unlined Canal	127
Lined Canal	4
Pipelines	11
Drains	0
Total	142

Groundwater Recharge Basins

The District operates groundwater banking facilities for use by the District as well as banking partners, including Metropolitan Water District of Southern California (Metropolitan) and San Bernardino Valley Municipal Water District (SBVMWD). KDWD facilities include close to 1200 acres of existing recharge basins (see **Figure 4** and **Table 4**). KDWD strategically adds to its banking capacity from time to time. The Metropolitan banking agreement allows it to store up to 50,000 acre-feet per year (AFY) beneath KDWD with a maximum storage amount of 250,000 acre-feet (AF). The SBVMWD agreement allows for a one-time delivery of 30,000 AF with a maximum recovery of 5,000 AFY (about 2,900 AF remains in the account). An 11 percent conveyance loss is retained by KDWD in both agreements. Since the program began in 2003, KDWD has stored approximately 367,00 AF for return to banking partners. Return of banked water to KDWD banking partners occurs through groundwater pumping, exchange of surface supplies or direct conveyance to the California Aqueduct (Aqueduct). These return or exchange amounts are not included in the tables in this AWMP since the return is through surface water (Kern River or SWP) before the surface water supply enters the District. Of the 367,000 AF recharged on behalf of partners, approximately 144,000 AF remain stored in the groundwater aquifer.

Table 4. Groundwater Recharge Basins

Recharge Basin	Service Area	Size (acres)	Operational Recharge Rate		Average Annual Recharge Capacity (AF)
			(cfs)		
			Summer	Winter	
Current Recharge Capacities					
Buena Vista	Buena Vista	240	55	20	27,000
Buena Vista Pit	Buena Vista	65	25	15	14,000
Stine (Bladder & Triangles)	Stine	40	20	10	11,000
Old River	Stine	145	30	TBD	TBD
Romero	Farmers	170	40	15	20,000
Stonefield	Stine	80	15	10	9,000
Kern Island	Kern Island	175	25	20	16,000
Digiorgio (Howard Frick)	Eastside	70	15	10	9,000
Branch 1	Kern Island	75	18	5	8,000
Sunset¹	Eastside	140	TBD	TBD	TBD
Church	Farmers	5	1	1	0
Total		1200		-	114,000

1. Sunset Recharge Basins is a joint project with Arvin Edison Water Storage District. The total size of the basins will be 150 acres with 75 acres available for KDWD use.

Isabella Reservoir Rights

The District has storage rights in the Isabella Reservoir. The storage rights vary from month to month based on a rule curve. The maximum storage limits and the end of year carryover limits for each service area are shown in **Table 5**. KDWD can also use a portion of Buena Vista Water Storage District’s (BVWSD) storage space per the terms of the SWP exchange agreement with BVWSD (maximum carryover of 6,000 AF).

Table 5. KDWD Isabella Reservoir Storage Rights

Service Area	Maximum Storage (AF)	Carryover (AF)
Kern Island	18,000	2,500
Buena Vista	11,000	1,500
Stine	9,000	1,500
Farmers	6,000	1,500
Total	44,000	7,000

Source: KDWD Supplemental Water Supply Study, 2000

District Owned Wells

KDWD owns 18 wells for recovering banked groundwater as a part of its banking program with Metropolitan. The wells are located adjacent to recharge basins in the Kern Island and Buena Vista service areas and near the Arvin-Edison Canal (operated by the Arvin-Edison Water Storage District (AEWSD)) in the northern portion of the District. Individual well capacities range from about 1,800 gallons per minute (gpm) to 4,500 gpm. The total annual recovery capacity of the wells is estimated to be 94,000 AFY. During Water Years 2020-2024, the district wells have only been used to recover and export stored groundwater, via exchange, and not to deliver additional supply to agricultural users.

These wells are used almost exclusively for the banking program. Return of banked water to KDWD banking partners occurs through exchange of surface supplies or direct conveyance to the Aqueduct. For example, Kern River water supply is delivered to the ID4 treatment plant and ID4 delivers a like amount to the California Aqueduct for delivery to District banking partners. The District then pumps a like amount from its wells and delivers that water to its growers in-lieu of surface water supplies.

Tailwater/Spill Recovery Systems

The District does not operate any tailwater/spill recovery systems, however individual growers may operate their own systems; this water is not allowed back into District canals or facilities.

2.1.3 Service Area Terrain and Soils

KDWD is near the southern end of the San Joaquin Valley, with the Sierra Nevada Mountains to the east, the Tehachapi Mountains to the south, and the Temblor Range to the west. Elevations in the District slope gently from a maximum elevation of approximately 415 feet in the northeast to a minimum of 285 feet in the southwest. The topography allows for gravity operation of the District's canals and laterals. The District has allowed storm water drainage facilities operated by the City of Bakersfield and County of Kern to connect to the District's canal facilities in a number of locations. It is estimated that the quantity of storm water entering the District's canal facilities averages about 800 AFY.

The depositional history of the Kern River has influenced the shallow subsurface sediments and soil profile beneath the District. The terminus of the Kern River was historically at large inland lakes. The ancestral Kern River flowed from east to west across the valley and then turned north toward the Tulare Lake Bed approximately 40 miles away. During flood stage in the main east-west channel, flow spilled to the south through KDWD and into Kern Lake, in the southern region of the District, and pre-historic Buena Vista Lake (which covered a much larger area than the modern Buena Vista Lake), west of the District. These two now-dry lakebeds received thick deposits of fine-grained sediments as flood flows diminished and dropped their bed load. Since the regulation of River flows with the construction of Isabella Dam in the early 1950s, the lakebeds no longer receive flood waters and have been converted to agriculture.

These depositional patterns have resulted in thick sequences of coarse-grain sediments (sand) in the northern and central portions of the District and fine-grained deposits (silt and clay) in the paleo-lakebeds in the south, as indicated on the soil texture map on **Figure 5**. This soil texture map is from the Soil Survey Geographic (NRCS, 2018) database for Kern County, developed by the U.S. Department of Agriculture, Natural Resources Conservation Service. Soil textures are color-coded and listed in the legend by decreasing grain size (texture). Loamy sands, sandy loams, and fine sandy loams, shown by shades of yellow and light orange, are the dominant soil textures in the area. Loams to clay, shown in

dark orange, green, brown, and dark red, are the primary soil textures along the southern boundary of KDWD. An additional north-south band of fine grain textures is present in the eastern portion of KDWD.

Figure 5 also illustrates the canals and recharge basins in the District. The recharge basins are operated by KDWD and are located primarily in areas of coarse-grained, permeable soils (loamy sands to fine sandy loams).

2.1.4 Climate

The climate of the area is characterized by hot, dry summers and cool, moist winters. The mean annual temperature is 65° F and summer highs frequently exceed 100° F. On average, about 70 percent of the precipitation occurs in December through March. **Table 6** provides average monthly climate information. The long-term average precipitation at the Bakersfield Meadows Field Airport station (located north of KDWD) is approximately 6 inches per year (NOAA, 2019). Annual precipitation – displayed by Water Year (WY) – is shown on **Figure 6**, covering a 54-year period from WY 1966 – WY 2019. As shown on the figure, annual precipitation is highly variable, ranging from 2.26 inches in WY 2008 to 14.99 inches in WY 1998. Average annual precipitation during the period is 6.13 inches. **Figure 6** shows that the wettest water years are associated with precipitation totals above 10 inches per year; using this definition, wet years occurred in WYs 1978, 1983, 1995, 1998, 2011, and 2023. The driest water years, with precipitation less than 4 inches per year, occurred in WYs 1970, 1972, 1984, 1990, 2002, 2007-2008, 2013-2014, 2018, and 2021-2022.

Evapotranspiration (ET) is the process by which water is transferred from the land to the atmosphere by evaporation from the soil and other surfaces and by transpiration from plants. The area is characterized by relatively high rates of ET. Reference evapotranspiration (ET_o) averages about 62.3 inches per year (**Table 6**). Monthly averages range from an ET_o of 1.8 inches in December to 9.39 inches in June (CIMIS, 2026). These rates indicate that much of the local precipitation would be evaporated (or transpired by local vegetation), with relatively small amounts contributing to deep percolation and recharge. However, most of the precipitation and runoff in the area is actively managed to maximize recharge. The City of Bakersfield, which overlaps a portion of the KDWD, maintains almost 400 small stormwater retention facilities (referred to as sumps) that are all open-bottomed and are managed for recharge of urban runoff (Carollo Engineers, 2015). Collectively, these small basins cover more than 500 acres and are sited throughout the entire Metropolitan Bakersfield area. Almost all of these facilities reside on relatively permeable soils and underlying sediments and capture about 16,000 AFY of stormwater runoff, on average. Additional recharge of precipitation is accomplished by diversion and management of runoff into unlined canals and larger recharge/banking facilities.

Table 6. Average Monthly Climate Information

Month	Average Precipitation ¹ inches	Average Reference Evapotranspiration (E _{t0}) ² inches	Average Minimum Temperature ³ °F	Average Maximum Temperature ³ °F
January	1.04	1.61	38.9	58.0
February	1.11	2.46	42.1	64.0
March	1.13	4.11	45.7	69.3
April	0.65	5.73	50.2	76.1
May	0.22	7.73	57.0	84.3
June	0.07	8.81	63.9	92.5
July	0.01	9.25	69.9	98.9
August	0.04	8.58	68.3	97.0
September	0.09	6.25	63.6	91.2
October	0.29	4.23	54.4	80.7
November	0.60	2.18	44.4	67.5
December	0.89	1.35	38.8	58.1
Annual Total or Average	6.15	62.29	53.1	78.1

1. Precipitation at Bakersfield WSO ARPT station #40442, 1938-2025 (WRCC, 2026)

2. E_{t0} at Arvin-Edison Station #125 from 3/22/1995 to present (CIMIS, 2026)

3. Temperature at Bakersfield WSO ARPT station #40442, 10/01/1937 to 12/31/2025 (WRCC, 2026)

2.2 OPERATIONAL INFORMATION

2.2.1 Operating Rules and Regulations

The District last updated its “Rules and Regulations for the Sale and Distribution of Water” on April 21, 2015 (**Appendix D**). These rules require at least 24-hour notice for requested water delivery or shutoff. A grace period for water overruns of up to four hours is included. Information on the operation of the District’s delivery system and lead times is presented in **Table 7**.

KDWD water supply consists of groundwater (including banked surface water), Kern River water, and SWP water. The text below provides information on the operation and regulations of these water supplies. Additional information regarding the management of District supplies during drought is included in its Drought Plan in **Appendix E**.

The District may shut off deliveries or refuse to make deliveries if private facilities are not reasonably maintained.

Table 7. Supplier Delivery System and Actual Lead Times

Supplier Delivery System		
Type	Check if Used	Percent of System Supplied
Arranged Demand	✓ (24-hr notice)	100 Percent
Rotation	✓	Only during shortages
Actual Lead Times		
Operations	Hours/Days	
Water Orders	24 hours / 1 day	
Water Shut-Off	24 hours / 1 Day	
Grace Period (Water Shut-Off)	4 Hours	

Source: KDWD “Rules and Regulations for the Sale and Distribution of Water”

Kern River Water

Kern River Utility Water may be prorated during times of shortage based on: (1) anticipated total deliverable water to specific areas within the District Service Areas, (2) total acres within those Areas, (3) acres owned or operated by each customer within those Areas, and (4) any other equitable factors deemed necessary and appropriate by the District (KDWD 2015 Rules and Regulations). During periods of severe water shortage, the District may deliver Utility Water on a rotational basis. The rotation may cause growers to go several days or weeks between deliveries.

The District’s WAP (Todd, 2011) prioritizes Kern River water use as follows:

1. Irrigation deliveries within each Service Area
2. Irrigation deliveries within the District
3. Municipal and industrial use
4. In-District groundwater recharge
5. Pioneer Project groundwater recharge
6. Other uses (including meeting additional surface demands, groundwater recharge, and transfers to out-of-district agencies).

Imported SWP Water

Allocation of the District’s SWP supplies is governed by Resolution No. 2009-05 and the “2nd Amendment to the 1974 Plan for Water Allocation and Procedure for Setting State Water Tolls” according to the following process:

1. The Board of Directors shall have the option to sell up to 2,000 acre-feet/year of Kern Delta’s State Water Project (SWP) contractual water supply out-of-district but within Kern County.
2. The annual SWP contractual water supply, less any water sold out-of-district pursuant to Paragraph 1, shall be allocated as follows:

- a) 12,500/30,000 to Eastside Utility lands and Eastside Area Non-Utility lands capable of receiving service from the Eastside Canal or the Central Branch of the Kern Island Canal.
 - b) 17,500/30,000 to Stine, Farmers, and Buena Vista Utility lands and Non-Utility lands lying west of the Kern Island Central Canal that are capable of receiving service.
3. Specific allocations to individual service areas shall be determined based on the following guidelines:
- a) 20% of the amounts allocated to the Eastside and Westside Areas shall be reserved to cover operational recharge within the District’s canals. The remaining 80% of the Eastside and Westside Area supplies shall be allocated to individual District consumers.
 - b) Water will be allocated to Eastside Area consumers (utility and non-utility) on an equal acre-foot per acre basis.
 - c) The Westside Area supply shall be allocated to Stine, Farmers, and Buena Vista Utility consumers and Westside Non-Utility consumers, i.e., located west of Highway 99, capable of receiving service in amounts such that the total water deliveries to each area (based on projected long term average Utility Water deliveries and available SWP supply for that year) shall be equal in terms of acre-feet per acre.

Groundwater

Landowners in the District pump groundwater to cover shortages in surface water supplies. The District may shut off deliveries or refuse to make deliveries if private facilities are not reasonably maintained.

The District’s conjunctive use program operations have been developed to maximize its surface water supplies in order to maintain sustainable groundwater quality and quantity and preserve groundwater supplies for drought conditions. In its GWMP, the District identifies its Groundwater Basin Management Measures to protect and sustain its groundwater and surface water supplies.

Table 8 summarizes the general basis for the District’s Water Allocation Policy.

Table 8. Water Allocation Policy Basis

Basis of Water Allocation	<i>(Check if applicable)</i>			Allocation	
	Flow	Volume	Seasonal Allocations	Normal Year	Percent of Water Deliveries (%)
Area within the service area		✓		✓	100
Amount of land owned		✓		✓	100
Seepage Losses		✓		✓	20 ¹
Other (Out-of-District)		✓		✓	2,000 AF max ²

Source: KDWD “Rules and Regulations for the Sale and Distribution of Water”
 KDWD “Proposed Second Amendment to 1974 Plan for Water Allocation”

- 1. Percentage of SWP supply reserved to cover canal seepage loss.
- 2. Option to sell up to 2,000 AFY of SWP supply out-of-District within Kern County

2.2.2 Water Delivery Measurements/Calculations

Water delivery measurements are made as described in the KDWD Water Deliveries Report, July 2017 (included as **Appendix E**). KDWD utilizes two types of measurement devices: overpour weirs and meters (manual and automated). The measurement devices are read and reported daily by District staff.

Weirs used by the District for water measurement are constructed and maintained to conform to the requirements of fixed-blade, thin-walled rectangular weirs, as defined in the “Water Measurement Manual” published by the United States Department of the Interior, Bureau of Reclamation, in order to provide accurate measurements. The method of measurement has also been standardized by the District to eliminate potential sources of error. Measurements are taken at a distance between four and six times the head above the weir at approximately the center of the canal’s flow path.

Waterman Type C-10 canal gates are a primary source of measurement and are used throughout the District at both major diversions and at individual farmer turnouts and delivery points. Farmer turnouts have pipe risers or stilling wells installed behind the headwall. Water delivery measurements at these locations are based on differential head readings, gate opening height, and gate size. Propeller meters are used in pipelines flowing full.

The District periodically reviews the condition of its measurement devices as a part of its routine maintenance program. **Table 9** provides information on the frequency of calibration and maintenance of the District’s measurement devices along with typical levels of accuracy. Supervisory Control and Data Acquisition (SCADA) measurement devices have been installed at the headworks of main canals by the City of Bakersfield.

The District also expanded upon this system in several key downstream locations on several canals. This provides continuously updated data collection at key locations in the District.

Table 9. Water Delivery Measurements

Measurement Device	Frequency of Calibration (Months)	Frequency of Maintenance (Months)	Estimated Level of Accuracy (%)
Orifices (meter gates)	As needed	As needed	+/- 5 to 10%
Propeller Meters	Per Mfr. Rec.	Per Mfr. Rec.	+/- 2%
Weirs	As needed	As needed	+/- 5 to 10%

Source: KDWD Water Deliveries Report, July 2017 and KDWD 2015 AWMP

2.2.3 Water Rate Schedules and Billing

KDWD charges a combination of annual assessments on a per acre basis and a water rate per acre foot of deliveries. The assessment charges vary based on District Service Area and development type. Water rates are different for Utility Water and SWP supplies. Rates for SWP supplies also vary by District Service Area. Water rates are billed monthly per the District’s Rules and Regulations (**Appendix D**). The water rates are uniform and do not vary with the quantity of water used.

The District’s assessment charges and water rates for 2026 are summarized in **Table 10**.

Table 10. 2026 Water Rate Basis

Water Charge Basis	Check if Used	Percent of Water Deliveries (%)	Description
Volume of Water Delivered	✓	100	Rates vary based upon water type and District Service Area. See below:
		Service Area	Rate (per acre-feet)
		KDWD Utility Water	\$24.00/ac-ft
		Eastside SWP Water	\$116.00/ac-ft
		Kern Island East of 99 SWP Water	\$88.00/ac-ft
		Kern Island West of HWY 99 SWP Water	\$90.00/ac-ft
		Stine and Farmers SWP Water	\$87.00/ac-ft
		Buena Vista SWP Water	\$84.00/ac-ft
Land Assessment	✓	100	Rates vary based upon District Service Area and development type. See below:
		Service Area	Rate (per acre)
		Annual Assessment Admin. Charge	\$4.34
		Eastside Assessment Charge	\$2.97
		Farmers Assessment Charge	\$4.67
		Stine Assessment Charge	\$5.48
		Buena Vista Assessment Charge	\$5.21
		Kern Island Assessment Charge	\$2.21
		South Fork Assessment Charge	\$0.85
		City Sewer Plant Assessment Charge	\$0.85
		Remaining Irrigated Land Assessment Charge	\$6.31
		Undeveloped Lands Assessment Charge	\$0.85
		Commercial / Residential Assessment Charge	\$6.31
Equalization (Standby)	✓	100	Rates vary based upon District Service Area. See below:
		Service Area	Rate (per acre)
		Eastside Equalization Charge	\$7.31
		Buena Vista Equalization Charge	\$9.55
		Kern Island Equalization Charge	\$6.55

Note: Rates are subject to change.

2.2.4 Water Shortage Allocation Policies and Drought Plan

The District's Drought Plan is included as **Appendix E**. The Drought Plan includes the District's water shortage allocation policies, information on drought vulnerability, and drought responses. The foundation of KDWD's Drought Plan consists of optimizing conjunctive management, groundwater banking, and best use of additional source water (such as recycled water) as available. In brief, District landowners are incentivized to rely on surface water resources when available to preserve groundwater resources for use in drought conditions. Groundwater banking consists of numerous strategies including intentional recharge along unlined canals, in-District banking for out-of-basin participants, and out-of-District banking for both recovery and overdraft protection. In addition, the District incorporates out-of-basin storage in Isabella Reservoir. Finally, the District is active in optimization of all local water sources obtained through cooperative transfers, exchanges, and agreements with other water districts and even shared recharge facilities. Additional details of these policies and strategies of the Drought Plan are provided in **Appendix E**.

3 DESCRIPTION OF QUANTITY OF WATER USES

Water use within the KDWD service area varies from year to year and is dependent upon precipitation, cropping patterns, fallowed acreage, and available surface water supplies. This section describes water use during the previous five water years (WY 2020 to WY 2024).

3.1 BASIS FOR REPORTING WATER QUANTITIES

Analysis of water use during the previous five water years is required for the annual budget (Section 5). This time period, extending from WY 2020 to WY 2024, was also selected to be representative of District water uses. It represents current uses of water on District land and includes both dry and wet years. Normal, wet, and dry conditions are determined by Kern River Indices which compare annual year river flows to long term average flows by calendar year (**Figure 7**) and by rainfall which is summarized by water year on **Figure 6**. Although Kern River indices are based on calendar year, they provide an indication of the amount of Kern River water available to the District in any given water year. Over the WY 2020 to WY 2024 time period, rainfall averaged 6.71 inches per year and between calendar years 2020 and 2024, the average of the Kern River Indices was 105.4 percent. The year types are described below for 2020-2024, water use information in this section is provided on a water year basis for the overall water budget unless indicated otherwise.

- WY 2020 was a dry year with the Kern River Index at 55 percent and rainfall at 7.2 inches.
- WY 2021 was a critically dry year with the Kern River Index at 22 percent and rainfall at 2.77 inches.
- WY 2022 was a dry year with the Kern River Index at 29 percent and rainfall at 5.41 inches.
- WY 2023 was a wet year with the Kern River Index at 320 percent and rainfall at 11.34 inches.
- WY 2024 was an average year with the Kern River Index at 101 percent and rainfall at 6.83 inches.

3.2 AGRICULTURAL WATER USE

Annual agricultural water use by source within the District is shown in **Table 11** for WY 2020 to WY 2024. Sources of water include SWP water, Kern River water, recycled water, and groundwater.

SWP and Kern River water delivery and use information are from the Kern River Hydrographic Annual Reports published by City of Bakersfield Water Resources Department (COB, 2020-2024). In-lieu deliveries of surface water through the Metropolitan Water District of Southern California (Metropolitan) banking program provide customers with surface water in-lieu of pumping groundwater.

Treated effluent from the City of Bakersfield's Wastewater Treatment Plants #2 and #3 is used for irrigation on land within KDWD. The total volume of reclaimed water used ranged between 4,000 and 8,000 AFY. Effective precipitation is the amount of precipitation that is used by the crops and satisfies a portion of the applied water demand. These values are estimated from an integrated surface water-groundwater model C2VSimFG-Kern, which was developed to support the Subbasin GSP process and was updated for the Kern County Subbasin GSP Annual Report (Todd, 2024a).

The Kern County Subbasin GSP model was developed from the C2VSim Fine Grid Public Beta model released by DWR. This Central Valley regional model includes historical input data for WY 1922-2025,

including crop type based on DWR and Kern County crop maps. The C2VSimFG-Kern model incorporated Subbasin-specific data and information into the regional model to provide a Kern County Subbasin-specific local model. The model continues to be updated for the Kern Subbasin Annual Report.

C2VSim dynamically calculates agricultural crop water demands and allocates supplies to meet these demands for each model element. Agricultural demands are calculated for 20 crops using historical crop acreage data and crop evapotranspiration (ETc) rates. Crop water demands in each model element are first met with stored soil moisture, precipitation, surface water deliveries, and specified groundwater deliveries. If the agricultural demands are not satisfied, the model can optionally calculate the additional groundwater pumping required to satisfy the unmet demands and extract that water from the groundwater component of the model element. Monthly ETc rates for three model subregions (northeast, northwest, and south) in Kern County were calculated for 1993-2023 using monthly remote sensing imagery and detailed annual crop maps by the ITRC (ITRC, 2017). ET data for WY2023 and WY 2024 are provided by Land IQ under the Kern Subbasin’s SGMA GSP Implementation Round 1 Grant following the same process used for the ITRC METRIC data. More information about the model, crop demand, and simulation of groundwater pumping can be found in the Kern Subbasin GSP (Kern 2025) and Annual Reports (Todd 2023-2025).

Table 11. Annual Agricultural Water Use (AF)

Source	Water Year 2020	Water Year 2021	Water Year 2022	Water Year 2023	Water Year 2024
Agricultural Water Supplier Delivered					
Surface Water (SWP) ¹	5,730	3,827	-	4,492	10,927
Surface Water (Kern River) ²	97,438	74,360	72,228	123,530	133,792
Surface Water (Lower Kern River) ²	-	-	-	1,372	-
Surface Water (In-lieu Deliveries) ³	728	-	-	18,342	-
Reclaimed Water⁴					
City of Bakersfield WWTP #2	2,988	4,910	2,988	2,988	2,988
City of Bakersfield WWTP #3 ⁵	1,210	3,672	3,225	3,175	2,735
Other Water Supplies Used					
Groundwater-District Wells ⁶	0	0	0	0	0
Effective Precipitation ⁷	60,478	21,747	35,409	80,488	54,666
Groundwater-Private Wells	110,341	184,530	166,411	108,604	133,322
Total	278,913	293,046	280,261	342,991	338,430

1. Provided by KDWD, only water delivered to customers, does not include conveyance loss or recharge
1. Provided by KDWD, only water delivered to customers, does not include conveyance loss or recharge
3. In lieu deliveries from KDWD
4. Provided by City of Bakersfield, Applied Water to ag area near WWTP2, assumes 50 % of applied water in KDWD
5. Provided by City of Bakersfield, Applied Water to ag area near I-5, 25 percent of the area is assumed to be in KDWD
6. Provided by KDWD
7. From Kern C2VSim Model

Agricultural acreages and cropping patterns were estimated for each of the preceding five years for parcels across the District. Crop type, associated acreage, and crop ET data are tabulated in **Tables 12** through **16** for 2020 through 2024, respectively. Also included on each table are the estimated applied irrigation water demands for each crop type. Data are presented on a calendar year basis to align with the available data sources. **Figure 8** illustrates the 2024 cropping patterns across KDWD, from the Kern Basin Study (Todd, 2025) based on data from Land IQ.

Table 12. Agricultural Crop Data for 2020

Crop	Total Acreage ¹	Crop ET ² (AF/Ac)	Applied Water Demand ³ (AF/Ac)	Total Crop Consumptive Use (AF)	Total Applied Water ³ (AF)
Almonds & Pistachios	24,619	2.74	3.38	67,443	83,246
Carrot/Cabbage	617	1.95	2.55	1,204	1,576
Citrus & Subtropical	541	2.12	2.34	1,149	1,266
Corn	18,977	2.75	3.67	52,124	69,723
Cotton	1,776	3.07	3.37	5,447	5,984
Grain	2,354	1.85	3.98	4,347	9,373
Onions & Garlic	619	1.73	6.42	1,070	3,973
Other Deciduous	5,278	1.74	2.57	9,190	13,571
Other Field	386	1.72	2.05	664	792
Other Truck	1,964	1.82	2.56	3,566	5,017
Pasture/Alfalfa	14,218	3.05	3.97	43,390	56,388
Potatoes	4,683	2.42	3.65	11,337	17,103
Tomato-Fresh	884	2.16	3.27	1,910	2,892
Turf	1,336	1.55	2.56	2,069	3,420
Vineyards	5,108	2.78	3.64	14,195	18,572
Total	83,362			219,104	292,898

1. Based on Land IQ crop acreages

2. Based on Kern Subbasin C2VSim Model

3. Based on Kern Subbasin C2VSim Model, includes precip, pumping, surface water deliveries

Table 13. Agricultural Crop Data for 2021

Crop	Total Acreage¹	Crop ET² (AF/Ac)	Applied Water Demand³ (AF/Ac)	Total Crop Consumptive Use (AF)	Total Applied Water³ (AF)
Almonds & Pistachios	26,922	3.06	3.53	82,442	95,127
Carrot/Cabbage	1,028	2.17	3.37	2,230	3,462
Citrus & Subtropical	541	3.92	4.25	2,123	2,302
Corn	20,414	3.11	4.08	63,541	83,221
Cotton	1,473	2.81	2.92	4,136	4,304
Grain	4,834	1.75	2.80	8,440	13,558
Onions & Garlic	1,389	2.16	2.65	2,995	3,678
Other Deciduous	3,002	2.03	2.60	6,105	7,804
Other Field	-	-	-	-	-
Other Truck	1,559	2.26	2.80	3,526	4,370
Pasture	12,560	3.31	3.99	41,637	50,139
Potatoes	4,442	2.22	3.11	9,872	13,806
Tomato-Fresh	1,045	2.07	2.35	2,166	2,459
Turf	2,238	1.28	1.94	2,876	4,340
Vineyards	4,519	2.93	3.49	13,233	15,753
Total	85,967			245,322	304,322

1. Based on Land IQ crop acreages

2. Based on Kern Subbasin C2VSim Model

3. Based on Kern Subbasin C2VSim Model, includes precip, pumping, surface water deliveries

Table 14. Agricultural Crop Data for 2022

Crop	Total Acreage¹	Crop ET² (AF/Ac)	Applied Water Demand³ (AF/Ac)	Total Crop Consumptive Use (AF)	Total Applied Water³ (AF)
Almonds & Pistachios	29,172	3.27	3.76	95,389	109,681
Carrot/Cabbage	403	2.34	3.40	942	1,370
Citrus & Subtropical	879	3.37	3.78	2,964	3,322
Corn	21,126	3.00	3.57	63,291	75,340
Cotton	386	3.13	3.41	1,207	1,313
Grain	3,624	1.93	2.89	7,000	10,474
Onions & Garlic	1,029	2.17	3.04	2,234	3,127
Other Deciduous	3,610	1.50	2.24	5,424	8,103
Other Field	-	-	-	-	-
Other Truck	487	2.24	2.95	1,089	1,434
Pasture	9,708	3.37	3.93	32,687	38,153
Potatoes	5,039	2.53	3.42	12,740	17,246
Tomato-Fresh	1,883	2.42	2.78	4,564	5,233
Turf	2,485	2.37	3.42	5,896	8,487
Vineyards	4,440	3.12	3.75	13,853	16,658
Total	84,269			249,280	299,941

1. Based on Land IQ crop acreages

2. Based on Kern Subbasin C2VSim Model

3. Based on Kern Subbasin C2VSim Model, includes precip, pumping, surface water deliveries

Table 15. Agricultural Crop Data for 2023

Crop	Total Acreage¹	Crop ET² (AF/Ac)	Applied Water Demand³ (AF/Ac)	Total Crop Consumptive Use (AF)	Total Applied Water³ (AF)
Almonds & Pistachios	31,845	3.22	4.10	102,443	130,624
Carrot/Cabbage	389	2.04	4.53	794	1,764
Citrus & Subtropical	1,033	2.68	3.26	2,766	3,364
Corn	21,754	2.88	3.74	62,699	81,269
Cotton	966	3.00	3.36	2,898	3,250
Grain	2,688	1.65	3.63	4,435	9,757
Onions & Garlic	525	1.87	3.02	984	1,589
Other Deciduous	1,625	1.87	3.32	3,038	5,394
Other Field	-	-	-	-	-
Other Truck	876	2.28	4.43	1,995	3,880
Pasture	12,069	3.34	4.39	40,256	52,947
Potatoes	4,401	2.18	3.81	9,603	16,750
Tomato-Fresh	3,520	2.51	3.31	8,835	11,637
Turf	1,121	1.95	2.95	2,187	3,312
Vineyards	4,333	2.95	3.83	12,762	16,589
Total	87,146			255,696	342,125

1. Based on Land IQ crop acreages

2. Based on Kern Subbasin C2VSim Model

3. Based on Kern Subbasin C2VSim Model, includes precip, pumping, surface water deliveries

Table 16. Agricultural Crop Data for 2024

Crop	Total Acreage¹	Crop ET² (AF/Ac)	Applied Water Demand³ (AF/Ac)	Total Crop Consumptive Use (AF)	Total Applied Water³ (AF)
Almonds & Pistachios ⁶	32,760	3.71	4.30	121,465	140,736
Carrot/Cabbage	768	2.41	3.11	1,853	2,387
Citrus & Subtropical	1,024	3.17	3.61	3,249	3,698
Corn	20,336	3.04	3.66	61,856	74,433
Cotton	1,028	3.38	4.22	3,473	4,338
Grain	5,793	1.61	2.02	9,351	11,676
Onions & Garlic	617	2.02	3.32	1,246	2,045
Other Deciduous	960	2.54	3.37	2,434	3,232
Other Field ⁶	122	2.68	3.96	327	484
Other Truck	1,161	2.35	3.05	2,732	3,537
Pasture	9,397	3.92	4.49	36,822	42,150
Potatoes	4,329	2.26	3.15	9,765	13,639
Tomato-Fresh	932	2.43	2.85	2,261	2,662
Turf	1,618	3.56	4.21	5,753	6,810
Vineyards	3,716	3.25	3.94	12,075	14,645
Total	84,562			274,663	326,471

1. Based on Land IQ crop acreages

2. Based on Kern Subbasin C2VSim Model

3. Based on Kern Subbasin C2VSim Model, includes precip, pumping, surface water deliveries

As discussed above, the total crop water needs are based on the ETc from IRTC and LandIQ summarized in **Tables 12** through **16**. Applied water is also simulated by the model taking into account effective precipitation, surface water deliveries, and estimated groundwater pumping. The crop consumptive use and the applied water demands from **Tables 12** through **16** for WY 2020 to WY 2024 are summarized in **Table 17**.

Table 17. Crop Consumptive Use and Applied Water Demands

	Water Year 2020	Water Year 2021	Water Year 2022	Water Year 2023	Water Year 2024
Crop Consumptive Use ¹	219,104	245,322	249,280	255,696	274,663
Applied Water Demand ²	292,898	304,322	299,941	342,125	326,471

1. Crop consumptive use is derived from Tables 12-16

2. Applied water demands are from Tables 12-16, includes precipitation, pumping, sw deliveries

Table 18 summarizes the irrigated acreages and the total irrigable area within the District for WY 2020 to WY 2024. The Land IQ data characterizes parcels as single cropped, multiple cropped, or idle. Multiple-cropping occurs on about 18 to 21 percent of the total agricultural acres.

Table 18. Irrigated Acreages and Multiple Cropping

	Water Year 2020	Water Year 2021	Water Year 2022	Water Year 2023	Water Year 2024
District Irrigable Acres ¹	83,362	85,967	84,269	87,146	84,562
Total Agricultural Acres					
Single Cropped Acres	63,914	65,388	62,294	66,193	64,278
Multiple-Cropped Acres	19,448	20,579	21,975	20,952	20,285
Idle Acres	22,234	19,495	19,801	17,400	20,762
Total Agricultural Acres^{1,2}	105,595	105,462	104,071	104,545	105,324

1. All non-idle agricultural land, based Land IQ acreage

2. Includes Idle Land

3.3 ENVIRONMENTAL WATER USE

In an agreement with DWR, KDWD has dedicated approximately 10 acres of wetland/willow bosque within the area of the Buena Vista Recharge Basins. This area will have varying water levels based on the natural hydrologic cycles and recharge basin operations. The District dedicates up to 30 AFY of intermittent flows to maintain a functioning wetland environment.

3.4 RECREATIONAL WATER USE

There are no recreational uses that are supported by the District’s surface water supplies. There are several privately owned small artificial lakes that rely on pumped groundwater. Recreational lake use was quantified for the KRGSA GSP (Todd, 2020b) water budgets and water use was estimated at 54 AFY to 68 AFY. This water usage is small relative to other groundwater pumping and has not been included in this Plan.

3.5 MUNICIPAL AND INDUSTRIAL USE

The District does not supply water directly for municipal or industrial (M&I) water uses but it recharges water for the City of Bakersfield (City or COB), California Water Service-Bakersfield District (Cal Water), Greenfield County Water District (Greenfield CWD), and Lamont Public Utility District (Lamont PUD) through a sale of canal operational recharge. Urban areas that serve M&I water supply have expanded into KDWD over time (mostly from the north) and currently cover more than 15,000 acres within KDWD boundaries. Urban areas within or adjacent to KDWD include a portion of the City of Bakersfield, the communities of Greenfield, Lamont and Weedpatch, and other unincorporated areas and communities such as the small urban area of Pumpkin Center. Service areas of the City overlap District areas while the KDWD boundary circumnavigates around some of the smaller communities (e.g., Greenfield and Lamont). Some private domestic wells also pump within District boundaries, but net consumption of this water is judged small compared to agricultural and municipal consumption; it has not been estimated for this Plan.

Table 19 summarizes production from municipal wells that supply the City of Bakersfield. Groundwater production from municipal wells that supply the communities of Lamont and Greenfield are also included. While the Lamont Public Utility District wells are located outside of the KDWD boundary, they are included in the KRGSA and part of overall groundwater management in the area.

Table 19. Municipal/Industrial Groundwater Pumping (AF)

Municipal / Industrial Entity	Water Year 2020	Water Year 2021	Water Year 2022	Water Year 2023	Water Year 2024
City of Bakersfield ¹	5,581	4,377	3,577	3,787	5,321
Lamont Public Utility District	3,562	3,583	3,364	3,332	3,449
Greenfield County Water District	2,580	2,785	2,609	2,506	2,641
Total	11,724	10,745	9,550	9,625	11,411

1. Includes COB wells within KDWD and Cal Water well 202

3.6 GROUNDWATER RECHARGE USE

The District recharges surplus SWP and Kern River water for groundwater replenishment and conjunctive management. Recharge occurs through District-constructed recharge basins as well as operational recharge from unlined canals. KDWD also operates groundwater banking facilities for out-of-district banking partners including Metropolitan and SBVMWD. Recharge basins and canal locations are shown on **Figure 4**. Return of banked water to KDWD banking partners occurs primarily through

exchange of surface supplies. **Table 20** presents a summary of the District’s groundwater recharge for WY 2020 to WY 2024. It also includes estimates of deep percolation for irrigation return flows.

Table 20. Groundwater Recharge (AF)

Location/Groundwater Basin	Water Year 2020	Water Year 2021	Water Year 2022	Water Year 2023	Water Year 2024
District Recharge Basins (for KDWD) ¹	12,262	756	990	53,811	22,500
District Recharge Basins (for others) ²	1,177	-	-	11,658	-
District Canal Operational Recharge ³	59,164	40,621	48,671	63,468	73,091
Deep Percolation (from irrigation) ⁴	67,895	56,043	48,269	77,904	51,263
Total	140,498	97,420	97,930	206,841	146,854

1. From KDWD. Includes in-district banking and banking conveyance
2. From KDWD. Includes direct recharge and conveyance recharge for others
3. Canal Operational Recharge from Kern River Reports (COB, 2014-2019)
4. Deep percolation of irrigation return flows estimated by Kern Subbasin C2VSim Model

3.7 OTHER WATER USE

No other transfers or exchanges have occurred in WY 2020 through WY 2024. The District has entered into various other operational exchanges that help to maximize the efficient use of its water supplies. For example, the District’s SWP contract deliveries are made through an exchange with BVWSD where KDWD’s SWP supplies are delivered to BVWSD in exchange for BVWSD’s Kern River supplies. These exchange deliveries are discussed in Section 4.1.

4 DESCRIPTION OF QUANTITY AND QUALITY OF WATER RESOURCES

Water supply for the KDWD includes groundwater, Kern River surface water, banked water, imported water (SWP), and recycled water. A summary of these water sources and associated uses are provided below.

4.1 WATER SUPPLY QUANTITY

4.1.1 Surface Water Supply

Kern River Water

The Kern River originates northeast of Bakersfield in the Inyo and Sequoia National Forests and the Sequoia National Park at the base of Mt. Whitney. For more than 150 years, the Kern River has provided most of the natural surface water supply to the Kern County Subbasin, including water for agricultural irrigation, drinking water, groundwater banking and replenishment, and other uses. The Kern River channel enters the Subbasin from the northeast, north of the KDWD service area, and traverses southwest to the stream gage shown as Second Point on **Figure 1**.

Flows in the River consist of regulated and managed releases from Lake Isabella, approximately 25 miles upstream of the First Point stream gage shown on **Figure 1**. Isabella Dam and Lake Isabella were constructed by the U.S. Army Corp of Engineers in 1953 to address downstream flooding. Since that time, Isabella Dam has been operated for flood control, hydroelectric power, water supply, and conservation storage. KDWD has out-of-District storage space in Lake Isabella (see Section 2.1.2 and **Table 5**).

Distribution of water within the First Point service area of the Kern River was adjudicated in the 1900 Shaw Decree. Over the years, Kern River water has been apportioned based on entitlements determined through canal company consolidations, water rights transfers and acquisitions, court decisions, and agreements. In 1888, two permanent stream gage stations, First Point and Second Point, were established to measure flow in the Kern River on a real-time basis (**Figure 1**). The First Point daily discharge is used to allocate water among various Kern River interests, referred to as First Point diverters, Second Point diverters, and Lower River diverters. The Second Point of measurement is approximately 20 miles downstream and is used to check upstream water use (and entitlements) with diversion rights on the Lower River. KDWD, City of Bakersfield, and North Kern Water Storage District are First Point water diverters. The City monitors, manages, and records flows and diversions in the River on behalf of the Kern River Watermaster for all water users.

Flows in the Kern River are highly variable, subject to both flooding and drought. To provide a means of comparison between current flows and long-term average flow conditions, an annual river index is calculated and included in annual Kern River Hydrographic Reports. An index of 100 percent is representative of the long-term average flow in the River. The annual indices between 1995 and 2025 are provided on **Figure 7**. During that time, the annual Kern River Index ranged from 19 percent (2015) to 320 percent (2023). KDWD's Kern River diversion rights (for the former Kern Island, Buena Vista, Stine, Farmers, and Eastside canal companies) were acquired from the City in 1976. Diversions are based on the river stage and the priority of each water right as summarized in **Table 21**. Current Kern River supplies have been reduced as a result of litigation that placed caps on the District's entitlement for various rights in certain months. The District estimates that its average long-term Kern River water

supply will be about 202,000 AFY (Todd, 2011). Restrictions on the District’s Kern River entitlement supply are summarized in **Table 22**.

Table 21. KDWD Kern River Water Rights

Service Area	Right	River Stage	Diversion Priority	Appropriation Date
	(cfs)	(cfs)		
Kern Island	300	0 - 300	1	12/1/1869
	56	3,106 - 3,162	26	
Buena Vista	80	330 - 410	4	7/19/1870
	90	2,416 - 2,526	22	
Stine	150	550 - 700	7	12/12/1872
Farmers	150	730 - 880	9	4/28/1873
Eastside ¹	83/300 th of Kern Island			12/1/1869

1. In effect from March 15 through August 15

Table 22. Kern River Entitlement Caps from Court Decisions

Service Area	January	August	September	October	November	December
Kern Island	8,493	-	-	6,989	3,375	2,050
Buena Vista	347	-	-	-	236	191
Stine	-	-	583	1,380	22	12
Farmers	-	610	268	-	-	207

Imported Water

In 1972, KDWD contracted with KCWA to receive 30,000 AFY of SWP water imported into the county via the California Aqueduct. KDWD’s SWP contract included a buildup schedule that reached the maximum amount in 1990, consisting of 25,500 AF of firm supply and 4,500 AF of unregulated surplus supply to be delivered during four winter months on an as-available basis. In 1994, the surplus water was eliminated as part of the Monterey Agreement, revising the District’s SWP maximum amount to 25,500 AFY. The SWP water supply is used to reduce the area’s groundwater overdraft and provide supplemental surface water deliveries to various portions of the District.

In the absence of a readily-available means to convey SWP water into the District, KDWD executed exchange agreements with BVWSD to allow BVWSD access to KDWD’s SWP allotment for an equal amount of BVWSD water supply on the Kern River. This arrangement allowed KDWD to divert its SWP allotment from the Kern River using existing facilities while BVWSD accessed the SWP water directly from the California Aqueduct, which is adjacent to its service area.

Court imposed pumping restrictions on the deliveries of SWP water south of the Sacramento-San Joaquin River Delta have resulted in reductions in the District’s SWP supplies. Since the early 1990s, the availability of SWP water has declined. Over the last 20 years, the District’s full allotment of SWP water was available during only two years.

Purchases of water from the CVP (Section 215 floodwater), SWP Article 21, lower Kern River rights, and other sources are made when available and advantageous to the District. The District has also received water supplies from Metropolitan and SBVMWD as a part of its groundwater banking programs. A summary of the District’s surface water supplies for WY 2020-WY 2024 is shown in **Table 23**.

Table 23. Surface Water Deliveries for Agricultural (AF)

Source	Water Year 2020	Water Year 2021	Water Year 2022	Water Year 2023	Water Year 2024
Surface Water (Kern River) ¹	97,438	74,360	72,228	123,530	133,792
Surface Water (SWP) ²	5,730	3,827	0	4,492	10,927
Lower River Purchase ²	0	0	0	1,372	0
Metropolitan In Lieu ⁴	728	0	0	18,342	0
Total	103,168	78,187	72,228	129,394	144,719

1. Based on the Kern River Annual Reports - deliveries to KDWD service areas (COB, 2020-2025)

2. Based on the Kern River Annual Reports (COB, 2020-2025)

3. These volumes are actual deliveries and do not represent total supply

4.1.2 Groundwater Supply

Groundwater is an important source of agricultural, domestic, and municipal supply in the District, which is managed conjunctively with numerous surface water supplies. The Kern County Subbasin (5-22.14, **Figure 1**) is the largest in the state, covering approximately 2,834 square miles (1,813,630 acres) and containing more than 40,000,000 AF of groundwater in storage (Todd, 2020b).

The location of District wells and groundwater recharge areas are shown on **Figure 4** and described in Section 2.12. Groundwater recharge operations are summarized in **Table 20** in Section 3.6. Estimated groundwater pumping within the District for WY 2020 through WY 2024 is shown in **Table 24**.

Table 24. Groundwater Supplies (AF)

Source	Water Year 2020	Water Year 2021	Water Year 2022	Water Year 2023	Water Year 2024
District Well Pumping ¹	0	0	0	0	0
Municipal Pumping ²	11,724	10,745	9,550	9,625	11,411
Private Well Pumping ¹	110,341	184,530	166,411	108,604	133,322
Total	122,065	195,275	175,961	118,229	144,733

1. From Table 11. Pumping from District owned groundwater wells is used to return banked water to out of District banking partners through surface water exchanges and not delivered to ag users.

2. From Table 19

4.1.3 Other Water Supplies

Recycled water

Treated effluent from the City of Bakersfield’s Wastewater Treatment Plants (WWTP) #2 and #3 is used for irrigation on land within KDWD. The amount of applied treated effluent ranged between 4,000 and 8,000 AFY between WY 2020 and WY 2024 (Table 25). Recycled water from WWTP #2 is primarily delivered to nearby lands south of the plant between the Kern Island Central Canal and the Eastside Canal. Some recycled water from WWTP #3 is also delivered west of the Buena Vista Service area for a farm owned and operated by the City of Los Angeles called Green Acres; a portion of this farm lies within KDWD boundaries.

Table 25. Recycled Water Supplies (AF)

Source	Water Year 2020	Water Year 2021	Water Year 2022	Water Year 2023	Water Year 2024
City of Bakersfield WWTP #2 ¹	2,988	4,910	2,988	2,988	2,988
City of Bakersfield WWTP #3 ¹	1,210	3,672	3,225	3,175	2,735
Total	4,198	8,582	6,213	6,163	5,723

1. From Table 11. Estimated average treated effluent deliveries to lands within KDWD

Drainage

KDWD does not operate drainage facilities. Landowners, especially in areas of perched water, may operate tile drains and reuse drainage flows for irrigation, but these amounts are unknown and considered a relatively minor component of the water balance.

4.2 WATER SUPPLY QUALITY

KDWD water supply is generally of excellent quality. The sections below provide information on Kern River, SWP, groundwater, and recycled water quality.

4.2.1 Surface Water Quality

Kern River water is the primary source of surface water in KDWD and is of excellent quality. Total dissolved solids (TDS) represents the total concentration of anions and cations in water and is used as an indicator of mineralization, salt content, and overall water quality. From 1995 to 2007, TDS concentrations of the Kern River have ranged from 28 milligrams per liter (mg/L) to 215 mg/L with an average of 97 mg/L (Todd, 2020b). TDS in SWP water imported into Kern County has averaged about 245 mg/L between WY 1995 – WY 2014 with slightly lower averages in wet years and higher averages in dry years.

ID4 reports on the quality of surface water from the Kern River, Friant-Kern, and SWP through the Aqueduct in their annual Report on Water Conditions. Kern River and California Aqueduct (SWP) water quality data from the 2022 Report on Water Conditions for select parameters are presented in **Table 26**. Although the water quality listed in **Table 26** is reported by KCWA, sources are the same as those used by KDWD, and water quality is expected to be similar. As indicated in the table, TDS concentrations were 143 mg/L in Kern River water and 468 mg/L in SWP water.

Table 26. Water Quality, 2022

Source Water Quality, 2022 ¹				
Parameter	Units	Kern River Water Quality	SWP Water Quality	Groundwater Quality
Total Dissolved Solids (TDS)	mg/L	118	468	143
Calcium	mg/L	18.0	37.9	24.2
Boron	mg/L	0.18	0.13	0.13
Arsenic	mg/L	0.006	0.005	0.003
Magnesium	mg/L	3.23	2.62	2.22
Potassium	mg/L	2.4	1.37	2.01
Sodium	mg/L	23.4	151	24.7
Chloride	mg/L	7.34	156	19.9
Sulfate	mg/L	20.1	108	18.1
Nitrate (as N)	mg/L	ND	1	0.6

1. Kern County Water Agency Improvement District No. 4 (ID4), 2023, Report on Water Conditions 2022.

4.2.2 Groundwater Quality from Kern GSP

The water quality of KDWD groundwater is similar to local surface water with relatively low TDS levels resulting, in part, from decades of actively managed recharge of both local and imported surface water supplies in the area. As part of the Kern Subbasin GSP, six constituents of concern were selected based on existing conditions or potential future impacts. These constituents are:

- 1,2,3-Trichloropropane (1,2,3-TCP)
- Arsenic
- Uranium
- Nitrate
- Nitrite
- TDS

The current range of concentrations for these constituents were reported for each hydrogeologic conceptual model (HCM) area. KDWD is located in the South Basin HCM. Groundwater quality for this HCM for the constituents of concern is shown in **Table 27**. In addition to TDS and nitrate, KDWD has identified 1,2,3-Trichloropropane (TCP) and arsenic, as a potential threat to drinking water supplies in the KRGSA. Neither of these constituents adversely impact crops and are not a concern for agricultural irrigation water. These are discussed in more detail below.

Table 27. Groundwater Quality – South Basin HCM

Constituent of Concern	Units	2010 to 2014			2015 to 2023		
		Range	Median (ppt)	# of Wells Sampled	Range	Median (ppt)	# of Wells Sampled
1,2,3-TCP	ng/L	ND – 450	ND	118	ND – 570	ND	169
Arsenic	ug/L	ND - 140	5.1	137	ND - 220	5.7	170
Uranium	pCi/L	ND - 76.7	ND	123	ND - 76.3	ND	140
Nitrate	mg/L	ND - 22	2.5	157	ND – 34	2.3	233
Nitrite	mg/L	ND	ND	144	ND - 1.9	ND	209
TDS	mg/L	130 - 1800	270	121	110 - 2100	313	172

1. From Kern GSP, South Basin HCM, 2025

2. ND = Non-detect

Total Dissolved Solids. TDS concentrations in the Kern County Subbasin average between 400 and 450 mg/L but can range up to 5,000 mg/L in the western Subbasin (Todd, 2020b). As shown in **Table 27**, which summarizes well concentrations in the South Basin HCM, TDS concentrations range from low to high. Concentrations of TDS are lowest (less than 500 mg/L) in the vicinity of the Kern River and south of the Kern River extending through most of the KDWD service area. TDS concentrations are higher (above 1,000 and 1,500 mg/L), along the southern rim and extending northward in the southeastern KDWD. In general, elevated TDS concentrations occur within and near the area where perched water has been observed and may indicate concentrations of salts in the clay soils where surface water does not readily infiltrate into the subsurface. Select groundwater quality parameters for 2019 as reported by ID4 is included in **Table 26**. The ID4 groundwater supply is similar to groundwater quality within the northern portion of KDWD because of like influences from Kern River recharge.

Nitrate.

Sources of nitrate in groundwater include excess application of nitrogen fertilizer in irrigated areas, feedlot and dairy drainage, leaching from septic systems, wastewater percolation, industrial wastewater, aerospace activities, and food processing wastes. Some nitrate is also believed to be from natural sources and predates irrigation and farming. Median concentrations of nitrate (as NO³) in the South Basin HCM (**Table 27**) are 2.5 and 2.3 mg/L, for the reporting period 2010 to 2014 and 2015 to 2023, respectively. Most nitrate concentrations are below the MCL throughout the HCM. However, localized areas have at least one detection that has exceeded the MCL. Most of the elevated detections in the KDWD area are in agricultural areas with some detections near a dairy or a wastewater treatment facility. In addition, the detections are in rural areas where domestic septic systems may also be a contributing factor.

TCP. 1,2,3-Trichloropropane (TCP) is a man-made chlorinated hydrocarbon that occurs as an intermediate in chemical manufacturing. TCP has been found throughout the Central Valley of California

as a result of its inclusion in soil fumigants used in agriculture to control nematodes. Although TCP was banned from pesticides in the 1990s, its widespread occurrence in Kern County groundwater has been documented in agricultural areas. In 2017 the California Water Resources Control Board Division of Drinking Water (DDW) adopted an MCL of 0.005 micrograms per liter (ug/L) (5 parts per trillion, ppt) for TCP. TCP sampling data are compiled on **Table 27** and show there are local detections much greater than the MCL in the HCM. DDW is overseeing additional sampling requirements and compiling data for analysis. Most of the TCP data generated to date have occurred in the metropolitan Bakersfield municipal wellfields in the northern KRGSA area and extending into the northern portion of KDWD. TCP treatment facilities have been installed on many impacted municipal wells.

Arsenic. Arsenic is a naturally occurring trace element in the rocks, soils, and groundwater of the Kern County Subbasin. In general, elevated arsenic concentrations are correlated to deeper groundwater where the dissolved oxygen content is low, and pH is high. The California MCL for arsenic is 0.010 mg/L (10 ug/L). Arsenic concentrations are a constituent of concern primarily in the northern KRGSA where municipal wellfields have been impacted with elevated concentrations have impacted drinking water supplies as water levels have declined during the recent drought. Wells in the area have detected arsenic at levels up to twice the MCL (20 ug/L) and above, respectively. Arsenic treatment facilities have been installed on wells as shown by the black diamonds.

4.2.3 Groundwater Quality from Kern GSP

KDWD has sampled select groundwater wells in their jurisdiction. Data from August 2025 is shown in **Table 28**, wells within each region were averaged. The TDS and NO3 concentrations are on the lower range of the South Basin HCM and show KDWD has generally good water quality. There were no detections of 1,2,3 – TCP. KDWD did not sample for Arsenic, Nitrite, or Uranium.

Table 28. Groundwater Quality – KDWD

Well	Units	Arvin - Edison	Buena Vista	Fr	KB	KD	Kern Island
Constituent							
Alkalinity	mg/L	117	104	115	123	150	130
Bicarbonate	mg/L	117	104	115	123	150	130
Carbonate	mg/L	ND	ND	ND	ND	ND	ND
Hydroxide	mg/L	ND	ND	ND	ND	ND	ND
Chloride	mg/L	20	9	7	10	45	49
Conductivity	umhos/cm	365	315	300	330	550	440
Nitrate as N	mg/L	3	1	1	0	5	3
pH		8	8	8	8	8	8
Sulfate	mg/L	32	27	19	28	51	28
TDS	mg/L	250	200	190	210	325	270
1,2,3 - TCP	ug/L	0	ND	ND	ND	ND	ND
Boron	mg/L	0	0	0	0	0	0
Calcium	mg/L	41	29	33	35	57	47
Magnesium	mg/L	7	1	5	4	13	8
Potassium	mg/L	2	1	2	1	4	2
Sodium	mg/L	25	41	21	31	44	32

4.2.4 Other Water Quality

Recycled water

Wastewater treated effluent from the City of Bakersfield’s Wastewater Treatment Plants #2 and #3 is used for irrigation in the KDWD. Treated effluent quality is monitored and reported to the Regional Water Quality Control Board (RWQCB). Recycled water quality data from the Waste Discharge Requirements permit (WDR) is listed in **Table 29**.

Table 29. Recycled Water Quality

Constituent	Units	COB WWTP #2 Effluent ¹	COB WWTP #3 Effluent ²
Chloride	mg/L	78	75
Sodium	mg/L	83	83
EC	umhos/cm	750	798
TDS	mg/L	413	446
Nitrate as Nitrogen	mg/L	6.0	0.46
Total Nitrogen	mg/L	-	27
Arsenic	ug/L	2.0	1.38
Lead	ug/L	1.62	-
Copper	ug/L	20	-
Iron	ug/L	-	0.16
Manganese	ug/L	-	0.01

1. From RWQCB-Central Valley Region Waste Discharge Requirements for City of Bakersfield Wastewater Treatment Plant #2 Order No. R5-2009-0122

2. From RWQCB-Central Valley Region Waste Discharge Requirements for City of Bakersfield Wastewater Treatment Plant #3 Order No. R5-2009-0087

Drainage

The District does not operate any drains and does not monitor water quality of privately operated drain water facilities.

4.2.5 Source Water Quality Monitoring

The City of Bakersfield monitors Kern River water quality at various locations along the Carrier and River Canals. Some data are compiled and included in the annual Hydrographic Reports developed for the Kern River. Additional monitoring occurs in compliance with the City and County Stormwater Permit, which includes a monitoring and reporting program approved by the Central Valley Water Board. The objectives of the monitoring are to assess the chemical, physical, and biological impacts of urban runoff on receiving waters, including the Kern River.

ID4 monitors the quality of its water sources (Kern River, SWP, and groundwater) and includes this information in its annual Report on Water Conditions.

Groundwater quality is also sampled in compliance with the State Water Board Long-Term Irrigated Lands Regulatory Program (ILRP). This program provides for waste discharge requirements from irrigated lands through surface water and groundwater monitoring. Owners or operators of irrigated lands may comply with the program either as individuals or through coalition groups. In the KDWD area, the Kern River Watershed Coalition Authority was formed to combine resources in order to monitor,

review, analyze, and reduce the cost of compliance in the Kern River sub-watershed. Selected wells in the ILRP monitoring program will be analyzed annually for nitrate concentrations; TDS will be analyzed on a five-year interval. In addition, the ILRP provides best-management practices (BMPs) for control of nitrate and TDS including BMPs for fertilizer application to control and manage nitrogen.

In the Kern Subbasin GSP, a Representative Monitoring Network (RMN) for water quality was established. Sustainable Management Criteria (SMCs) have been established for each well and for each constituent of concern (arsenic, nitrate, nitrite, nitrate + nitrite, TDS, 1,2,3-TCP, and uranium). If the SMCs are triggered, the GSP lays out a process to notify groundwater users, identify the issue, and implement projects and management actions to mitigate the impact. There are 14 Representative Monitoring Wells (RMWs) in the KRGSA area and sampling will begin in Spring 2026.

5 WATER BUDGET

This section summarizes the District water use and supply for the WY 2020 to WY 2024 time period. This water budget provides an overall picture of water use within the District and the ability of the available supplies to meet these water demands. A discussion of water management objectives follows the water budget section, and at the end of the section, the efficiency of agricultural water use is quantified.

5.1 QUANTIFYING WATER SUPPLIES

Table 30 on the next page summarizes the water supply in KDWD. The volume of water supply provided by KDWD, other sources, and water used for recharge are shown for Water Years 2020-2024.

5.1.1 KDWD Water Sources Quantities

Water supplies available to KDWD include Kern River water, SWP water, recycled water, groundwater, recharged water, and effective precipitation. The District recharges additional Kern River and SWP water when available in its basins and canals. These water supply sources are discussed in Section 4 and **Table 30** tabulates water source quantities for WY 2020 through WY 2024. The District does not operate any surface or subsurface drains nor are there flows to saline sinks. There are flows to perched water that may be recoverable, but this small amount of water has not been quantified.

5.1.2 Other Agricultural Water Sources Quantities

Supply in the KDWD service area includes pumping from private wells. In addition, recycled water from the City of Bakersfield is used to provide ag supplies in local areas. Finally, effective precipitation also satisfies ag demand and is considered a water supply for ag uses.

5.1.3 Recharge

As described in Section 3, the District recharges surplus SWP and Kern River water for groundwater replenishment and conjunctive management.

5.1.4 Municipal and Industrial Use

In addition to ag demands, M&I water demand is satisfied through municipal pumping.

Table 30. Water Supply Quantities (AF)

Source	Water Year 2020	Water Year 2021	Water Year 2022	Water Year 2023	Water Year 2024
<i>KDWD Ag Supplies</i>					
Surface Water (SWP) ¹	5,730	3,827	0	4,492	10,927
Surface Water (Kern River) ¹	97,438	74,360	72,228	123,530	133,792
Surface Water (Lower Kern River) ¹	0	0	0	1,372	0
Surface Water (In-lieu Deliveries) ¹	728	0	0	18,342	0
District Wells ²	0	0	0	0	0
<i>Other Ag Supplies</i>					
Private Wells ²	110,341	184,530	166,411	108,604	133,322
Recycled Water ³	4,198	8,582	6,213	6,163	5,723
Effective Precipitation ⁴	60,478	21,747	35,409	80,488	54,666
Total Ag	278,185	293,046	280,261	323,277	338,430
<i>Recharge</i>					
Water Banked for KDWD ⁵	12,262	756	990	53,811	22,500
Water Banked for Others ⁵	1,177	0	0	11,658	0
Operational Recharge ⁵	59,164	40,621	48,671	63,468	73,091
Total Recharge	72,603	41,377	49,661	128,937	95,591
<i>Municipal and Industrial</i>					
Municipal and Industrial Pumping ²	11,724	10,745	9,550	9,625	11,411
Total M&I	11,724	10,745	9,550	9,625	11,411
Grand Total	362,512	334,423	334,703	440,556	435,459

1. From Table 11. Based on the Kern River Annual Reports - deliveries to KDWD service areas (COB, 2020-2024)

2. From Table 30. Private wells are estimated by numerical model and M&I pumping from municipal sources.

3. From Table 25. Estimated average effluent deliveries to lands within KDWD

4. From Table 11. Simulated by numerical model

5. From Table 20. Includes direct recharge and conveyance recharge for others

5.2 QUANTIFICATION OF WATER USES

Water use within the District is summarized in **Table 31**. It includes crop consumption, water that was recharged via District basins or canals (operational recharge), and water pumped for M&I use by wells owned by the City of Bakersfield, Cal Water, Lamont PUD, and Greenfield CWD. Section 3 provides additional details on these water uses.

Table 31. Quantify Water Use (AF)

Water Use	Water Year 2020	Water Year 2021	Water Year 2022	Water Year 2023	Water Year 2024
Crop Consumptive Use ¹	219,104	245,322	249,280	255,696	274,663
Operational Recharge ²	59,164	40,621	48,671	63,468	73,091
Environmental Use	30	30	30	30	30
Municipal/Industrial ³	11,724	10,745	9,550	9,625	11,411
Transfers or Exchanges ⁴	0	0	0	0	0
Groundwater Recharge ⁵	13,439	756	990	65,469	22,500
Total	303,460	297,474	308,520	394,287	381,695

1. From Table 17

2. From Table 20

3. From Table 19

4. Banking program return is not included here since returns are made by exchange of surface supplies not delivered to the District and not included in Table 29

5. From Table 20. Includes recharge for KDWD and for others

5.3 ANNUAL WATER BUDGET

Water budget inflows are summarized in **Table 32**. Inflows include all the water delivered to agricultural customers. It does not include groundwater recharge since the recharge components would be considered both an inflow (surface water into the District) and an outflow (recharged to the groundwater basin). In addition, M&I pumping is also not included in the inflow and outflow tables since it would also be considered an inflow (pumping within District) and an outflow (delivery for M&I use).

Table 32. Water Budget Inflows (AF)

Inflow Component	AWMP Location for Supporting Calculations	How Quantified	Uncertainty	Water Year 2020	Water Year 2021	Water Year 2022	Water Year 2023	Water Year 2024
Effective Precipitation ¹	Section 3.2	Modeled	+/- 10% Estimated	60,478	21,747	35,409	80,488	54,666
Water Supplier surface water diversions ¹	Sections 3.2, 4.1.1	Measured	+/- 5 to 10% Estimated	103,896	78,187	72,228	147,736	144,719
Water supplier groundwater pumping ¹	Sections 3.2, 4.1.2	Measured	+/- 2% Estimated	0	0	0	0	0
Private groundwater pumping ¹	Section 3.2	Modeled	+/- 20% Estimated	110,341	184,530	166,411	108,604	133,322
WWTP irrigation ¹	Sections 3.2, 4.1.3	Measured	+/- 5 to 10% Estimated	4,198	8,582	6,213	6,163	5,723
Total				278,913	293,046	280,261	342,991	338,430

1. From Table 17.

Outflows are shown on **Table 33** and include crop consumptive use and deep percolation of applied water. There are no quantified surface water outflows. The deep percolation term was calculated by the groundwater model (**Table 32**).

Table 33. Water Budget Outflows (AF)

Outflow Component	AWMP Location for Supporting Calculations	How Quantified	Uncertainty	Water Year 2020	Water Year 2021	Water Year 2022	Water Year 2023	Water Year 2024
Crop Consumptive Use ¹	Section 3.2	Calculated and Estimated	+/- 20% Estimated	219,104	245,322	249,280	255,696	274,663
Surface Outflows	NA	NA	NA	0	0	0	0	0
Deep Percolations ²	Section 3.6	Numerical Model	+/- 20% Estimated	67,895	56,043	48,269	77,904	51,263
Total				286,998	301,365	297,549	333,600	325,927

1. From Table 17

2. From groundwater model

5.4 IDENTIFY WATER MANAGEMENT OBJECTIVES

KDWD has developed water management objectives (WMOs) to improve long-term planning and resiliency, adapt to climate change, and improve regional self-reliance. These WMOs are listed and discussed below.

- Encourage more efficient water use at the farm level
- Optimize conjunctive management of imported SWP water and local Kern River water with groundwater resources through direct use and groundwater banking and recovery
- Implement Kern River Groundwater Sustainability Agency projects and management actions applicable to KDWD
- Operate within the established KRGSA GSP sustainable management criteria.

Encourage More Efficient Water Use at the Farm Level

Efficient water use by landowners can reduce water demands if growers are made aware of more efficient practices and if these practices are cost effective. The District encourages more efficient water use at the farm level in many ways and will continue to do so as technology and new methods or options become available. The District measures all water delivered to customers and water pricing is generally based on quantity delivered. The customers can use this as a benchmark to track reduced water use and save money. The District contributes to the North West Kern Resource Conservation District (NWKRCDD) which provides technical assistance to landowners to allow them to make the best use of their land and irrigation water. Landowners can receive technical assistance regarding improvements to on-farm irrigation systems through the NWKRCDD. The District provides information on NWKRCDD's Mobile Lab on its website (<https://www.kerndelta.org/irrigationmobilelab>), and landowners are encouraged to take advantage of the NWKRCDD services.

Optimize Conjunctive Management of Imported SWP Water and Local Kern River Water with Groundwater Resources Through Direct Use and Groundwater Banking and Recovery

Conjunctive use of water in the Kern County Subbasin is a key component of sustainable water management. KDWD is optimizing conjunctive management, groundwater banking, and best use of additional source water (such as recycled water), as available. Groundwater banking consists of numerous strategies including intentional recharge along unlined canals, in-District banking for out-of-basin participants, and out-of-District banking for both recovery and overdraft protection. In addition, the District incorporates out-of-basin storage in Isabella Reservoir to maximize use of its surface water rights. Finally, the District is active in optimization of all local water sources obtained through cooperative transfers, exchanges, and agreements with other water districts and even shared recharge facilities.

Implement Kern River Groundwater Sustainability Agency Projects and Management Actions Applicable to KDWD

The Kern Subbasin GSP (Kern, 2025) identified projects and management actions to achieve groundwater sustainability. Key ones applicable to KDWD include its Water Allocation Plan (WAP) (Todd, 2011). The WAP was developed to optimize the use of Kern River water available to the District, provide operational flexibility, and maximize the beneficial use of its Kern River water rights. It prioritizes Kern River water use as follows:

1. Irrigation deliveries within each Service Area
2. Irrigation deliveries within the District
3. Municipal and industrial use
4. In-District groundwater recharge
5. Pioneer Project groundwater recharge
6. Other uses (including meeting additional surface demands, groundwater recharge, and transfers to out-of-district agencies).

Another project is the increase in use of recycled water within the KDWD area. The City will increase recycled water use inside of the KRGSA from its WWTP No. 3 in 2026 when a contract for use outside of the KRGSA expires (about 72 percent is currently used outside of the KRGSA).

Annual Kern Subbasin GSP reports will document the status of these projects and identify additional ones if needed.

5.5 QUANTIFY THE EFFICIENCY OF AGRICULTURAL WATER USE

For the AWMP, suppliers are to quantify the efficiency of agricultural water use within its service area using one or more of the four provided water use efficiency quantification methods developed by DWR and documented in A Proposed Methodology for Quantifying the Efficiency of Agricultural Water Use (DWR, 2012). The method chosen must account for all of the applicable water uses:

Method 1: Crop Water Use

Method 2: Agronomic Water Use

Method 3: Environmental Water Use

Method 4: Recoverable Flows

Method 1 (Crop Water Use) and Method 4 (Recoverable Flows) are applicable to KDWD and are provided below. KDWD has little agronomic or environmental water use within its service area.

Method 1: Crop Consumptive Use Fraction

The Method 1 calculation quantifies the efficiency of applied irrigation water consumed directly for crop growth. The crop consumptive use fraction (CCUF) for WY 2020- WY 2024 are shown in **Table 34**. The CCUFs are all around 75-84 percent, which is the irrigation efficiency assumed for irrigation of crops with KDWD.

Method 4: Water Management Fraction

Method 4 documents the amount of water that is recoverable for reuse. For KDWD, this includes deep percolation of irrigation water, operational recharge, and groundwater recharge. The water management fraction (WMF) for WY 2020- WY 2024 are shown in **Table 35**. The recoverable flows values include groundwater recharge for the District, 11 percent of the groundwater recharge conducted for others, operational recharge, and deep percolation of irrigation return flows. An 11 percent conveyance loss is retained by KDWD in its banking agreements with others. The WMFs are all over 1, indicative of the positive water management, primarily as a result of the intentional groundwater recharge that occurs within KDWD.

Table 34. Crop Consumptive Use Fraction

Water Year	Evapotranspiration of Applied Water (ETAW)¹	Applied Water (AW)¹	Crop Consumptive Use Fraction
	AFY	AFY	No units
WY 2020	219,104	292,898	0.75
WY 2021	245,322	304,322	0.81
WY 2022	249,280	299,941	0.83
WY 2023	255,696	342,125	0.75
WY 2024	274,663	326,471	0.84

1. From Table 17

Table 35. Water Management Fraction

Water Year	Evapotranspiration of Applied Water (ETAW)¹	Recoverable Flows (RF)²	Applied Water (AW)¹	Water Management Fraction
	Acre-Feet per Year	Acre-Feet per Year	Acre-Feet per Year	No units
WY 2020	219,104	140,498	292,898	1.23
WY 2021	245,322	97,420	304,322	1.13
WY 2022	249,280	97,930	299,941	1.16
WY 2023	255,696	206,841	342,125	1.35
WY 2024	274,663	146,854	326,471	1.29

1. From Table 17

2. From Table 20. Includes groundwater recharge for District, others, canal seepage and deep percolation of irrigation return flows

6 CLIMATE CHANGE

Climate change factors that have the potential to affect the District and its water supplies include:

- Changes in water demand
- Decreased water supply
- Extreme weather events.

Three projected scenarios, each representing a different expected future hydrologic condition, were developed for the Kern Subbasin GSP by adapting C2VSimFG-Kern model. They included:

- Future Baseline Conditions: Repeat historical hydrology with expected future water supply.
- 2030 Climate Conditions: Adjust historical hydrology for 2030 climatic conditions and expected water supply.
- 2070 Climate Conditions: Adjust historical hydrology for 2070 climatic conditions and expected water supply.

Future Baseline Conditions: For the Baseline Scenario without SGMA Projects, the groundwater budget for WY2021 to WY2040 (Appendix H-1, Table 19) repeats the 20-year historical hydrologic period so it provides a direct comparison of the differences between the projected future Baseline without SGMA Projects and the historical condition. The primary difference between historical conditions and the projected future Baseline is a nearly 20 percent decrease in imported surface water deliveries primarily from the SWP due to the OCAP BO. Over this period, the average groundwater pumping basin-wide is 1,581,000 AFY, which includes agricultural pumping, urban pumping, and exported water. This results in an additional loss of groundwater storage of about 50,000 AFY over the 50-year projected future Baseline period.

The 2030 Climate Change Conditions: The 2030 Climate scenarios simulate how the Kern Subbasin responds, assuming hydrologic conditions representing a potentially drier climate and are based on the DWR Climate Change Guidance and Resource Guide (DWR, 2018A and 2018B). The 2030 Climate scenarios were run both with and without SGMA projects.

The no project scenario resulted in an additional decline of about 56,600 AFY in groundwater storage due to the climate change impacts. With PMAs expected to be implemented, the groundwater storage expected decline is 12,900 AFY (from WY 2041 to 2070).

2070 Climate Change Conditions: The 2070 Scenarios simulate how the Kern Subbasin aquifer would respond, assuming hydrologic conditions representing a potentially very dry climate and are based on the DWR Climate Change Guidance (DWR, 2018A and 2018B). The 2070 Climate Change Scenarios were run both with and without SGMA Projects. The groundwater budget for the 2070 Climate Scenario without SGMA Projects over WY2041 to WY2070 is compared the same period for the Baseline Scenario without SGMA Projects to assess the relative change due to the climate change assumptions. The results show a net increase in aquifer inflows of about 66,100 AFY, however, the net aquifer outflows increase by about 231,600 AFY. This is mostly attributed to an even greater climate shift to earlier rainfall making more surface water available for water banking and conjunctive use projects during the winter but less available for irrigation in the summer resulting in higher groundwater pumping. The net change in groundwater storage is an additional decline of about 165,500 AFY due to the climate change assumptions.

The change in groundwater storage for 2070 Climate Scenario with SGMA Projects improves by about 371,600 AFY. This change results in a net decline of groundwater in aquifer storage over WY2041 to WY2070 of about 118,300 AFY.

KDWD's Drought Plan (**Appendix E**) consists of optimizing conjunctive management, groundwater banking, and best use of additional source water (such as recycled water) as available. In brief, District landowners are incentivized to rely on surface water resources when available to preserve groundwater resources for use in drought conditions. Groundwater banking consists of numerous strategies including intentional recharge along unlined canals, in-District banking for out-of-basin participants, and out-of-District banking for both recovery and overdraft protection. In addition, the District incorporates out-of-basin storage in Isabella Reservoir. Finally, the District is active in optimization of all local water sources obtained through cooperative transfers, exchanges, and agreements with other water districts and even shared recharge facilities. Incorporations of these policies and strategies as components of the Drought Plan are summarized in the sections below.

7 WATER USE EFFICIENCY INFORMATION

7.1 EFFICIENT WATER MANAGEMENT PRACTICES IMPLEMENTATION AND REPORTING

EWMPs are best management practices implemented to improve water use efficiency. The California Water Code mandates that AWMPs address a specific list of 16 EWMPs: 2 critical and 14 conditional. These EWMPs are summarized in **Table 36**. Twelve of the 16 EWMPs have been fully or partially implemented. EWMPs that have not been implemented are listed in **Table 37**. EWMPs only need to be implemented if they are locally cost-effective and technically feasible. Three of the 14 conditional EWMPs have not been implemented; all three are not locally cost-effective and one is not technically feasible.

Table 36. EWMPs Implemented or Planned

Report of EWMPs Implemented/Planned (Water Code §10608.48(d), §10608.48 (e), and §10826 (e))		
EWMP No.	Description of EWMP Implemented	Description of EWMPs Planned
Critical EWMPs		
1	<i>Measure the volume of water delivered to customers with sufficient accuracy to comply with subdivision (a) of Section 531.10 and to implement paragraph (2) (10608.48(b)).</i>	All deliveries to District customers are measured using either metered or gated turnouts (see Sections 2.2.2 and Appendix E).
2	<i>Adopt a pricing structure for water customers based at least in part on quantity delivered (10608.48(b)).</i>	Water pricing is based on the volume of water delivered (see Section 2.2.3 and Appendix E).
Conditionally Required EWMPs (locally cost-effective and technically feasible EWMPs)		
1	<i>Facilitate alternative land use for lands with exceptionally high water duties or whose irrigation contributes to significant problems, including drainage.</i>	The District contributes to the North West Kern Resource Conservation District (NWKRCDD) which provides technical assistance to landowners to allow them to make the best use of their land and irrigation water. Landowners are encouraged to take advantage of the NWKRCDD services.
2	<i>Facilitation of use of available recycled water that otherwise would not be used beneficially, meets health and safety criteria, and does not harm crops or soils. The use of recycled urban wastewater can be an important element in overall water management.</i>	Recycled urban wastewater is currently used for agricultural irrigation within the District.
3	<i>Facilitate the financing of capital improvements for on-farm irrigation systems.</i>	Landowners are able to receive technical assistance regarding improvements to on-farm irrigation systems through the NWKRCDD.
4	<i>Implement an incentive pricing system that promotes one of the following goals (A) more efficient water use at the farm level such that it reduces waste, (B) conjunctive use of groundwater, (C) Appropriate use of groundwater recharge, (D) Reduction in problem drainage (E) Improved management of environmental resources (F) Effective management of all water sources throughout the year by adjusting seasonal pricing structures based on current conditions.</i>	The KDWD has established a pricing structure for surface water that is tied directly to the quantity of surface water used. This promotes the efficient use of water supplies since customers have to pay for all water deliveries. SWP supplies are priced so that those supplies will be utilized in-lieu of groundwater pumping.

Report of EWMPs Implemented/Planned

(Water Code §10608.48(d), §10608.48 (e), and §10826 (e))

EWMP No.	Description of EWMP Implemented	Description of EWMPs Planned
5	<i>Expand line or pipe distribution systems, construct regulatory reservoirs to increase distribution system flexibility and capacity, decrease maintenance, and reduce seepage.</i>	Most of the District's irrigation deliveries are supplied through unlined canals and ditches which allow for groundwater recharge through operational recharge. The District considers this a benefit and does not have plans to expand canal lining or pipelining. Some reaches of the canals and ditches have been lined or pipelined as urban development has encroached into the District service area.
6	<i>Increase flexibility in water ordering by, and delivered to, water customers within operational limits.</i>	The District has increased its flexibility in water ordering and deliveries through the supplies and facilities available from its groundwater banking programs, including groundwater recharge basins and District owned wells. Since 2020, the KDWD WAP provides additional flexibility to meet demand efficiently.
7	<i>Construct and operate supplier spill and tail-water systems.</i>	The District does not operate spill and tail- water systems. Due to water quality concerns, landowner spill and tail-water is not allowed in the KDWD delivery system.
8	<i>Increase planned conjunctive use of surface water and groundwater within the supplier service area.</i>	The District has increased its conjunctive use activities through the implementation of its groundwater banking and surface water exchange programs. The District has extended canals to serve additional customers. KDWD WAP provides greater ability to utilize all sources efficiently.
9	<i>Automate canal control devices.</i>	While the KDWD has automated many of its metering devices, the KDWD does not have any automated canal control devices. However, KDWD has expanded implementation of remote data collection in critical system locations.
10	<i>Facilitate or promote customer pump testing and evaluation.</i>	The District encourages the use of PG&E or pump companies for customer well pump testing and evaluations.
11	<i>Designate a water conservation coordinator who will develop and implement the water management plan and prepare progress reports.</i>	The District has designated the groundwater manager to serve as the Water Conservation Coordinator.
12	<i>Provide for the availability of water management services to water users. These services may include, but are not limited to, all of the following: A. On-farm irrigation and drainage system evaluations, B. Normal year and real-time irrigation scheduling and crop evapotranspiration information, C. Surface water, groundwater, and drainage water quantity and quality data, D. Agricultural water management educational programs and materials for farmers, staff, and the public.</i>	These services are available to KDWD customers through the District and the agencies that it supports. The NWKRCDD provides on-farm evaluations, irrigation scheduling information is available through the California Irrigation Management System (CIMIS), and the KCWA provides water management educational programs and materials. Surface and groundwater quality data is available from the District, the KCWA and the California DWR. The District encourages the use of these services. KDWD has recently engaged Land IQ to provide a daily ET estimation tool for District growers.
13	<i>Evaluate the policies of agencies that provide the supplier with water to identify the potential for institutional change to allow more flexible water deliveries and storage.</i>	The District works with the KCWA, Friant Water Users, and Kern River interests to execute water exchanges that allow for more flexible water deliveries and storage.
14	<i>Evaluate and improve the efficiencies of the supplier's pumps.</i>	The KDWD routinely evaluates the condition and efficiency of its existing pumps as a part of its on-going maintenance program.

Table 37. Non-Implemented EWMPs

Non-Implemented EWMP Documentation (Water Code §10608.48(d), §10608.48 (e), and §10826 (e))				
EWMP No.	Description	<i>(check one or both)</i>		Justification/Documentation*
		Technically Infeasible	Not Locally Cost-Effective	
5	Expand lining or pipelining		X	Unlined canals provide groundwater recharge benefits to the District service area that would be lost by canal lining or pipelining. Lining the 127 miles of the District's unlined canals would not be cost effective. Short sections of canals have been lined or pipelined as a part of urban development projects. This practice will continue where it is feasible with the District's operations.
7	Supplier spill and tail-water systems	X	X	Tail-water systems are operated by individual customers. The District does not want potentially poor quality water to enter its canals and create water quality issues for its customers.
9	Automate canal controls		X	It is not believed that installation of automatic canal controls would result in significant water savings. Due to the length of canals and the size of the District's service area, implementation of an automated canal control system would not be cost effective at this time. However, KDWD has expanded implementation of remote data collection in critical system locations.

Estimates of water use efficiency improvements that have occurred since the 2015 AWMP and estimates of water use efficiency improvements estimated to occur 5 and 10 years in the future are listed in **Table 38**.

Table 38. EWMPs Efficiency Improvements

Report of EWMPs Efficiency Improvements (Water Code §10608.48(d), §10608.48 (e), and §10826 (e))		
EWMP No.	Estimate of Water Use Efficiency Improvements That Occurred Since Last Report <i>(Quantitative or Descriptive)</i>	Estimated Water Use Efficiency Improvements 5 and 10 years in future <i>(Quantitative or Descriptive)</i>
Critical		
1 -Water Measurement	No change since last AWMP	Moderate
2 - Volume-Based Pricing	Slight	Slight
Conditional		
1 – Alternate Land Use	Slight Conversion of agricultural land to urban	Moderate Conversion of agricultural land to urban
2 – Recycled Water Use	Slight	Slight
3 – On-Farm Irrigation Capital Improvements	No change since last AWMP	Moderate
4 – Incentive Pricing Structure	Slight	Slight
5 – Infrastructure Improvements	No change since last AWMP	None
6 – Order/Delivery Flexibility	Moderate WAP allocation of Kern River supplies	Moderate KRGSP implementation measures
7 – Supplier Spill and Tailwater Systems	Not applicable. No change since last AWMP	None. Not applicable
8 – Conjunctive Use	Moderate Groundwater banking, WAP, purchase Pioneer Project water	Moderate KRGSP implementation measures, purchase Pioneer Project water when available, banking expansion
9 – Automated Canal Controls	No change since last AWMP	SCADA measurement devices at headworks of canals, District will consider expanding into service areas
10 – Customer Pump Test/Eval.	Slight	Slight
11 – Water Conservation Coordinator	Slight	Slight
12 – Water Management Services to Customers	Slight	Slight
13 – Identify Institutional Changes	Moderate Implementation of WAP	Moderate KRGSP implementation measures
14 – Supplier Pump Improved Efficiency	Slight	Slight

7.2 EWMP IMPLEMENTATION SCHEDULE

The schedule to implement EWMPs appears in **Table 39**.

Table 39. Schedule to Implement EWMPs

Schedule to Implement EWMPs (Water Code §10608.56 (d))			
EWMP No.	Implementation Schedule	Finance Plan	Budget Allotment
Critical			
1 – Water Measurement	Implemented	Annual District Budget	Staff time
2 - Volume-Based Pricing	Implemented	Annual District Budget	Staff time
Conditional			
1 – Alternate Land Use	Implemented	Annual District Budget	\$4,000
2 – Recycled Water Use	Implemented	Annual District Budget	Staff time
3 – On-Farm Irrigation Capital Improvements	Partially Implemented	Annual District Budget	Part of NWRCD contributions (see EWMP #1)
4 – Incentive Pricing Structure	Implemented	Annual District Budget	Staff time
5 – Infrastructure Improvements	Partially Implemented	Annual District Budget	Staff time
6 – Order/Delivery Flexibility	Implemented	Annual District Budget	Staff time
7 – Supplier Spill and Tailwater Systems	Not Implemented	NA	NA
8 – Conjunctive Use	Implemented	Annual District Budget	Staff time, capital for land purchases
9 – Automated Canal Controls	Partially Implemented	NA	NA
10 – Customer Pump Test/Eval.	Implemented	Annual District Budget	Staff time
11 – Water Conservation Coordinator	Implantation	Annual District Budget	Staff time
12 – Water Management Services to Customers	Implemented	Annual District Budget	Staff time
13 – Identify Institutional Changes	Implemented	Annual District Budget	Staff time
14 – Supplier Pump Improved Efficiency	Implemented	Annual District Budget	Staff time

8 SUPPORTING DOCUMENTATION

8.1 AGRICULTURAL WATER MEASUREMENT REGULATION DOCUMENTATION

Agricultural water suppliers are to follow critical efficient management practices identified in California Water Code §597. These include that the water delivered to customers be measured with sufficient accuracy to comply with subdivision (a) of §531.10 and to adopt a pricing structure for water customers based at least in part on quantity delivered. Agricultural water suppliers are to submit an annual report to DWR that summarizes aggregated farm-gate delivery data, on a monthly or bimonthly basis, using best professional practices. Its pricing structure (**Table 10**) includes rates based on water delivered.

The District assesses the condition and performance of the measurement devices as a part of its on-going maintenance program. The District follows the flow meter testing and calibration program procedures outlined in the SBX7-7 Compliance for Agricultural Irrigation Districts prepared by the Irrigation Training and Research Center (ITRC, 2012).

KDWD measures almost all of its delivered water at the delivery point or farm-gate of single customers but there are a couple of exceptions where the District measures an overpour upstream of a turnout (at the weir). In these cases, measurements are taken at the overpour (not far upstream from the customer gate) because this measurement was determined to be more reliable than the turnout measurement. In a few cases, the canal system ends in a grower's reservoir where there is no gate, so the overpour is measured at the reservoir.

There are a few farm-gate deliveries that cannot be measured at the gate itself. This is due to the gate being submerged on both ends thus nullifying the procedures outlined in the SBX7-7 compliance procedures and the US Bureau of Reclamation's handbooks. These gates are measured just upstream in the canal using a standard sharp crested weir overpour procedure.

8.2 DELTA PLAN CONSISTENCY

An agricultural water supplier that anticipates participating in or receiving water from a proposed project that involves transferring water through, exporting water from, or using water in the Sacramento-San Joaquin Delta (Delta) should consider providing information in their 2025 AWMPs that can then be used in the covered action process to demonstrate consistency with the Delta Plan policy WR P1, *Reduce Reliance on the Delta Through Improved Regional Water Self-Reliance* (California Water Code, Title 23, § 5003). KDWD receives SWP water and has included this section in the AWMP to qualitatively demonstrate reduced reliance on Delta water.

KDWD has used an historical average of 18,655 AFY of SWP water. For the KRGSA GSP (Todd, 2020b), KDWD's baseline use of SWP water was 15,765 AFY. Future use projections were reduced to 15,294 AFY by 2030 and 14,537 AFY by 2070. These projections were developed to simulate potential climate change impacts. Generally, SWP water is only about 5 percent of the District's water supply sources. This is based on an estimated average annual supply of 320,000 AFY and a SWP supply of 15,765 AFY. For Water Years 2020-2025, SWP ranged from 0 to 10,927 AFY or 0 to 3 percent of total supply, due in part to reduce allocations during drought and increased flexibility with Kern River water supplies.

As stated in multiple sections of this AWMP, KDWD is optimizing conjunctive management, groundwater banking, and best use of additional source water (such as recycled water) as available. Groundwater

banking consists of numerous strategies including intentional recharge along unlined canals, in-District banking for out-of-basin participants, and out-of-District banking for both recovery and overdraft protection. In addition, the District incorporates out-of-basin storage in Isabella Reservoir. Finally, the District is active in optimization of all local water sources obtained through cooperative transfers, exchanges, and agreements with other water districts and even shared recharge facilities.

Several factors enhance KDWD's resilience to reduced reductions in supplies. Most notable are the conjunctive management programs including conveyance, distribution, recharge and use in the KDWD and surrounding area. Examples of local conjunctive use include (but are not limited to) the following:

- Storage space in Isabella Reservoir is managed for Kern River water and, by exchange, imported SWP water.
- Recycled water is used for recharge and irrigation.
- Kern River water is intentionally discharged to unlined canals to promote surface water operational recharge and groundwater recharge.
- Recharge basins and banking programs in the area and managed recharge in the Kern River Channel.
- Water banking programs are active with participation by local agencies and out-of-basin agencies.

The District is a participant in ongoing, planned, and future programs to strengthen and diversify its water sources and provide flexibility in years with limited water supply. This diversification of water sources (Kern River, SWP, groundwater, recycled water) coupled with conjunctive use (intentional canal recharge, in-district banking programs, and out-of-district/in-basin banking programs) provides the District with extensive operational flexibility. This flexibility results in optimizing use of available water supplies, especially during drought times.

The District's WAP (Todd, 2011) allows for optimization of the District's surface water, allowing more groundwater supplies to be available throughout the District during periods when surface water supplies are limited. The District has historically and will continue to purchase excess water in Pioneer Storage Project, just northwest of the KDWD, for overdraft protection. Because water recharged for this purpose will not be recovered, it provides both groundwater replenishment and a rise in groundwater levels in northwestern KDWD. Also, growers in KDWD use recycled water (obtained from the City of Bakersfield) for irrigation, which decreases local reliance on groundwater resources and provides an alternative agricultural water source even in drought conditions.

The Kern Subbasin GSP (Kern, 2025) identified KRGSA and Basin-wide projects and management actions to achieve groundwater sustainability that will also result in reduced reliance on Delta supplies because groundwater can be used during times of limited surface water supply. By using all of its Kern River entitlement (less obligations) conjunctively with imported water and recycled water supplies, the KRGSA is implementing six Phase One projects that collectively provide:

- Increases in recharge and banking to offset potential future deficits and avoid overdraft
- Decreases in municipal and agricultural pumping
- Optimal conjunctive management of surface water and groundwater resources
- Improvements in drinking water quality for disadvantaged communities
- Mitigation for the potential of land subsidence in disadvantaged communities.

Three water supply projects have been identified to meet potential future deficits in the historical and projected water budgets, thereby reducing the potential for future overdraft conditions while providing adequate supply to support projected demands. A summary of the eight Phase One water supply projects and one member agency understanding is provided in **Table 41**. Additional details and status of these projects and additional future projects can be found in the Kern Subbasin GSP annual reports.

Incorporation of these policies and strategies will assist with the reduction in reliance on Delta water.

Table 40. Phase One Project Summary for KRGSA in the Kern Subbasin GSP

GSP PMA	Project	Description	Expected Benefits
KRGSA-1	Water Allocation Plan	KDWD plans to use its full Kern River entitlement as prioritized in its Water Allocation Plan (WAP) for the Agricultural MA. The WAP total annual average supply has been corrected for planned sales to NKWSD.	20,797 AFY
KRGSA-2	Kern River Optimized Conjunctive Use	The City plans to use its full Kern River entitlement, less current obligations, to mitigate undesirable results for water levels and water quality in the Urban MA.	89,619 AFY
KRGSA-3	Lining of Pool #8	The Kern County Water Agency's (Agency) - Improvement District No. 4 (ID4) Cross Valley Canal (CVC) Extension Lining Project – Pool No. 8 (Project) includes installation of approximately 5,280 lineal feet of fiber-reinforced concrete lining to reduce seepage, increase water delivery reliability, reduce maintenance efforts and reduce the potential for canal breaches.	Completed
KRGSA-4	Urban Conservation	Future urban demand will be reduced from current modeled levels. The average urban demand for Metropolitan Bakersfield is reported by local UWMPs is 211 gallons per capita per day (gpcpd). Previous estimates for future demand were estimated at 248 gpcpd and basin wide GSP modelling included this estimate in all future model scenarios.	21,299 AFY
KRGSA-5	ENCSD North Weedpatch Highway Water System Consolidation	Up to six small water systems in the northeast KRGSA will be consolidated into the ENCSD system for benefits to drinking water quality, including disadvantaged communities (DACs).	No new supply; improved water quality to DACs
KRGSA-6	South Kern and Old River Mutual Water System Consolidation	Two small mutual water systems in the southern KRGSA will be consolidated into the City of Bakersfield's domestic water system for benefits to drinking water quality, including to disadvantaged communities (DACs). The Project will include new water distribution systems connecting the mutual water systems with the City's water system, which improve drinking water quality for the DAC.	No new supply; improved water quality to DACs
KRGSA-7	Expand Recycled Water Use in the KRGSA	The City will increase recycled water use inside of the KRGSA from its WWTP No. 3 in 2026 when a contract for use outside of the KRGSA expires (about 72% is currently used outside of the KRGSA).	11,556 to 13,407 AFY
KRGSA-8	Conversion of Agricultural Lands to Urban Use	Approximately 10,000 acres of current KRGSA agricultural lands is expected to be urbanized; this future urban demand is already included in the projected water budget, so 100% of this agricultural water use represents a demand reduction.	27,000 AFY
	Possible Water Exchange	KRGSA member agencies can perform exchanges of surface water and groundwater for benefits to water quality, including to DACs	No new supply; improved water quality to DACs

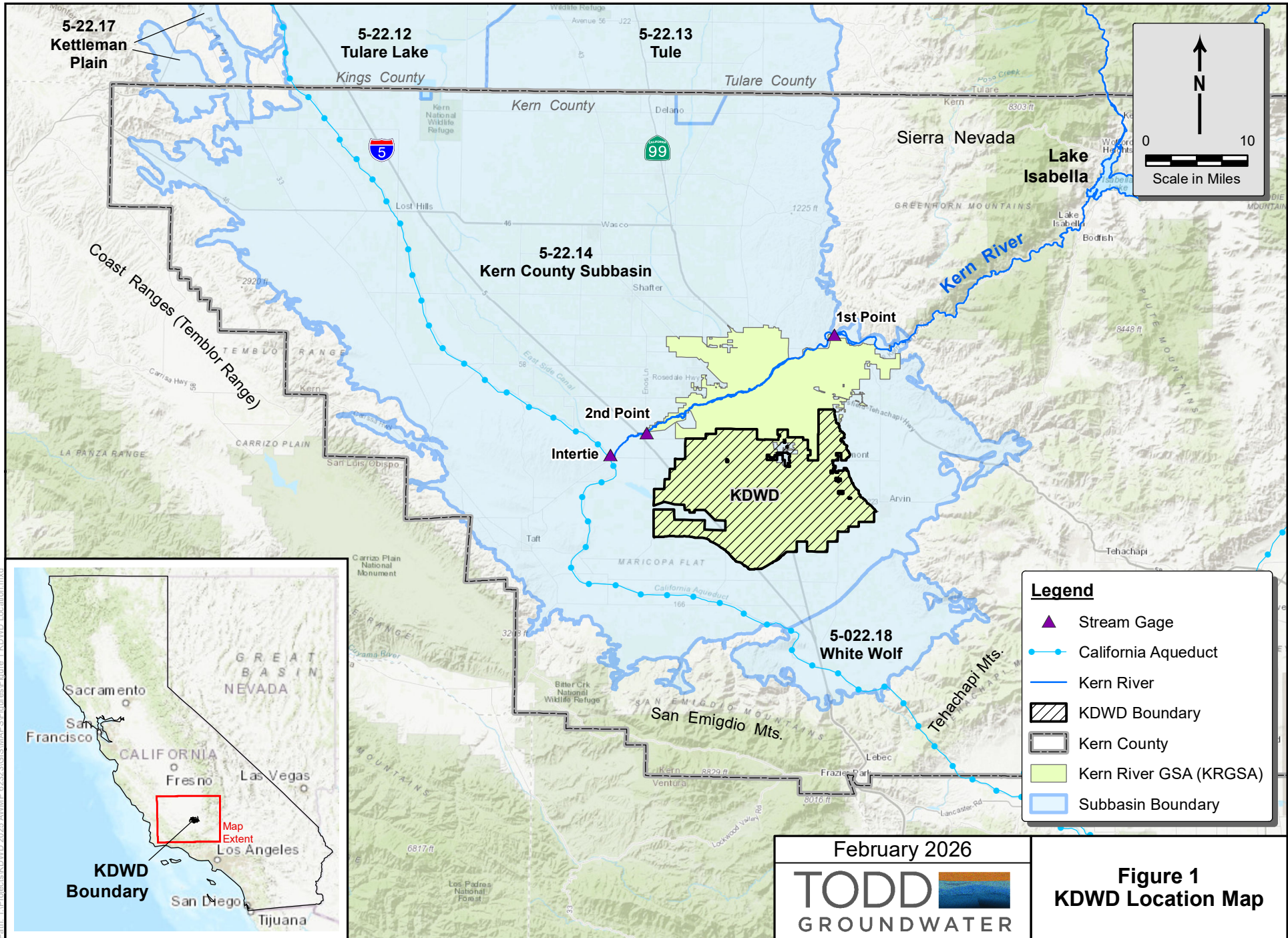
9 REFERENCES

- AECOM, 2015, Kern Delta Water District Agricultural Water Management Plan, December.
- California Department of Water Resources (DWR), 2011, Consumptive Use Program – Cup Plus, Version 3.0, <https://water.ca.gov/Programs/Water-Use-And-Efficiency/Land-And-Water-Use/Agricultural-Water-Use-Models>. <https://water.ca.gov/Programs/Water-Use-And-Efficiency/Land-And-Water-Use/Agricultural-Water-Use-Models>
- California Department of Water Resources (DWR), 2012, A Proposed Methodology for Quantifying the Efficiency of Agricultural Water Use, May 8.
- California Irrigation Management Information System (CIMIS), 2026, Eto at Arvin-Edison Station #125 from 3/22/1995 to present <https://cimis.water.ca.gov/WSNReportCriteria.aspx>, accessed January 31, 2026.
- Carollo Engineers, 2015, 2014 Storm Water Management Plan, City of Bakersfield and County of Kern, October.
- City of Bakersfield (COB), 2014-2026, Kern River 2014-2025 Hydrographic Annual Reports, report published by City of Bakersfield – Water Resources.
- Irrigation Training & Research Center (ITRC), 2012, SBx7 Flow Rate Measurement Compliance for Agricultural Irrigation Districts, ITRC Report No. R12-002, Irrigation Training & Research Center (ITRC) at California Polytechnic State University, San Luis Obispo, August 26, 2012, <http://www.itrc.org/reports/sbx7.htm>.
- Kern County, 2026, Kern County Department of Agriculture and Measurement Standards digital annual permitted crop boundaries, <http://www.kernag.com/gis/gis-data.asp>.
- Kern County Subbasin, Kern Subbasin Groundwater Sustainability Plan, August 2025.
- Kern County Water Agency Improvement District No. 4 (KCWA ID4), 2026, Report on Water Conditions 2025.
- Kern Delta Water District, 2017, Kern Delta Water District Water Deliveries Report, July.
- National Oceanic and Atmospheric Administration (NOAA), 2026, Monthly Precipitation at Bakersfield, 1889-2025 from National Climatic Data Center (NCDC), <https://www.ncdc.noaa.gov/cdo-web/>, accessed March 2026; 2018-2025 from Western Regional Climate Center NOAA Cooperative Stations, <https://wrcc.dri.edu/cgi-bin/cliMAIN.pl?ca0442>.
- Natural Resources Conservation Service (NRCS), 2018, SSURGO soil survey on-line map database available at <http://websoilsurvey.nrcs.usda.gov/app/WebSoilSurvey.aspx>, last accessed December 2018.
- Todd Engineers, 2011, Kern Delta Water District Water Allocation Plan.
- Todd Engineers, 2013, Final Groundwater Management Plan Update, Kern Delta Water District, October 11.
- Todd Groundwater, 2020a, Kern County Subbasin Groundwater Sustainability Plans (GSPs) First Annual Report, Water Year 2019, April 1.
- Todd Groundwater, 2020b, Final Groundwater Sustainability Plan (GSP) Kern River Groundwater Sustainability Agency (KRGSA), January.
- Todd Groundwater, 2021, Kern Delta Water District Agricultural Water Management Plan, March.

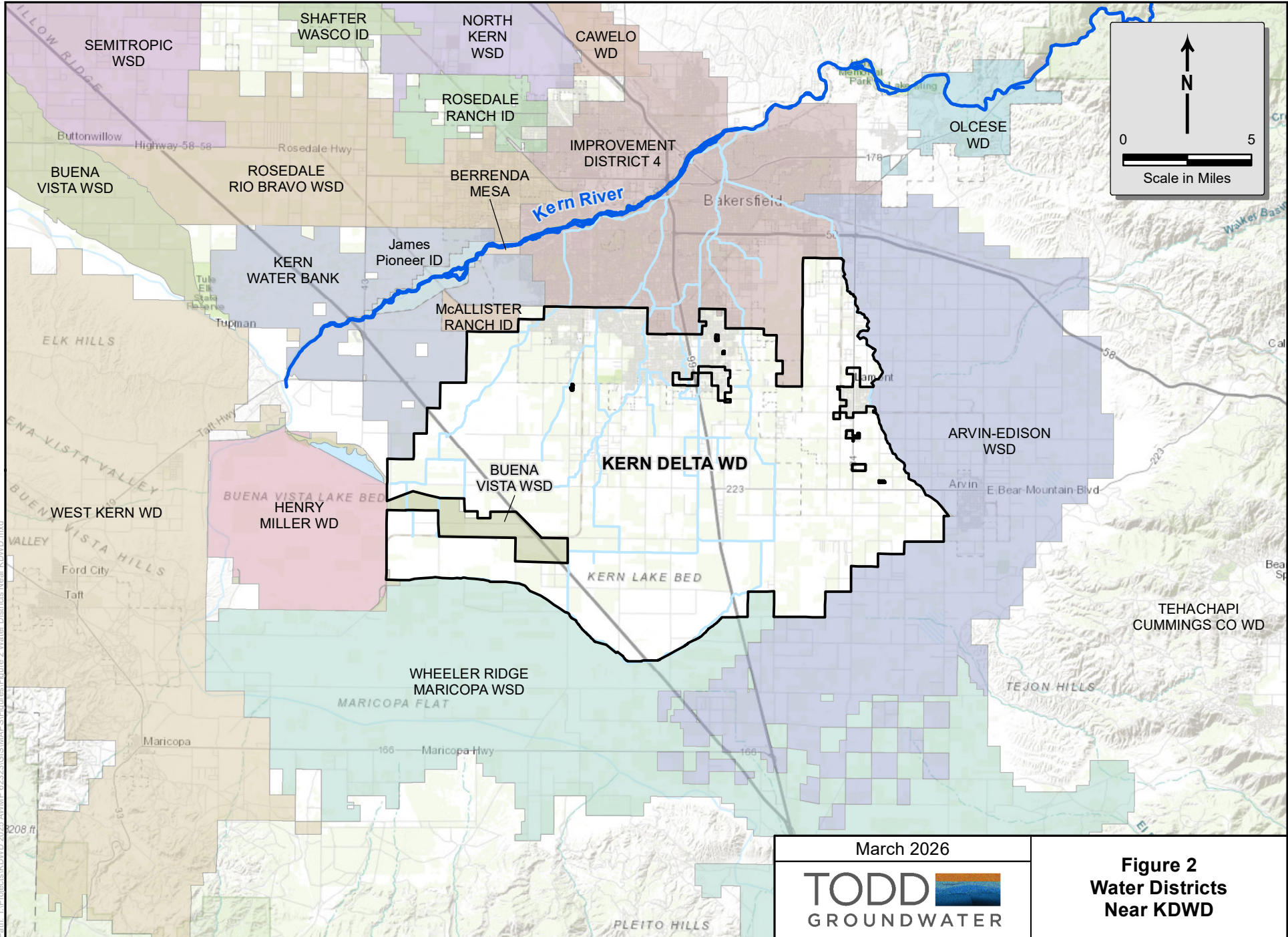
Todd Groundwater, 2023-2025, Kern Subbasin SGMA Annual Report WY 2023-2025.

Western Regional Climate Center NOAA Cooperative Stations (WRCC), 2026, <https://wrcc.dri.edu/cgi-bin/cliMAIN.pl?ca0442>, 1938-2025, accessed January 31.

FIGURES



Path: T:\Projects\KDWD 2025 AWM\Map_Figures\GIS\MAPS\Figures\Figure_1_KDWD_Location.mxd

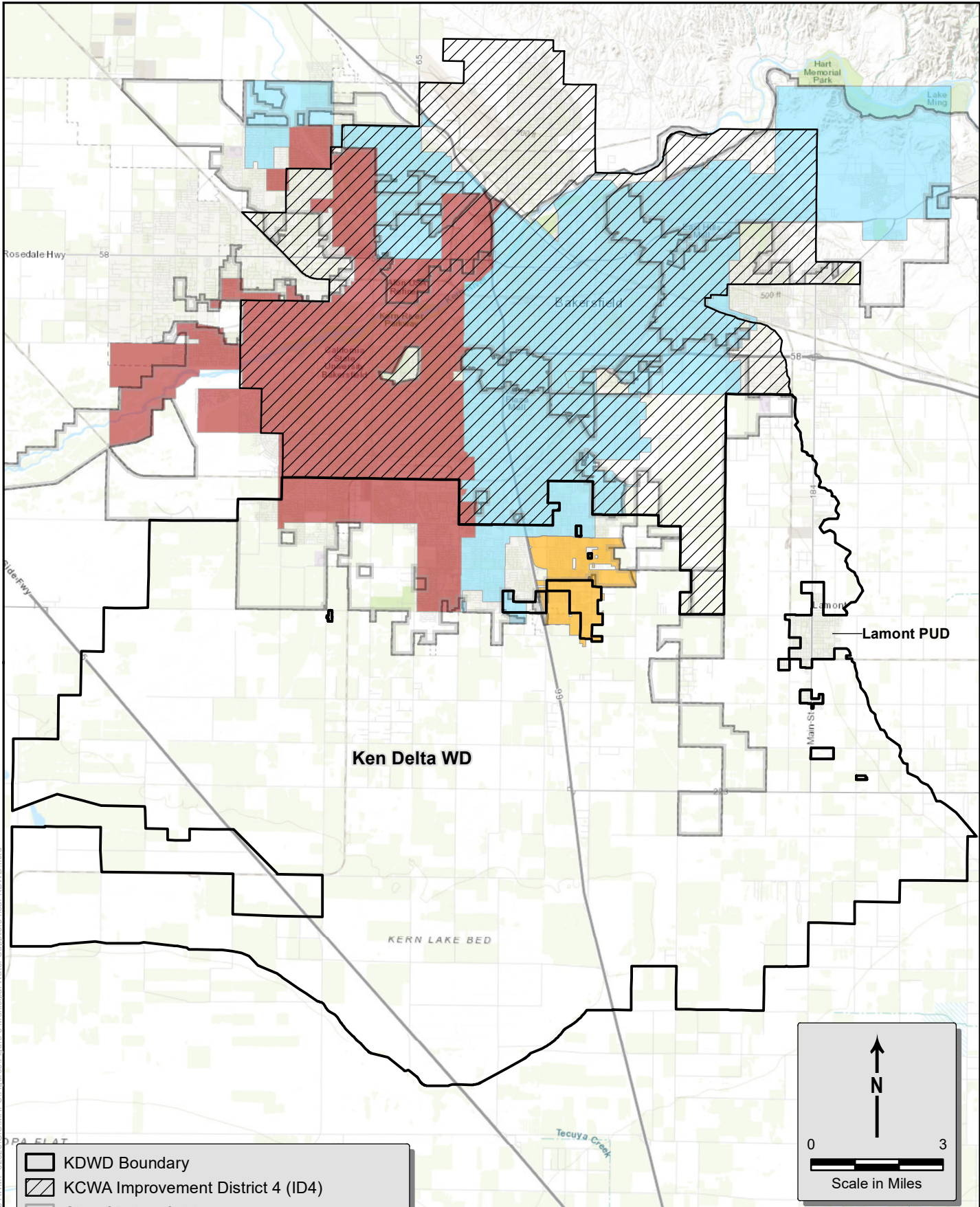


Path: T:\Projects\KDWD 2025 AWMP 6223\GIS\MAPS\Figures\Figure 2 Water Districts Near KDWD.mxd



March 2026



Figure 2
Water Districts
Near KDWD



Path: T:\Projects\KDWD 2025 AMWP 62323\GIS\MAPS\Figures\Figure 3 Municipal Water Suppliers near KDWD.mxd

-  KDWD Boundary
-  KCWA Improvement District 4 (ID4)
-  City of Bakersfield
-  City of Bakersfield Water Service Department
-  California Water Service Company
-  Greenfield County Water District

February 2026

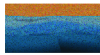
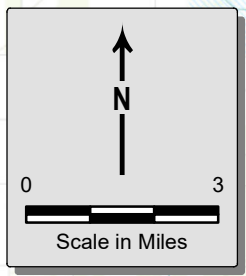
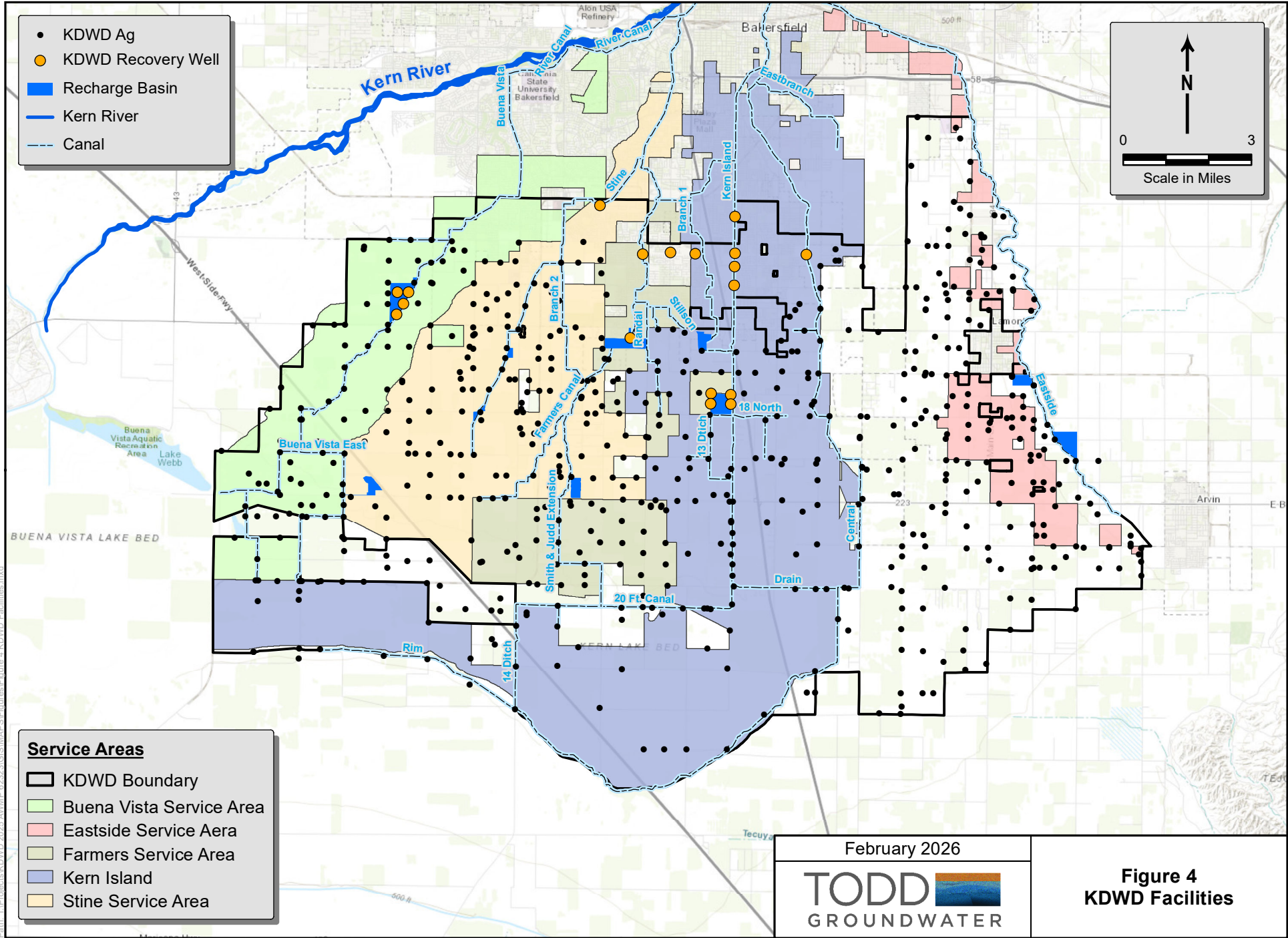
TODD 
GROUNDWATER

Figure 3
Municipal Water Suppliers near KDWD





- KDWD Ag
- KDWD Recovery Well
- Recharge Basin
- Kern River
- - - Canal

↑
N
↓

0 3

Scale in Miles

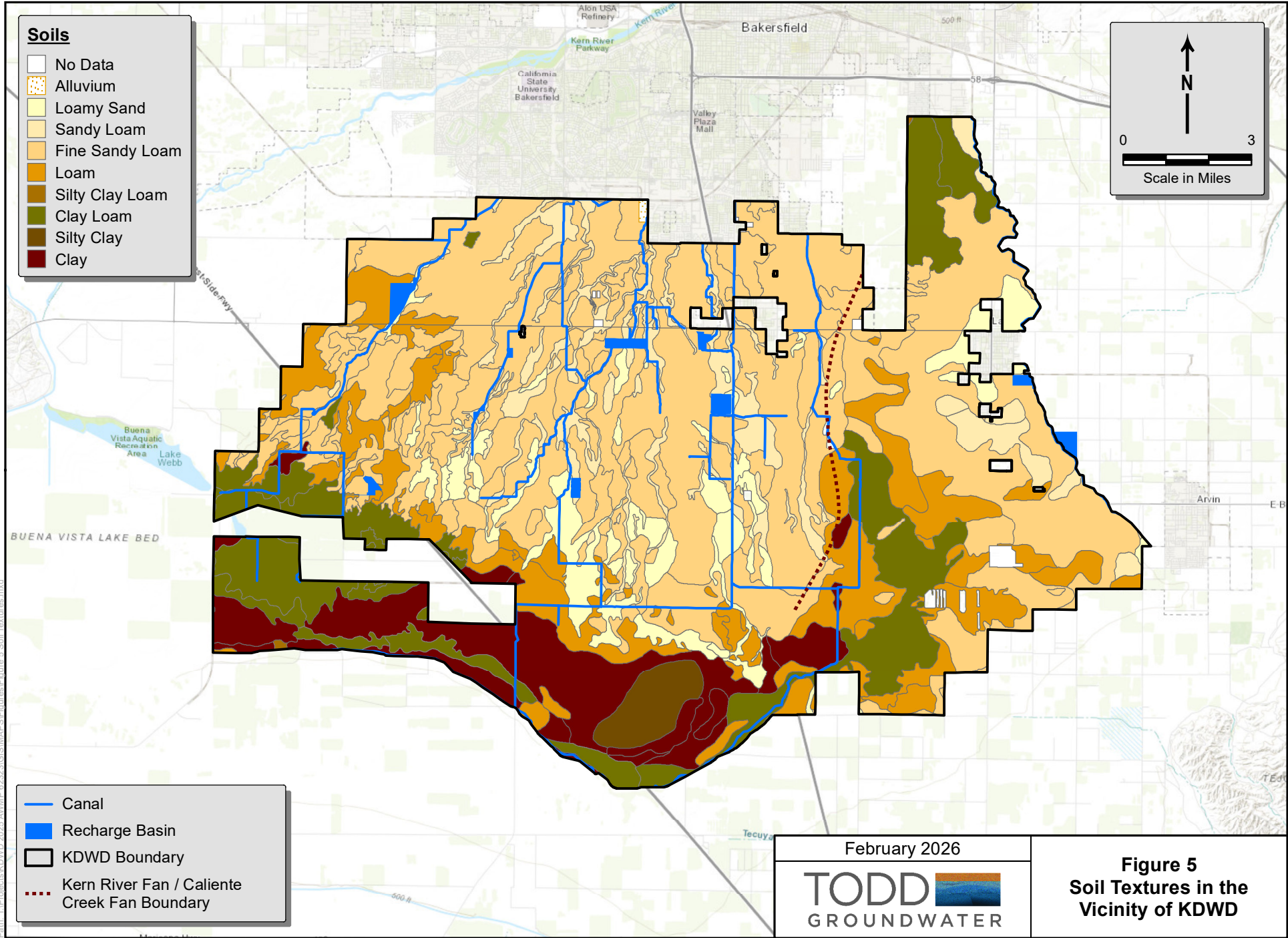
- Service Areas**
- ▭ KDWD Boundary
 - Buena Vista Service Area
 - Eastside Service Area
 - Farmers Service Area
 - Kern Island
 - Stine Service Area

February 2026

TODD **GROUNDWATER**

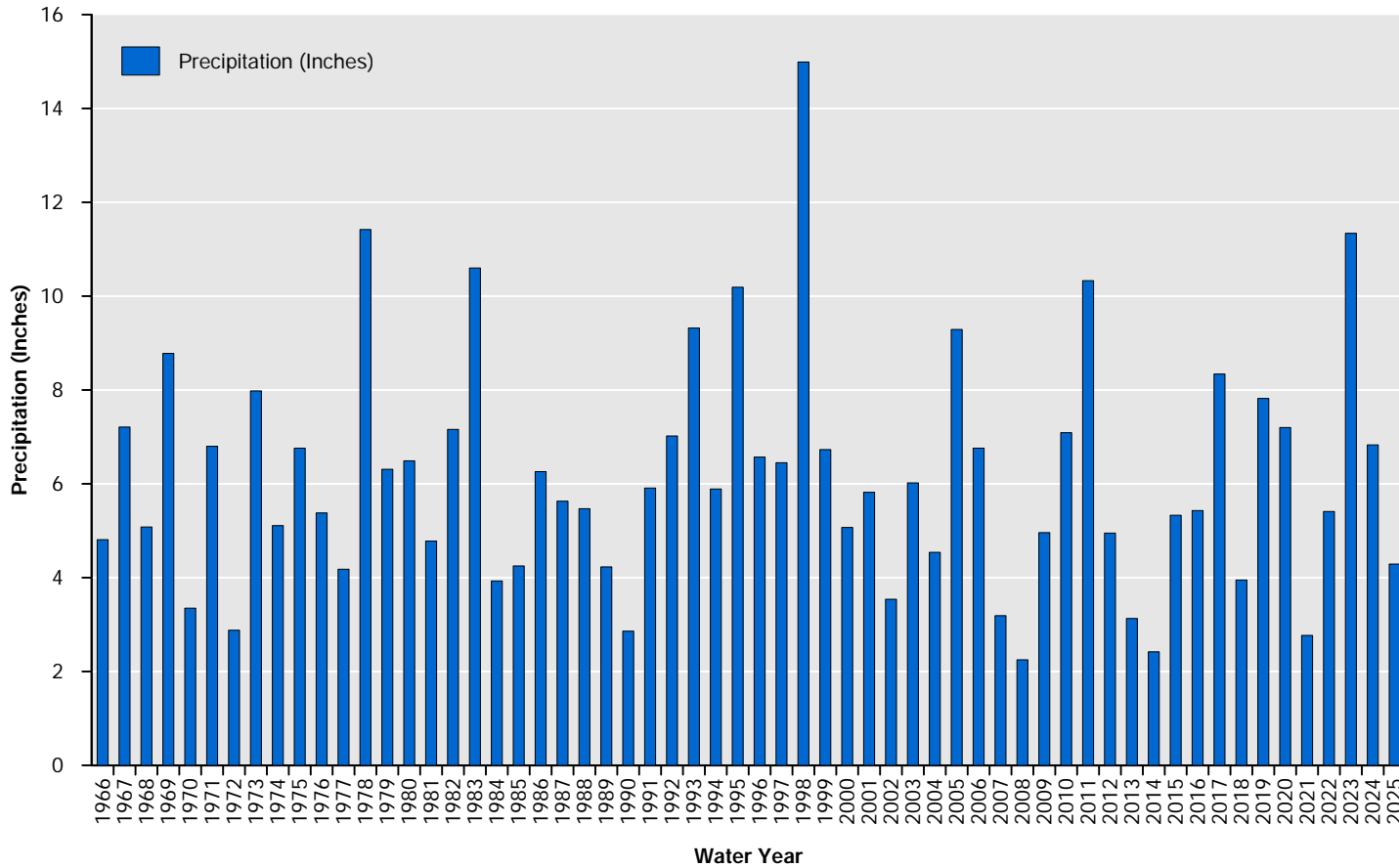
Figure 4
KDWD Facilities

Path: T:\Projects\KDWD 2025 AWM\622323\GIS\MAPS\Figures\Figure 4 KDWD Facilities.mxd



Path: T:\Projects\KDWD 2025 AWMP_62323\GIS\MAPS\Figures\Figure 5 Soil Textures.mxd

Precipitation at Bakersfield Meadows Field Airport Station
 WY 1966 - WY 2025

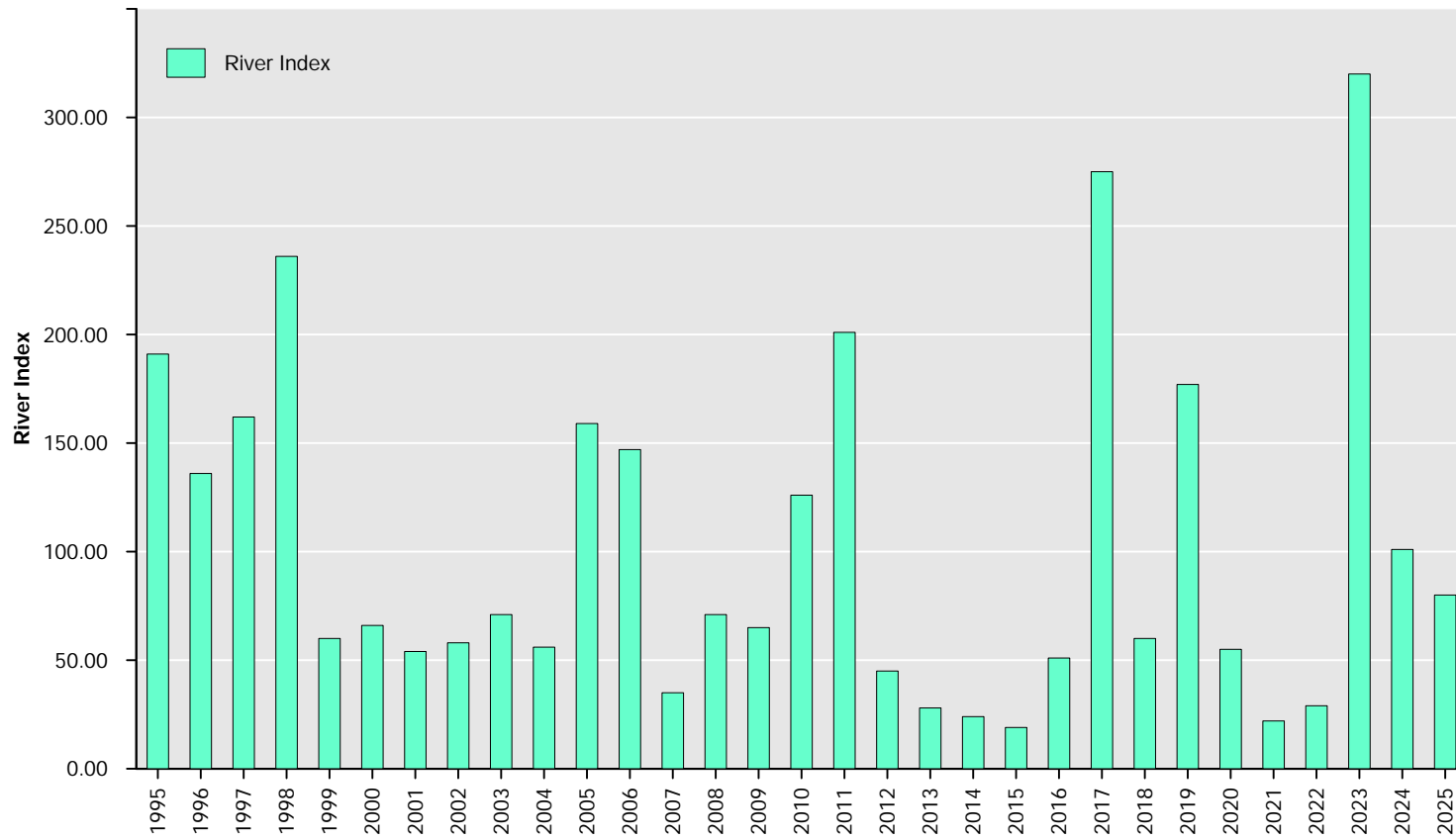


Path: T:\Projects\KDW\2025 AMWP-62323\GRAPHICS\Figure6_Precipitation_atL Bakersfield_Meadows_Field_Airport_Station.gpl

Source: NOAA, 2025 <----Correct?

February 2026
TODD 
 GROUNDWATER

Figure 6
 Precipitation at
 Bakersfield Meadows
 Field Airport Station



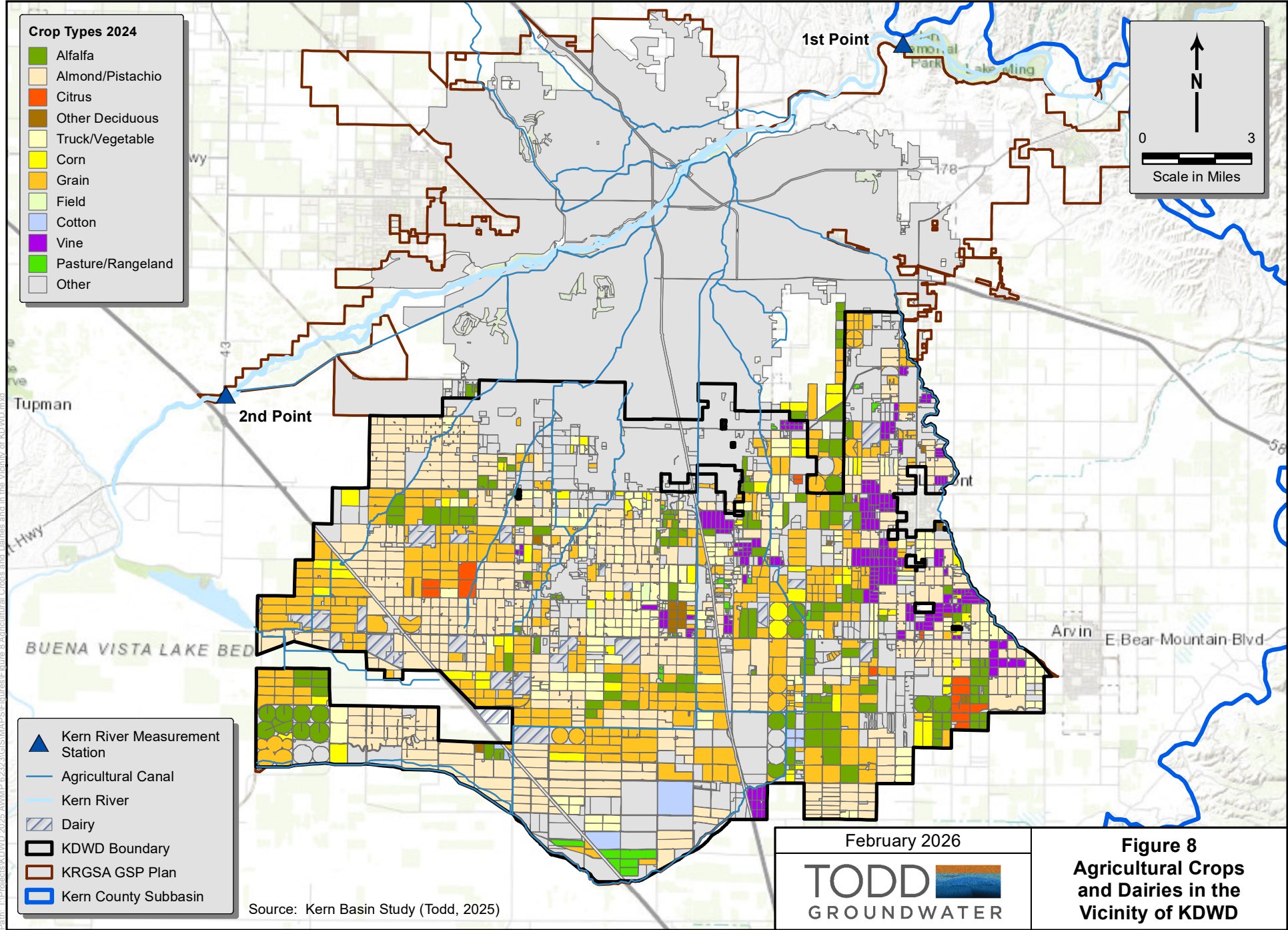
Data Sources:
Kern River Hydrographic Reports (COB)

February 2026



TODD
GROUNDWATER

Figure 7
Kern River Indices
1995-2025



Path: T:\Projects\KDWD 2025 AWMP 62323\GIS\MAPS\Figures\Figure 8 Agricultural Crops and Dairies and in the Vicinity of KDWD.mxd

APPENDIX A

AWMP Checklist

Appendix A AWMP Checklist

AWMP Section	Guidebook Location	Description	Water Code Section (or as identified)
1	1.4	AWMP Required?	10820, 10608.12
1, 3.2	1.4	At least 25,000 irrigated acres	10853
Not applicable	1.4	10,000 to 25,000 acres and funding provided	10853
1.3	1.4	April 1, 2021 update	10820 (a)
1.3	1.4 A.2	Added to the Water Code: <u>Added to the Water Code: AWMP submitted to DWR no later than 30 days after adoption; AWMP submitted electronically</u>	New to the Water Code: <u>10820(a)(2)(B)</u>
1	1.4 B	5-year cycle update	10820 (a)
Not applicable	1.4 B	New agricultural water supplier after December 31, 2012 - AWMP prepared and adopted within 1 year	10820 (b)
Not applicable	1.6, 5	USBR water management/conservation plan:	10828(a)
Not applicable	1.6, 5.1	Adopted and submitted to USBR within the previous four years, AND	10828(a)(1)
Not applicable	1.6, 5.1	The USBR has accepted the water management/conservation plan as adequate	10828(a)(2)
Not applicable	1.4 B	UWMP or participation in area wide, regional, watershed, or basin wide water management planning: does the plan meet requirements of SB X7-7 2.8	10829
1.1	3.1A	Description of previous water management activities	10826(d)
1.2, Table 1	3.1 B.1	Was each city or county within which supplier provides water supplies notified that the agricultural water supplier will be preparing or amending a plan?	10821(a)
1.2	3.2 B.2	Was the proposed plan available for public inspection prior to plan adoption?	10841
1.2.1, Appendix B	3.1 B.2	Publicly-owned supplier: Prior to the hearing, was the notice of the time and place of hearing published within the jurisdiction of the publicly owned agricultural water supplier in accordance with Government Code 6066?	10841
1.2	3.1 B.2	14 days notification for public hearing	GC 6066

AWMP Section	Guidebook Location	Description	Water Code Section (or as identified)
1.2, Appendix B	3.1 B.2	Two publications in newspaper within those 14 days	GC 6066
1.2, Appendix B	3.1 B.2	At least 5 days between publications? (not including publication date)	GC 6066
Not applicable	3.1 B.2	Privately-owned supplier: was equivalent notice within its service area and reasonably equivalent opportunity that would otherwise be afforded through a public hearing process provided?	10841
1.3	3.1 C.1	After hearing/equivalent notice, was the plan adopted as prepared or as modified during or after the hearing?	10841
1.2, Table 1	3.1 C.2	Was a copy of the AWMP, amendments, or changes, submitted to the entities below, no later than 30 days after the adoption?	10843(a)
1.2, Table 1	3.1 C.2	The department.	10843(b)(1)
1.2, Table 1	3.1 C.2	Any city, county, or city and county within which the agricultural water supplier provides water supplies.	10843(b)(2)
1.2, Table 1	3.1 C.2	Any groundwater management entity within which jurisdiction the agricultural water supplier extracts or provides water supplies.	10843(b)(3)
1.3	3.1 C.3	Adopted AWMP availability	10844
1.3	3.1 C.3	Was the AWMP available for public review on the agricultural water supplier's Internet Web site within 30 days of adoption?	10844(a)
1.2, 1.3, Table 1	3.1 C.3	If no Internet Web site, was an electronic copy of the AWMP submitted to DWR within 30 days of adoption?	10844(b)
1.5, 7.2	3.1 D.1	Implement the AWMP in accordance with the schedule set forth in its plan, as determined by the governing body of the agricultural water supplier.	10842
2	3.3	Description of the agricultural water supplier and service area including:	10826(a)
2.1.1	3.3 A.1	Size of the service area.	10826(a)(1)
2.1.1	3.3 A.2	Location of the service area and its water management facilities.	10826(a)(2)
2.1.3	3.3 A.3	Terrain and soils.	10826(a)(3)
2.1.4	3.3 A.4	Climate.	10826(a)(4)
2.2.1	3.3 B.1	Operating rules and regulations.	10826(a)(5)

AWMP Section	Guidebook Location	Description	Water Code Section (or as identified)
2.2.2	3.3 B.2	Water delivery measurements or calculations.	10826(a)(6)
2.2.3	3.3 B.3	Water rate schedules and billing.	10826(a)(7)
2.2.4, Appendix E	3.3 B.4	Water shortage allocation policies and detailed drought plan	10826(a)(8) 10826.2
3	3.4	Water uses within the service area, including all of the following:	10826(b)(5)
3.2	3.4 A	Agricultural.	10826(b)(5)(A)
3.3	3.4 B	Environmental.	10826(b)(5)(B)
3.4	3.4 C	Recreational.	10826(b)(5)(C)
3.5	3.4 D	Municipal and industrial.	10826(b)(5)(D)
3.6	3.4 E	Groundwater recharge, including estimated flows from deep percolation from irrigation and seepage	10826(b)(5)(E)
4	3.5 A	Description of the quantity of agricultural water supplier's supplies as:	10826(b)
4.1.1	3.5 A.1	Surface water supply.	10826(b)(1)
4.1.2	3.5 A.2	Groundwater supply.	10826(b)(2)
4.1.3	3.5 A.3	Other water supplies, including recycled water	10826(b)(3)
4.1.3	3.5 A.4	Drainage from the water supplier's service area.	10826(b)(6)
4.2	3.5 B	Description of the quality of agricultural waters suppliers supplies as:	10826(b)
4.2.1	3.5 B.1	Surface water supply.	10826(b)(1)
4.2.2	3.5 B.2	Groundwater supply.	10826(b)(2)
4.2.3	3.5 B.3	Other water supplies.	10826(b)(3)
4.2.4	3.5 C	Source water quality monitoring practices.	10826(b)(4)
5.1, 5.2, 5.3	3.6	Added to Water Code: Annual water budget based on the quantification of all inflow and outflow components for the service area.	Added to Water Code 10826(c)
5.4	3.7 C	Added to Water Code: Identify water management objectives based on water budget to improve water system efficiency	Added to Water Code 10826(f)
5.4.1	3.8 D	Added to Water Code Quantify the efficiency of agricultural water use	Added to Water Code 10826(h)
6	3.9	Analysis of climate change effect on future water supplies analysis	10826(d)
7	4	Water use efficiency information required pursuant to § 10608.48.	10826(e)

AWMP Section	Guidebook Location	Description	Water Code Section (or as identified)
7	4.1	Implement efficient water management practices (EWMPs)	10608.48(a)
7.1, Table 36	4.1 A	Implement Critical EWMP: Measure the volume of water delivered to customers with sufficient accuracy to comply with subdivision (a) of §531.10 and to implement paragraph (2).	10608.48(b)
7.1, Table 36	4.1 A	Implement Critical EWMP: Adopt a pricing structure for water customers based at least in part on quantity delivered.	10608.48(b)
7.1, Table 36	4.1 B	Implement additional locally cost-effective and technically feasible EWMPs	10608.48(c)
7.1, Table 37	4.1 C	If applicable, document (in the report) the determination that EWMPs are not locally cost-effective or technically feasible	10608.48(d)
7.1, Table 36	4.1 C	Include a report on which EWMPs have been implemented and planned to be implemented	10608.48(d)
7.1, Table 38	4.1 C	Include (in the report) an estimate of the water use efficiency improvements that have occurred since the last report, and an estimate of the water use efficiency improvements estimated to occur five and 10 years in the future.	10608.48(d)
Not applicable	5	USBR water management/conservation plan may meet requirements for EWMPs	10608.48(f)
8.1	6 A	Lack of legal access certification (if water measuring not at farm gate or delivery point)	CCR§597.3(b)(2)(A)
8.1	6 B	Lack of technical feasibility (if water measuring not at farm gate or delivery point)	CCR§597.3(b)(1)(B), §597.3(b)(2)(B)
8.1	6 A, 6 B	Delivery apportioning methodology (if water measuring not at farm gate or delivery point)	CCR§597.3.b(2)(C),
8.1	6 C	Description of water measurement BPP	CCR §597.4(e)(2)
8.1	6 D	Conversion to measurement to volume	CCR §597.4(e)(3)
8.1	6 E	Existing water measurement device corrective action plan? (if applicable, including schedule, budget and finance plan)	CCR §597.4(e)(4))

APPENDIX B

Notification Documentation

APPENDIX C

Resolution of Plan Adoption

APPENDIX D

KDWD Rules and Regulations

KERN DELTA WATER DISTRICT

**RULES AND REGULATIONS FOR THE
SALE AND DISTRIBUTION OF WATER**

These Rules and Regulations are established by the Board of Directors pursuant to California Water Code section 35423 which provides, in pertinent part, that the District may establish, print, and distribute equitable rules and regulations for the sale and distribution of water. The District Board may change these Rules and Regulations, without prior notice, at their sole discretion.

APPLICABILITY OF RULES

General: All water service and deliveries and other activities pertaining to the use of water provided by the District shall be subject to these Rules and Regulations of the District.

DISTRICT FACILITIES

District Facilities: The District facilities, including any and all diversion works, canals, ditches, headgates, weirs and any other property owned by the District shall be operated and maintained solely by the District or its authorized agent, permittee, or subcontractor. Such facilities shall be under the exclusive control of the Manager or those employees whom the Manager has designated with authority. The Manager is hereby authorized to do all acts necessary and proper to enforce these Rules and Regulations.

Private Facilities: The operation and maintenance of private ditches, laterals, or other waterworks which are not the property of the District shall be undertaken by the individual or group of individuals who own or use such facilities (community ditches). At all times such facilities must be kept in reasonable repair and reasonably free from weeds and/or other obstructions and must be of sufficient capacity to carry the amount of water which is to be delivered by the District. The District reserves the right to refuse water delivery in the case of a facility or community ditch that, in the sole discretion of the District, is deemed to be not

properly maintained.

Connections: All connections to District facilities shall be made in such a manner so as to prevent damage from occurring to the District's facilities, and so as to prevent water from customers' facilities from entering District facilities. Any connections to District facilities must be approved by the Manager of the District, or his designee. It is the responsibility of the customer to reach the District's canal right-of-way or easement with a suitable pipeline or ditch. In the event the customer is unable to obtain an appropriate easement for such pipeline, the District may, under terms and conditions acceptable to the District, assist in the acquisition of an appropriate easement. The District will install a turnout and pipe from the canal to the edge of the District's right-of-way or easement. For parcels of 40 acres or more, the District will pay for the aforementioned turnout and pipe at no cost to the customer. For parcels smaller than 40 acres, the customer or landowner will pay the fee.

Obstructions: No fences, gates, bridges, ditches, buildings, culverts, pipelines, roads, telephone poles, power poles, signs, vehicle parking, storage, any fertilizer tanks or tubs, trees, or any other obstructions shall be placed within, along, across, or upon any property or right-of-way of the District without the permission of the Manager and an encroachment permit from the District stating the conditions governing the obstruction. No fences, structures, rubbish, garbage or any other matter may be placed in, or allowed to be placed in or on any District canal or other District facility or property.

If any obstruction listed above, or any other similar obstruction necessitates maintenance or other remedial action being taken by the District, the customer, the landowner, or other responsible person shall, within ten (10) days of being notified of said expenses by mail, reimburse the District for any such cost of repairs or remedial actions.

APPLICATIONS FOR WATER

Applications: In order to obtain delivery of water, the owner of lands (or their agent) and the tenant or lessee of lands, (hereinafter referred to as "customer(s)") must complete, execute and file with the District, an application for water service which shall include the name and

addresses of the landowner and tenant or lessee, a description of the land to be irrigated, and any other information required by the District. If the owner of lands is not available or not willing to execute the application for any reason, a copy of an executed lease agreement and Vesting Deed, for said land, will take the place of the owner's execution and the tenant/lessee must also provide the District a letter allowing the District to lien the tenant's or lessee's land in the District if the tenant/lessee become delinquent in their payments to the District. Application forms shall be provided by the District. The District may fix the date prior to which applications for water for the ensuing irrigation season are to be received, and may require a cash deposit at the time of application for each acre for which application is made.

Land Transfers: When land is sold, a change of tenant occurs, or title is otherwise transferred to another party, the District shall be under no obligation to deliver water to such lands until a new application for water service is properly completed and filed with the District.

Authority of Applicant: District shall not be obligated to provide water service pursuant to any application for water service, or otherwise, unless and until District is provided, upon request, verification acceptable to the District that applicant has authority to bind the landowner and/or tenant for charges associated with water deliveries by District and for any other charges or expenses associated with these Rules and Regulations. Any such verification shall be in the form prescribed by District.

DELIVERY

Delivery Orders: All orders for water delivery or shutoffs must be placed by the customer, or his designee, either by telephone, or in writing no later than 10:30 a.m., and twenty four (24) hours prior to the requested delivery or shutoff. Shutoff orders not placed within the minimum 24 hour period will be charged for a full 24 hour day for "Off Without Notice". Delivery shall be made as requested by customer, provided that sufficient water is available to permit such delivery and provided that the capacity of the District's facilities has not previously been committed to delivery of water to other customers. The District may require payment of water charges prior to the delivery of any water ordered. Water delivery problems must be

called into the Dispatch office immediately. Problems turned in after the day of occurrence may not be acted upon. Customer shall be responsible for the payment of water ordered until the procedures and time requirements described above have been complied with.

Minimum Order: Customers must order a minimum of one half (1/2) cubic foot per second for at least twenty four (24) hours (1 acre foot). Delivery orders of less than this amount, or in amounts not readily measurable or controllable, will not be accepted or processed by the District. Any water ordered by a customer must be accepted by the customer on a continuous basis until the entire amount so ordered or deliverable has been delivered, unless the proper turn-off procedure and time requirements thereof have been complied with. All water shutoff times will be the same as the start time, unless previously specified by the customer and agreed upon by the District. There is a grace period for water overruns of up to four (4) hours, over four (4) hours will be charged one half (1/2) day, over six (6) hours will be charged for one (1) full day of water.

Non-acceptance: A customer who fails to accept delivery of water, which has been ordered, and which the District is prepared to deliver, shall be charged for the amount of water so ordered, unless the proper shutoff procedure and time requirements thereof have been complied with. In the event of breaks in private ditches, laterals, or other private water-carrying facilities, or other emergency circumstances or conditions where it becomes necessary for the customer to turn the delivered water back into the District's facilities, the District must be notified before the water is turned back to the District (Dispatch number is 661-834-4653 and is answered 24 hours a day, either by the Dispatcher or the answering service) and the District must consent to such return. The customer shall be responsible for any and all loss or damage caused by the turning back of water into the District's canal if said water causes any loss or damage. The customer shall not be responsible for payment of water not accepted if non-acceptance is the result of an unavoidable and unanticipated emergency. It is within the Manager's sole discretion to determine whether or not an unavoidable and unanticipated emergency situation has occurred.

Condition of Property: Customers must have their land and facilities in reasonable condition in order to care for and accept delivered water without undue waste or damage.

Reasonable care in applying the water must also be undertaken in order to eliminate excessive drainage.

Water Level: The District shall not be required to raise water levels to an excessive height in any canal or other facility of the District in order to provide water service to a customer.

Priority: At such times as the District's facilities are being used to capacity, water will be delivered as far as practicable to consumers on those canals in order of priority of water orders.

Split Heads: In the event two or more customers are supplied water through the same turnout ("split head"), the District may require that all customers being served by a combined turnout furnish to the District, in a form suitable to the District, an agreement executed by each customer which may include, among other provisions, terms regarding acceptance of water delivery through the turnout, granting of easements among the customers, and authorization for one individual to represent the others in all matters relating to delivery of water through the turnout. It is the customers' responsibility to make sure the water is divided appropriately.

Temporary Deliveries: Delivery of water for unscheduled, temporary, or special purposes may be made in the manner and upon such terms and conditions as are required by the Manager, or his designee.

Transferability: No water delivered or deliverable by District, or any rights that may pertain to such waters or to the delivery thereof may be permanently transferred from one customer to another or from one property to another. Monthly or annual transfers of District water service is permitted under the following circumstances and with approval from the Board or General Manager upon acceptable terms and conditions:

(a) Kern River Utility water shall only be delivered within the water right Service Area of origin, except during mandatory release.

(b) Balfour Guthrie, Bloomfield, or Eastside Contract water entitlements shall be delivered to their respective contract lands only.

(c) Transfers of Kern River prorrations and/or service rights between eligible recipients may be permitted within the same Service Area. Transfers of State Water allocations are permitted within the District with no Service Area restrictions; however, the original State Water Rate will follow the State Water delivery.

(d) Transfers by the original allocatee into a pool established by the District for general reallocation are permitted.

(e) During prorroration periods, all transfers shall be subject to all of these Rules and Regulations and:

(1) Parties to the transfer will notify the Dispatcher. No water may be transferred without a written Transfer Agreement between the parties on file with the District.

(2) Payment for the transferred water will be the responsibility of the receiving party.

(3) From time to time the Board of Directors will review the status of unused allocations and, at their discretion, may recall such supplies as they deem to be prudent and practical.

(4) Transfers may not adversely affect the prorrations or canal capacity of other Customers.

Exchanges: Exchanges may be permitted on a case by case basis subject to Manager's approval in emergency situations, and subject to Board approval under non-emergency conditions. The term "exchange" refers to the substitution of any water supply available to the District or any person for use by any person, provided however, the recipient pledges in good faith to repay the party or entity of origin at the earliest practical point in time. Any such exchange shall be conditioned upon terms and conditions deemed appropriate by the Manager or the Board.

District Well Water: District Well Water, produced by District owned wells, will not be available for use by individual customers.

Customer Well Water: District facilities may be used to transport such water upon terms and conditions deemed appropriate by the Manager, including but not limited to:

(a) Unused capacity is and is anticipated to be available in the District's facility.

(b) Prior to delivery into a District facility, Customer shall install a District approved flow meter, in addition to any other turn-in delivery facility deemed appropriate by the District, in accordance with District specifications. Cost of the meter and its installation will be paid by the Customer.

(c) Delivery of Customer Well Water into the District's facility may be terminated at any time, and without notice, by the District, in its sole discretion.

(d) Customer shall provide District ingress and egress to and from the groundwater well location site and any other areas deemed relevant by the District so as to account for and monitor the delivery of Customer Well Water to the facility.

(e) The Customer's well site may be labeled by the District for District reference purposes.

(f) Scheduling of the Customer's Well Water pump-in shall follow the same procedures as ordering for turnouts (See Rules and Regulations section "Delivery"). Customer shall provide the District Dispatch as much notice on a proposed well turn ON and/or turn OFF as possible, with a minimum notice of 24 hours.

(g) Customer, and NOT District personnel, shall operate the Customer's well. Customer shall only make flow changes upon prior approval of the District. The Customer shall call and notify the District Dispatch at the exact time of turn ON, turn OFF, or change in flow and provide a corresponding meter reading.

(h) Customer shall have the sole responsibility to maintain the well and related "turn-in" facilities (i.e. check oil, water levels, operate valves, etc.)

(i) District staff will endeavor to read meters daily, and upon each ON, OFF, or change of flow.

(j) District staff will endeavor to verify the meter is measuring accurately (i.e. full pipe flow). District may require the Customer to have the meter tested for accuracy and/or repaired/recalibrated, at Customer's expense.

(k) Customer Well Water may only be transported within the District's Groundwater Zone of Benefit of origin of said Well Water (Zone of Benefit may differ from the Service Area).

(l) Customers may only transport Customer Well Water in District facilities within a three mile radius of the well. The District's Wheeling Rate for this transportation is \$2.50 per acre-foot, and is subject to change by the Board of Directors. If the District conveyance facility

is not in operation, and if approved by the District, customers may transport Customer Well Water in District facilities (the three mile radius still applies). Customers must pay all costs and expenses through District facilities.

(m) Customers must provide annual water quality tests for Well Water pumped into District facilities. Constituents to be tested for will be determined by the District and will include at a minimum an Irrigation water quality test. The District may also require more frequent tests and a full Title 22 or other test(s) if District water is being delivered to another agency, or upon other circumstances as determined by the District.

(n) The constituents of the water quality tests may change from time to time as determined by the District Manager.

(o) Customer shall indemnify, defend, and hold the District harmless from any and all claims and liability related to delivery of the Customer's Well Water quality into District facilities, including but not limited to any and all effects on water quality, and damages related to delivery into District facilities, upstream or downstream of the turn in.

(p) The Customer must enter into and sign the District's Well Water Pump-In Agreement.

CONTROL

Hazards:

(a) No customer shall use, cause to be used, or suffer to be used on lands located within the District, water distributed by the District in any manner which creates, or is likely to create, an unsafe or hazardous condition, and the District shall have the authority to immediately cease water deliveries where an unsafe or hazardous condition is known to exist, and the delivery will not restart until the District is satisfied that the condition has been rectified.

(b) If a violation of subparagraph (a) is found to exist, the District may discontinue service without notice if the unsafe or hazardous condition creates a clear and imminent danger to the public health, welfare, or safety such that immediate action is required in order to avert or mitigate said danger. Immediately thereafter, the District shall notify the customer of the reasons for the discontinuance and the corrective action which must be taken by the customer before

service will be restored. Such notification shall be in writing and shall be personally served upon the customer or mailed to the customer at his last known address. A copy of such notice shall also be left in a conspicuous place on the affected premises. If the owner of the affected premises differs from the customer, a copy of such notice shall also be personally served upon the landowner or mailed to the landowner at his last known address.

(c) In all other cases in which a violation of subparagraph (a) is found to exist, the District may discontinue service after the District has given the customer at least five (5) days' written notice of such intention. Said notice shall include the reasons for the proposed action, a description of the corrective action which must be taken by the customer in order to avert discontinuance of service, and the date on which the District proposes to discontinue the service. A copy of such notice shall be personally served upon the customer or mailed to him at his last known address. A copy of such notice shall also be left in a conspicuous place on the affected premises. If the owner of the affected premises differs from the customer, a copy of such notice shall also be personally served upon the landowner or mailed to the landowner at his last known address.

Diversions: No water delivered by the District shall be diverted or allowed to be diverted by a customer at any time from lands within the District service area to lands outside of the District service area, from one improvement District to another, or to lands for which no application for water service has been filed with the District, without the prior consent of the Board of Directors.

Control Outside District Facilities: District shall not be responsible for the control, carriage, handling, use, disposal or distribution of water delivered to a customer whenever such water is outside of facilities then being owned, operated and maintained by District. Customer agrees to indemnify and shall hold harmless the District and its officers, agents, and employees from any and all loss, expenses, damage, liability, claims or causes of action of every nature whatsoever, for damage to or destruction of property of whatever nature, including District's property, or for injury to or death of persons, in any manner arising out of or incidental to the control, carriage, handling, use, disposal or distribution of water outside such facilities.

Drainage: Except for drains and water ways built, or formally accepted, by the District expressly for the conveyance of drainage water and/or storm water, no person will be allowed to drain irrigation or other water into or upon District-owned property or facilities, unless consent to such drainage has been obtained from the Manager. Such consent may only be given on a case-by-case basis.

Landowner Wheeling Rates: Upon terms and conditions acceptable to the Manager, an in-District landowner may bring outside surface water into the District for delivery in the District using District facilities. Kern Delta must review and approve the request on a case by case basis. If the canal is running and there is available capacity, the Wheeling Rate is \$2.50 per acre-foot and no water losses (floated on District water). If the canal is dry, the Wheeling Rate is \$2.50 per acre-foot for all water diverted into District facilities. All water losses associated with this wheeling becomes the property of the District for any legal use and/or purpose.

3rd Party Wheeling Rates (Non-District Landowner or Water User): Upon terms and conditions acceptable to the Manager, A 3rd party may wheel water in Kern Delta District facilities, if capacity is available, and under the following conditions:

- (a) Kern Delta staff must review and approve the request.
- (b) Administration fee of \$1000.00. (Non-refundable)
- (c) A \$12.50 per acre-foot Wheeling Rate. (No water losses if the canal is operating)
- (d) A \$12.50 per acre-foot Wheeling Rate. (Plus water losses if the canal is dry) All water losses become the property of Kern Delta for any legal use and/or purpose.
- (e) Kern Delta personnel will operate District facilities at all times.

WATER SHORTAGE

Water Shortage: In the event of actual or perceived water shortages, as determined by the District, the District may prorate the anticipated total deliverable amount of water among District customers. Proration may be calculated on a monthly basis or by using any other time period, and shall be calculated based upon (1) anticipated total deliverable water to specific areas within the District Service Areas, (2) total acres within those Areas, (3) acres owned or operated by each customer within those Areas, and (4) any other equitable factors deemed necessary and appropriate by the District.

LIABILITY

Negligence: The District shall not be liable for any damage caused by the negligence, carelessness, or intentional acts or omissions of any customer in the use of water, or for the failure on the Customer's part to maintain any ditch, lateral, or other facility not owned and controlled by the District. The Customer shall not be liable for any damage caused by the negligent act or omission of the District.

Water Availability: The District shall not be responsible or liable for any damage to crops resulting from insufficient water supply to the crops, regardless of the cause of the insufficiency.

Water Orders: Customer shall be responsible for any loss, damage, or expense caused by customer not using the full amount of water ordered by the customer.

Damage to District Facilities: If any damage whatsoever is done to District facilities by customers and/or their agents, including damage caused by moving farm equipment, livestock, or otherwise, it shall be the responsibility of the customer to pay for any such damage. District shall be entitled to make any necessary repairs and customer shall be responsible for paying the costs of any such repairs within ten (10) days of being notified by mail of such costs.

DISCLAIMER

The District may sell and distribute water for any legal purpose. Any water purchased by a customer shall be used for irrigation purposes only unless otherwise allowed in these Rules and Regulations or by other agreement. District waters include, but are not limited to, Kern River Water, State Water Project (SWP) water, well water, storm water runoff, exchange water, transferred water, and other 3rd party waters. Water furnished by the District is unfit for human consumption and may be unfit for other purposes, and is not warranted by the District. The District hereby expressly disclaims any and all warranties, including merchantability, either

express or implied, as to the fitness or suitability of water for any purpose whatsoever. The District does not represent, express or imply as to the availability, condition, quantity, quality or suitability of water at any time for any purpose. The District does not represent, express, or imply as to the integrity, availability, capacity, condition, quality, or suitability of the District's facilities at any time or for any purpose.

The District treats canals, waters, and other District facilities with chemicals, herbicides, surfactants, and other materials. Customer assumes all risks associated with the use of said water and any consequences thereof, except for any negligent act of the District.

WATER RATES, BILLS, AND PAYMENT

Rates: Water rates, standby charges, equalization charges, and any other charges permitted by law shall be determined from time to time by the Board of Directors of the District.

Billing: Invoices for water service shall normally be mailed to the person designated in the application for water service no later than the tenth of each month for those water deliveries which occurred during the preceding month. Payments are to be made at the District offices, located at 501 Taft Highway, Bakersfield, California 93307, and must be paid upon receipt. All water bills must be paid no later than the last business day of the month the bill is issued.

Delinquent Accounts: A Water Account will be considered delinquent if billings and invoices are not paid in full on or before the last business day of the month in which the invoice was mailed to the Customer. Delinquent Water Accounts will be charged interest at the rate of 1.5% per month until paid. An Assessment Account will be considered delinquent if the Assessment is not paid in full on or before June 30th of the year assessed. Delinquent Assessment Accounts will be charged with a 10% penalty on the delinquency date and interest at the rate of 9% per year until paid. No water will be delivered to a customer if their water account becomes delinquent or the property assessments become delinquent.

Landowner Responsibility: The landowner is ultimately responsible for and shall be liable for all water charges and other costs invoiced by the District which have been incurred for

water services, water deliveries, or otherwise incurred pursuant to these Rules and Regulations, or as allowed by law.

Requests Re: Equalization Charge: In the event a customer owns lands which are not farmed, nor intended to be farmed, nor anticipated to be farmed, but who is charged the District's Equalization Charge upon said non-farmed land, the customer may request of the District, prior to the imposition of such charge, in a form prescribed by the District, to have the equalization charge against said non-farmed property withdrawn and/or cancelled. The District may approve the request, in its sole discretion, upon such terms as it deems appropriate.

COMPLAINTS/ERRORS

Complaints: Complaints of any kind against the District must be made in writing to the Manager immediately after the acts complained of have occurred. Water delivery problems must be brought to the attention of the District by calling the Dispatch office immediately. Problems reported after the day of occurrence may not be acted upon.

Errors: All claims for errors in the measurement of water must be made in writing to the Manager within 30 days after the mailing of the invoice containing the error. If no claim is made within that time, the measurement as reported by the District personnel shall be the basis for the water charge.

FACILITY MODIFICATIONS

Customer Requests: Any customer desiring a structural change, realignment, or modification of any canal or District facility may petition the Board of Directors, in writing, for permission to make such change or realignment. Any such petition must be accompanied by a map showing the desired changes, and customer shall be required to pay for any such changes in advance. Any modifications or changes, if allowed by the District in its sole discretion, shall be conditioned upon terms and conditions acceptable to the District and shall, upon acceptance, become the property of the District.

TERMINATION OF SERVICES

Waste: Water delivery or services may be discontinued to any customer found to be wasting water either willfully, carelessly, or as a result of defective or inadequate ditches, laterals, pipelines, or inadequately prepared land or improper management, and said water delivery will not be resumed until such conditions are corrected to the satisfaction of the District. However, the customer shall in no way be relieved of any responsibility for payment of any charges or obligations by reason of such discontinuance of water service.

Violations of Rules and Regulations: Water delivery or services may be discontinued by the District for any violation of these Rules and Regulations by the customer. Water delivery will not be resumed until the customer complies with all the Rules and Regulations of the District. However, the customer shall in no way be relieved of any responsibility for payment of any charges or obligations by reason of such discontinuance of water service.

Maintenance: Water delivery or services may be discontinued by the District in order to perform maintenance, modifications, or construction of canals or other facilities or for any other necessary purpose(s), at any time or times. District facilities may be drained of water during shut down periods. Customers receiving usable water during a drain down will be charged normal and customary rates for water delivered. District staff may make arrangements to drain canals for maintenance or emergencies at no cost to customers or landowners.

Delinquency: Water delivery or services shall be discontinued to any customer or property for which there exists a delinquency in the payment of any charges or assessments. Water service shall be resumed only upon full payment of all delinquencies, including water charges, assessments, penalties, and interest.

Non-liability: In any event of water service termination, District shall not be responsible or liable for any damage occasioned by such discontinuance of water service.

ENFORCEMENT

Manager's Responsibility: The Manager of the District shall be responsible for the enforcement of these Rules and Regulations. Nothing in these Rules and Regulations are intended to, nor shall have the effect of limiting any rights granted the District under any laws of the State of California. The failure or refusal of the Manager to enforce any provision of these Rules and Regulations shall not constitute a waiver of the right to enforce any or all of the provisions contained herein at any subsequent time for the same violation or for any other.

Records: In administering these Rules and Regulations, the District will rely upon the Kern County Assessment Roll, last equalized, and upon District records regarding matters of title to land, addresses of landowners, authorizations, appointments, designations and the like filed with the District by a customer. These records shall be considered continuing representations upon which the District is entitled to rely unless and until the District has received actual written notice of any changes from the customer, the transferee, or the County of Kern.

Unauthorized Tampering: No person shall molest, tamper with, or interfere with structures, meters, or devices used for the delivery of water. In this connection, attention is directed to **California Penal Code section 592** which provides as follows:

"(a) Every person who shall, without authority of the owner or managing agent, and with intent to defraud, take water from any canal, ditch, flume, or reservoir used for the purpose of holding or conveying water for manufacturing, agricultural, mining, irrigating, generation of power, or domestic uses is guilty of a misdemeanor.

(b) If the total retail value of all the water taken is more than four hundred dollars (\$400), or if the defendant has previously been convicted of an offense under this section or any former section that would be an offense under this section, or of an offense under the laws of another state or of the United States that would have been an offense under this section if committed in this state, then the violation is punishable by imprisonment in the county jail for not more than one year, or in the state prison.

ACCESS

Customer Property: The authorized agents or employees of the District shall have free

access at all times to all lands irrigated from the District facilities, for the purpose of operation or maintenance of District facilities or for the purpose of examining the ditches and flows of water therein and for the further purposes of ascertaining the acreage of crops on lands irrigated or to be irrigated, or for any other purposes reasonably related to conducting District business or enforcing these Rules and Regulations.

District Facilities: No customer shall use or enter upon any District facilities, property, or rights-of-way without the express permission of the Manager. Prior to sampling or testing of District's water supplies in District facilities, an encroachment permit from the District stating the conditions governing the same shall be obtained. No chemicals may be added by customers, private parties, or their agents to waters within District facilities, rights-of-ways, or easements. Suitable measures to prevent back flow into the District's facilities shall be provided as required by the District.

MODIFICATION OF RULES

Board of Directors: These Rules and Regulations shall become effective when adopted by the Board of Directors of the District and may be amended or repealed, in whole or in part, from time to time within the sole discretion of the Board of Directors.

Special Conditions: The Board of Directors may authorize a temporary variance from these Rules and Regulations to meet any special conditions as deemed appropriate by the Board of Directors.

SEVERABILITY

Invalidity: If any provision of these Rules and Regulations, or the application thereof to any person or circumstance, is held invalid, the remainder of these Rules and Regulations and the application of its provisions to the same or other persons or circumstances shall not be affected thereby.

ADOPTED 1/19/2010
AMENDED 4/21/2015

Captions: All captions accompanying these Rules and Regulations are for convenience and ease of reference and are not intended to limit the applicability of any rule or regulation.

APPENDIX E

KDWD Drought Plan

KERN DELTA WATER DISTRICT



Drought Plan

February 24, 2026

Table of Contents

1	Introduction	1
1.1	Background.....	1
1.2	Purpose.....	1
2	Drought Resilience Planning	2
2.1	Data and Indicators	2
2.2	Drought Vulnerability	3
2.3	Plans for Increased Drought Resilience.....	4
2.3.1	Technology and Information	4
2.3.2	Additional Water Supplies.....	4
2.3.3	Other Actions to Improve Drought Resilience Planning.....	5
3	Drought Response.....	7
3.1	Water Shortage Indications.....	7
3.2	Drought Response Stages of Actions and Declaration of a Water Shortage	9
3.3	Water Shortage Allocations and Response Actions	11
3.4	Enforcement and Appeals	12
3.5	Monitoring and Evaluation.....	12
3.6	Communication Protocols.....	13
3.7	Financial Impacts.....	13
4	References.....	14

List of Tables

Table 1.	Phase One Project Summary for KRGSA GSP	6
Table 2.	Water Shortage Indicators for KDWD	8
Table 3.	KDWD Wells with Sustainable Management Criteria in the KRGSA GSP Monitoring Well Network	9

1 INTRODUCTION

The foundation of Kern Delta Water District’s (KDWD or District) Drought Plan consists of optimizing conjunctive management, groundwater banking, and best use of additional source water (such as recycled water) as available. In brief, District landowners are incentivized to rely on surface water resources when available to preserve groundwater resources for use in drought conditions. Groundwater banking consists of numerous strategies including intentional recharge along unlined canals, in-District banking for out-of-basin participants, and out-of-District banking for both recovery and overdraft protection. In addition, the District incorporates out-of-basin storage in Isabella Reservoir. Finally, the District is active in optimization of all local water sources obtained through cooperative transfers, exchanges, and agreements with other water districts and even shared recharge facilities. Incorporation of these policies and strategies as components of the Drought Plan are summarized in the sections below.

1.1 BACKGROUND

On April 1, 2015 Governor Brown issued Executive Order B-29-15, mandating agricultural water suppliers to prepare a detailed Drought Plan describing actions and measures taken to manage water demand during drought. The 2018 Water Conservation Legislation (AB 1668) added the Drought Plan requirement as part of the AWMP contents and includes details on what must be included. The new requirements include both resilience planning and drought action/response planning.

This Drought Plan for the KDWD builds upon existing KDWD shortage allocation policies and describes the determination of available water supply, drought responses, and water shortage impacts.

KDWD was formed in 1965 to provide a contracting agency for importing State Water Project (SWP) water through the Kern County Water Agency (KCWA) and to protect the existing Kern River water rights of the landowners within its boundaries.

1.2 PURPOSE

The purpose of this Drought Plan is to detail how KDWD prepares for droughts and manages water supplies and allocations during drought conditions. It fulfills requirements of Executive Order B-29-15 and 2018 Legislation, including addition of resilience and response planning components.

2 DROUGHT RESILIENCE PLANNING

2.1 DATA AND INDICATORS

KDWD manages three primary water sources – local surface water, groundwater, and imported water – conjunctively for beneficial uses in the District. Kern River water is made available to agricultural and M&I customers to supplement groundwater pumping by individual water users. The District also recharges water for the City of Bakersfield (City or COB), California Water Service-Bakersfield District (Cal Water), Greenfield County Water District (Greenfield CWD), and Lamont Public Utility District (Lamont PUD) by selling them canal operational losses (canal seepage). In addition, KDWD has secured imported SWP water rights and obtains other water sources as available through various contracts and exchanges.

Monitoring of hydrologic conditions such as rainfall, Kern River flows and groundwater levels are key components of determination of available water supply. KDWD conducts annual or more frequent evaluations of supply availability which includes review of:

- Rainfall records, including patterns and projections.
- Kern River flow indices and streamflow measurements.
- SWP water delivery projections.
- Groundwater elevation trends.

Rainfall is measured at the Bakersfield Meadows Field Airport Station (#040442) and long-term average precipitation at is approximately 6 inches per year (NOAA, 2019). Because most of the rain occurs outside of the primary irrigation season and varies significantly from year to year, precipitation is not a main source of agricultural supply. An analysis suggested that an average of approximately 20 percent of total rainfall could be used effectively by crops (Todd, 2013).

Kern River flow is a better indicator of hydrologic conditions than rainfall because the river is the primary surface water supply for the region. Because Kern River headwaters are in the Sierra Nevada more than 50 miles east of KDWD, precipitation patterns that control river flow are not always consistent with rainfall patterns on the valley floor. Kern River flows are typically represented by the river index, a calculated value that relates annual flow to the long-term average. The river index is a daily river model developed by the City of Bakersfield using monthly forecasts from the California Department of Water Resources (DWR). Diversions of river flow occur on a daily basis through a cooperative effort and are summarized in annual Kern River Watermaster reports.

Each year, the DWR announces SWP Table A allocations which inform water contractors' SWP deliveries of available Table A, Carryover, and Article 21 water. This information is on DWR's website: <https://water.ca.gov/Programs/State-Water-Project/Management>.

KDWD measures some wells for groundwater levels monthly and other wells are only measured in the Spring and Fall. KDWD monitors 18 wells in the Agricultural Management Area (MA) as part of the Kern River Groundwater Sustainability Agency. KDWD also monitors water levels as part of additional District-specific programs involving more than 60 wells.

2.2 DROUGHT VULNERABILITY

KDWD has a diverse portfolio of supplies to improve supply reliability and reduce vulnerability to drought. First, it has Kern River water rights. Flows in the River consist of regulated and managed releases from Lake Isabella. Its Water Allocation Plan (WAP) (Todd, 2011) was developed to optimize the use of water available to the District, provide operational flexibility, and maximize the beneficial use of its remaining Kern River water rights. Second, it utilizes groundwater to supplement surface water supplies and rainfall. Its Groundwater Management Plan (GWMP) (Todd, 2013) provides local groundwater management and monitoring for its portion of the underlying groundwater resource. The Groundwater Sustainability Plan (GSP) for the Kern River Groundwater Sustainability Agency¹ (KRGSA) (Todd, 2020) and subsequent annual reports are prepared and updated to cooperatively manage shared groundwater resources in a sustainable manner. Furthermore, the District also has SWP water, recycled water, and leave behind water from groundwater banking in its supply portfolio.

Several factors enhance KDWD’s resilience to drought conditions. Most notable are the conjunctive management programs including conveyance, distribution, recharge and use in the KDWD and surrounding area. Examples of local conjunctive use include (but are not limited to) the following:

- Storage space in Isabella Reservoir is managed for Kern River water and, by exchange, imported SWP water.
- Recycled water is used for recharge and irrigation.
- Kern River water is intentionally discharged to unlined canals to promote surface water seepage and groundwater recharge.
- Recharge basins and banking programs in the area and managed recharge in the Kern River Channel.
- Water banking programs are active with participation by local agencies and out-of-basin agencies.

Recognizing the intensity of local conjunctive use, recharge, and banking operations, numerical models have been developed and/or applied by local agencies for specific purposes, including the water budget and water management programs for the KRGSA GSP.

¹ KRGSA member agencies are KDWD, City of Bakersfield, Kern County Water Agency (KCWA) Improvement District No. 4 (ID4), North of the River Municipal Water District/Oildale Mutual Water Company (NORMWD/OMWC), and East Niles Community Services District (ENCSD).

The water resources programs are coordinated among local agencies for optimized use of water resources. Kern River water and SWP are managed through exchanges and sales to others. Banking programs, including intentional recharge along canals, provide flexibility for storing water when available and recovering water for use during times of water scarcity. These programs also incorporate monitoring networks to measure performance and avoid adverse impacts. These issues are also being addressed through regional coordination of sustainable management criteria for the entire Kern County Subbasin.

2.3 PLANS FOR INCREASED DROUGHT RESILIENCE

KDWD actively reviews and updates its drought resilience planning. This is accomplished through new technologies, additional supplies, and other actions, specifically the programs associated with the KRGSA GSP.

2.3.1 Technology and Information

The District incorporates new technology and available water supply and use information when such technology and information will be beneficial for the long-term supply and demands within the District. The District is a key member of the KRGSA and is actively involved in expanded monitoring of the water supplies within the KRGSA area. The monitoring network is described in detail in the KRGSA GSP Section 6. This information will demonstrate progress toward groundwater sustainability objectives and monitor changes in groundwater conditions and quantify annual changes in the water budget components.

The District is considering the initiation of local evapotranspiration (ET) monitoring stations that will provide field-specific data for crop consumptive use. These stations allow for a more accurate documentation of crop ET and offer potential improvements in water use efficiency.

In addition, the KRGSA is working on policies and procedures for a groundwater extraction monitoring program that may incorporate features such as meters, telemetry, and built-in data loggers. The District is participating in this project with the goal of monitoring all agricultural wells within the District. This data will provide site-specific groundwater depths to correlate with the KRGSA's Minimum Thresholds and Measurable Objectives and allow the District to determine areas that may benefit from additional recharge.

2.3.2 Additional Water Supplies

The District is a participant in ongoing, planned, and future programs to strengthen and diversify its water sources and provide flexibility in years with limited water supply. This diversification of water sources (Kern River, SWP, groundwater, recycled water) coupled with conjunctive use (intentional canal recharge, in-district banking programs, and out-of-district/in-basin banking programs) provides the District with extensive operational flexibility. This flexibility results in optimizing use of available water supplies, especially during drought times.

The District's WAP (Todd, 2011) allows for optimization of the District's surface water allowing more groundwater supplies to be available throughout the District during periods when surface water supplies are limited. The District has historically and will continue to purchase excess water in Pioneer Storage Project, just northwest of the KDWD, for overdraft protection because this water will not be recovered and will lead to increased groundwater levels in northwestern KDWD. The City of Bakersfield provides recycled water to growers in KDWD. Use of recycled water offsets groundwater pumping.

Additional KRGSA-related programs described in the next section also result in increased supply availability in times of drought.

2.3.3 Other Actions to Improve Drought Resilience Planning

The Kern Subbasin GSP identified KRGSA projects and management actions to achieve groundwater sustainability that will also result in drought resilience because groundwater can be used during times of limited surface water supply. The KRGSA already has under its control sufficient Kern River and imported SWP water to achieve sustainability under a variety of future demand scenarios. By using all of its Kern River entitlement (less obligations) conjunctively with imported water and recycled water supplies, the KRGSA is implementing six Phase One projects that collectively provide:

- Increases in recharge and banking to offset potential future deficits and avoid overdraft
- Decreases in municipal and agricultural pumping
- Optimal conjunctive management of surface water and groundwater resources
- Improvements in drinking water quality for disadvantaged communities
- Mitigation for the potential of land subsidence in disadvantaged communities.

Three water supply projects have been identified to meet potential future deficits in the historical and projected water budgets, thereby reducing the potential for future overdraft conditions while providing adequate supply to support projected demands. One project provides for demand reduction with increased urbanization of former agricultural lands. Two water quality projects provide improvements to drinking water quality for disadvantaged communities (DACs) in the KRGSA. A summary of the water supply projects is provided in **Table 1**. Additional details and status of these projects and additional future projects can be found in the Kern Subbasin GSP annual reports.

Table 1. Phase One Project Summary for KRGSA GSP

GSP PMA	Project	Description	Expected Benefits
KRGSA-1	Water Allocation Plan	KDWD plans to use its full Kern River entitlement as prioritized in its Water Allocation Plan (WAP) for the Agricultural MA. The WAP total average supply has been corrected for planned sales to NKWSD.	20,797 AFY
KRGSA-2	Kern River Optimized Conjunctive Use	The City plans to use its full Kern River entitlement, less current obligations, to mitigate undesirable results for water levels and water quality in the Urban MA.	89,619 AFY
KRGSA-3	Lining of Pool #8	The Kern County Water Agency's (Agency) - Improvement District No. 4 (ID4) Cross Valley Canal (CVC) Extension Lining Project – Pool No. 8 (Project) includes installation of approximately 5,280 lineal feet of fiber-reinforced concrete lining to reduce seepage, increase water delivery reliability, reduce maintenance efforts and reduce the potential for canal breaches.	Completed
KRGSA-4	Urban Conservation	Future urban demand will be reduced from current modeled levels. The average urban demand for Metropolitan Bakersfield is reported by local UWMPs is 211 gallons per capita per day (gpcpd). Previous estimates for future demand were estimated at 248 gpcpd and basin wide GSP modelling included this estimate in all future model scenarios.	21,299 AFY
KRGSA-5	ENCSD North Weedpatch Highway Water System Consolidation	Up to six small water systems in the northeast KRGSA will be consolidated into the ENCSD system for benefits to drinking water quality, including to disadvantaged communities (DACs).	No new supply; improved water quality to DACs
KRGSA-6	South Kern and Old River Mutual Water System Consolidation	Two small mutual water systems in the southern KRGSA will be consolidated into the City of Bakersfield's domestic water system for benefits to drinking water quality, including to disadvantaged communities (DACs). The Project will include new water distribution systems connecting the mutual water systems with the City's water system, which improve drinking water quality for the DAC.	No new supply; improved water quality to DACs
KRGSA-7	Expand Recycled Water Use in the KRGSA	The City will increase recycled water use inside of the KRGSA from its WWTP No. 3 in 2026 when a contract for use outside of the KRGSA expires (about 72% is currently used outside of the KRGSA).	11,556 to 13,407 AFY
KRGSA-8	Conversion of Agricultural Lands to Urban Use	Approximately 10,000 acres of current KRGSA agricultural lands is expected to be urbanized; this future urban demand is already included in the projected water budget, so 100% of this agricultural water use represents a demand reduction.	27,000 AFY
	Possible Water Exchange	KRGSA member agencies can perform exchanges of surface water and groundwater for benefits to water quality, including to DACs	No new supply; improved water quality to DACs

3 DROUGHT RESPONSE

During periods of potential water supply shortage, District staff will monitor the projected supply and demand for water and will recommend to the District General Manager the anticipated extent of the shortage and the recommended drought level response. The District General Manager will then recommend to the Board of Directors the declaration or termination of the appropriate drought level. The sections below discuss water shortage indicators and drought stages and actions.

3.1 WATER SHORTAGE INDICATIONS

Declaration of a water shortage is dependent upon many factors because the District has a suite of water supplies available to them. The first step is to determine if one or more of the District's supplies has the potential to be available in limited quantities in the near future.

The SWP water availability is posted in the State's Notices to SWP Long-Term Water Supply Contractors (NTCs). The NTCs contain information on SWP water allocations, water supply programs, billing information, and other administrative matters. Table A SWP allocations differ each year and also can change over the course of the year. Initial allocations are based primarily on a conservative dry hydrology, current storage, and releases to be made through the year, and these allocations can change over winter and through spring to reflect the actual and forecast water supply. This information is available on the DWR website for SWP Water Contractors <https://water.ca.gov/Programs/State-Water-Project/Management/SWP-Water-Contractors>.

To provide a means of comparison between current Kern River flows and long-term average flow conditions, an annual river index is calculated and included in annual Kern River Hydrographic Reports. A preliminary river index is also modeled between February and June by the City of Bakersfield under the supervision of the Kern River Watermaster using the DWR's B-120 forecast. In addition, KDWD conducts its own internal modeling on Kern River water supplies. KDWD employs its own hydrographer who monitors precipitation, snow fall, temperature, and other weather indicators that will affect the flows of the Kern River on a daily basis. This information is reviewed and used to predict near-term and long-term river flows and estimate the District's Kern River entitlement.

Table 2 provides a general guideline to initiate internal discussions of a potential shortage. **Table 3** is a list of KDWD wells with Sustainable Management Criteria in the Kern Subbasin GSP (Kern, 2025) Monitoring Well Network. The Sustainable Management Criteria (SMCs) assigned to each well can be used as indicators of groundwater level declines and potential shortages.

Table 2. Water Shortage Indicators for KDWD

Water Source	Indicator	Comments	Potential Shortage
Kern River	Kern River flow is measured at First Point. Annual river index is calculated and included in annual Kern River Hydrographic Reports.	First Point flows can vary considerably. Annual Kern River Indices for a 22-year period from 1995 through 2016 ranged from 19 percent (2015) to 236 percent (1998), with an average of 94 percent	April Index below 50%
SWP	Table A allocation and Article 21 water	18,655 AFY historical average (from Todd, 2020)	Less than 5,000 AFY
Groundwater	Groundwater levels	Historic low water levels in select wells (GSP minimum thresholds) are used as an indicator of an undesirable result for the GSP	See minimum thresholds in Table 3

Table 3. KDWD Wells with Sustainable Management Criteria in the KRGSA GSP Monitoring Well Network

GSP RMW State Well Number	RMW No.	Management Area	RMW Well Status	Monitoring Network
30S/28E-11F01	RMW-030	Agricultural	Current	GWL
30S/26E-25A02	RMW-032	Urban	Current	GWL
30S/28E-35L01	RMW-034	Agricultural	Current	GWL
31S/26E-10J01	RMW-035R	Agricultural	Current	GWL
31S/26E-16P01	RMW-037	Agricultural	Current	GWL
31S/27E-19D99	RMW-038R	Agricultural	Current	GWL, GWQ
31S/29E-30J01	RMW-041	Agricultural	Current	GWL
31S/28E-20D	RMW-192	Agricultural	Current	GWL
31S/29E-28C	RMW-193	Agricultural	Current	GWL, GWQ
31S/27E-07B	RMW-195	Agricultural	Current	GWL
31S/27E-12Q	RMW-196	Agricultural	Current	GWL
32S/28E-01P	RMW-197	Agricultural	Current	GWL, GWQ
30S28E29B002M	RMW-216	Agricultural	Current	GWL
30S29E31C	RMW-217	Agricultural	Current	GWL
31S27E33K001M	RMW-218	Agricultural	Current	GWL, GWQ
31S28E14D001M	RMW-219	Agricultural	Current	GWL
	RMW-310	Agricultural	Current	GWQ

3.2 DROUGHT RESPONSE STAGES OF ACTIONS AND DECLARATION OF A WATER SHORTAGE

A drought response stage and associated actions will be declared by the District’s Board of Directors at a regular or emergency meeting. Three drought response levels have been established and are:

- Level 1 – Drought Advisory**
- Level 2 – Moderate Drought**
- Level 3 – Severe Drought**

Level 1 – Drought Advisory

A Level 1 Drought Advisory will be declared if at least one of the Potential Shortage indicators in **Table 2** is reached or is expected to be reached in the near future. The primary focus of this early level is to initiate public awareness of the drier than normal conditions

and encourage voluntary reductions in water use and or consideration of using other supplies that are more plentiful.

Potential Actions:

- Provide information to District landowners and growers of the Drought Advisory Level and include this information in the District’s weekly newsletter
- Provide information on the District’s website along with suggestions for water use reductions
- Monitor closely the current and projected water supply and compare it with the projected demand in anticipation of the possible need to upgrade to Drought Level 2 - Moderate Drought.

Level 2 – Moderate Drought

A Level 2 Moderate Drought will be declared if more than one of the Potential Shortage indicators in **Table 2** is reached. When a Level 2 drought is declared, KDWD staff and Board of Directors will discuss which of the Water Shortage Allocations and Response Actions are appropriate. The next section provides details on these Water Shortage Allocations and Response Actions. Because the District has a portfolio of supplies, each situation will be unique depending upon the level and type of shortages.

Potential Actions:

- All the potential actions for a Level 1 Drought
- Allocation of the District’s SWP supplies as per Resolution No. 2009-05
- Prorate Kern River Utility Water as per the District’s 2015 Rules and Regulations.

Level 3 – Severe Drought

A Level 3 Severe Drought will be declared if at least two of the Potential Shortage indicators in **Table 2** are reached. Response actions to a Level 3 drought will be discussed and voted upon by the KDWD Board of Directors. Response actions are detailed in the next section and a combination of actions will likely occur. As mentioned before, each water supply shortage situation will be unique and different combinations of response actions would be appropriate depending upon the types of shortages, season, water demands, and availability of other water supplies at that time.

Potential Actions:

- All the potential actions for Drought Levels 1 and 2
- Take proactive steps to purchase additional water supplies and participate in Dry Year Programs provided through Kern County Water Agency
- Consideration of Dry Year Programs to reduce Kern River Power Flow obligations to increase storage in Isabella Reservoir for use during peak irrigation season.

3.3 WATER SHORTAGE ALLOCATIONS AND RESPONSE ACTIONS

Kern River Water

Kern River Utility Water may be prorated during times of shortage based on: (1) anticipated total deliverable water to specific areas within the District Service Areas, (2) total acres within those Areas, (3) acres owned or operated by each customer within those Areas, and (4) any other equitable factors deemed necessary and appropriate by the District (KDWD 2015 Rules and Regulations). During periods of severe water shortage, the District may deliver Utility Water on a rotational basis. The rotation may cause growers to go several days or weeks between deliveries.

The District's WAP (Todd, 2011) prioritizes Kern River water use as follows:

1. Irrigation deliveries within each Service Area
2. Irrigation deliveries within the District
3. Municipal and industrial use
4. In-District groundwater recharge
5. Pioneer Project groundwater recharge
6. Other uses (including meeting additional surface demands, groundwater recharge, and transfers to out-of-district agencies).

Imported SWP Water

Allocation of the District's SWP supplies is governed by Resolution No. 2009-05 and the "2nd Amendment to the 1974 Plan for Water Allocation and Procedure for Setting State Water Tolls" according to the following process:

1. The Board of Directors shall have the option to sell up to 2,000 acre-feet/year of Kern Delta's State Water Project (SWP) contractual water supply out-of-district but within Kern County.
2. The annual SWP contractual water supply, less any water sold out-of-district pursuant to Paragraph 1, shall be allocated as follows:
 - a) 12,500/30,000 to Eastside Utility lands and Eastside Area Non-Utility lands capable of receiving service from the Eastside Canal or the Central Branch of the Kern Island Canal.
 - b) 17,500/30,000 to Stine, Farmers, and Buena Vista Utility lands and Non-Utility lands lying west of the Kern Island Central Canal that are capable of receiving service.
3. Specific allocations to individual service areas shall be determined based on the following guidelines:
 - a) 20% of the amounts allocated to the Eastside and Westside Areas shall be reserved to cover operational recharge within the District's canals. The remaining 80% of the Eastside and Westside Area supplies shall be allocated to individual District consumers.
 - b) Water will be allocated to Eastside Area consumers (utility and non-utility) on an equal acre-foot per acre basis.

- c) The Westside Area supply shall be allocated to Stine, Farmers, and Buena Vista Utility consumers and Westside Non-Utility consumers, i.e., located west of Highway 99, capable of receiving service in amounts such that the total water deliveries to each area (based on projected long term average Utility Water deliveries and available SWP supply for that year) shall be equal in terms of acre-feet per acre.

Groundwater

Landowners in the District pump groundwater to cover shortages in surface water supplies.. The District may shut off deliveries or refuse to make deliveries if private facilities are not reasonably maintained.

The District’s conjunctive use program operations have been developed to maximize its surface water supplies in order to maintain sustainable groundwater quality and quantity and preserve groundwater supplies for drought conditions. In its GWMP, the District identifies its Groundwater Basin Management Measures to protect and sustain its groundwater and surface water supplies.

3.4 ENFORCEMENT AND APPEALS

Water users and landowners will be informed of the specific drought requirement through public notices, mailers, and/or information posted on the District’s website. The District may consider fines for knowingly disregarding drought requirements. A customer can request a variance by submitting in writing an application that includes reasons and supporting documentation for the request. The District may request a non-refundable processing fee for review of the application.

3.5 MONITORING AND EVALUATION

Monitoring and evaluation of the effectiveness of the Drought Plan is important for identifying methods that worked and ones that did not provide the anticipated benefits. District landowners are encouraged to use surface water when available to preserve groundwater resources for drought conditions. Accordingly, all surface water brought into the District is measured along with seepage losses, which result in groundwater recharge. Delivered water is recorded at each turnout.

To evaluate the effectiveness of the Drought Plan, water availability and use of various water sources during a drought may be compared to water demands and use in past years, including dry, normal and wet conditions. This information may be helpful to understand the shift in use of water supplies during a drought and to ascertain if water use practices change over the course of the drought and between droughts. These assessments may also provide information on the effectiveness of the District’s drought-related communications to its customers. For example, did water use practices change after the District issued a Level 1 Drought Advisory or did changes not occur until a Level 2 – Moderate Drought was declared?

The Drought Plan will be updated every five years in conjunction with the AWMP and the monitoring and evaluation information collected will be useful information when updating the Drought Plan.

3.6 COMMUNICATION PROTOCOLS

KDWD coordinates and collaborates regularly with others regarding local and regional water management in all years. These activities intensify during periods of drought in order to minimize adverse drought impacts across a range of stakeholders. KDWD is a key member of the KRGSA, which cooperatively manages water supply sources in the area to achieve groundwater sustainability. Drought declarations and actions are announced and posted to the District's website along with information on actions being taken to address these reductions.

3.7 FINANCIAL IMPACTS

During a drought, water use may decrease resulting in a decrease in water sales and corresponding District revenue. There may also be a potential increase in expenditures that result from the implementation of drought management actions. Measures to overcome revenue impacts could include use of reserve funds and/or a rate adjustment. The District anticipates that reserves would be used to offset the revenue impact. If the water shortage is or appears to be long-term or if District reserves are low, the District may elect to initiate rate adjustments or drought surcharges to offset these losses.

4 REFERENCES

Kern County Subbasin, Kern Subbasin Groundwater Sustainability Plan, August 2025.

National Oceanic and Atmospheric Administration (NOAA), 2019, National Climatic Data Center (NCDC), Bakersfield Monthly Precipitation, 1889-2010 and 2011-2018 data downloads, accessed March 2018 and February 2019. <https://www.ncdc.noaa.gov/cdo-web/>, accessed March 2018 and February 2019.

Todd Engineers, 2011, Kern Delta Water District Water Allocation Plan.

Todd Engineers, 2013, Final Groundwater Management Plan Update, Kern Delta Water District, October 11.

Todd Groundwater, 2020, Final Groundwater Sustainability Plan (GSP) Kern River Groundwater Sustainability Agency (KRGSA), January.

APPENDIX F

Farm-Gate Delivery Report for 2019 and Water Deliveries Report, 2017

WUEdata - Aggregated Farm Gate Submittals

[Sign In](#)

[Back](#)

Aggregated Farm Gate Submittal

Title 23, Division 2, Chapter 5.1, Article 2 of the CCR requires water supplier subject to the regulation to report to DWR the previous calendar year's aggregated farm gate delivery by April 1 of the subsequent year

1. Water Supplier (auto-populated)		2. Contact Information (auto-populated)	
Name	Kern Delta W.D.	Name	Jana Marquez
Address	501 Taft Hwy Bakersfield, CA 93307	Title	Groundwater Manager
Phone #	(661) 834-4656	Address	501 Taft Highway, Bakersfield, CA 93307
Fax		Phone #	(661) 834-4656
		Fax	
		Email	jana@kerndelta.org
Total Number of Farm-Gates	513	Submittal Date	4/8/2025
Number of Measured Farm-Gates	269	Reporting Year	2024
Irrigated Acreage for Reporting Period	128960		
Total Service Area Acreage	128960		

3. Aggregated Farm-Gate Delivery Data**: (provide monthly or bimonthly data in acre-feet, by one groundwater basin or sub-basin per row)

Monthly Deliveries													
Basin/SubBasin #	Jan	Feb	Mar	Apr	May	Jun	Jul	Aug	Sep	Oct	Nov	Dec	Total
San Joaquin Valley/Kern County 5-022.14	2729.23	2759.32	4456.82	9643.7	18794.73	31604.22	32411.21	23754.43	8908.28	4185.43	2524.05	590.73	142362.1
Total	2729.23	2759.32	4456.82	9643.7	18794.73	31604.22	32411.21	23754.43	8908.28	4185.43	2524.05	590.73	142362.1

Bimonthly Deliveries							
Basin/SubBasin #	Jan-Feb	Mar-Apr	May-Jun	Jul-Aug	Sep-Oct	Nov-Dec	Total

AFGDR Exemption By checking this box you acknowledge that you did not meet the reporting requirements of delivering 2,000 or more acre-feet of water or supplying to 2,000 or more irrigated acres.

4. Explanations, Comments and Best Professional Practices***:

Note: An agricultural water supplier's total water use may be different from Aggregated Farm-Gate deliveries because measurement at these points may not account for other practices (such as groundwater recharge/conjunctive use, water transfers, wheeling to other agencies, urban use, etc).

* "Farm-gate" means the point at which water is delivered from the agricultural water supplier's distribution system to each of its individual customers as specified in the Agricultural Water Measurement Regulation (Title 23, Division 2, Chapter 5.1, Article 2 of the CCR).

** "Aggregated farm-gate delivery data" means information reflecting the total volume of water an agricultural water supplier provides to its customers and is calculated by totaling its deliveries to customers. Data shall be organized by basin or sub-basin per Water Code Section 531.10(a)(1). See DWR Bulletin 118 for list of groundwater basins and sub-basins.

*** "Best Professional Practices" is defined in Title 23, Division 2, Chapter 5.1, Article 2 of the CCR, Section 597.2.

Uploaded Attachments		
Filename	File Size	Date Uploaded
<i>No attachments have been uploaded.</i>		