



2024 CROP REPORT



Table of Contents

2024 Crop Report..... 3

FIGURES

Crop Production, 2024

General Crop Trend, 2024

Crop Map, 2024

APPENDICES

Appendix A, Crop Summary by Acreage

Appendix B, Crop Summary by Township and Range

2024 Crop Report

Kern Delta Water District delivers Kern River and State water to approximately 90,000 acres of irrigated agricultural land within its boundaries covered by six service areas: Kern Island, Buena Vista, Stine, Farmers, Eastside, and State. In the 2024 growing season, 149,601 acres of land was cultivated (multiple cropping included) and approximately 10,863 acres of land was idle either due to crop rotation or conversion to permanent crops such as almonds. Table 1 summarizes the cropped acres within each of Kern Delta Water District’s service areas¹.

Table 1: Service Area Cropped Acres

SERVICE AREA	ACRES
Kern Island	45,683
Buena Vista	19,917
Farmers	11,838
Stine	21,562
Eastside	4,954
State	45,647
Total	149,601

The 2024 growing season’s top commodity was wheat, with 34,367 acres cultivated, followed by corn and almonds, with 21,389 and 20,868 acres cultivated respectively. Table 2 shows selected crops and their accompanying growth trend.

Table 2: Selected Crops – 2024 & Accompanying Growth Trend

CROP	2024	2023	2022	2021	2020	2019
Total Cropped Acres	149,601	147,255	149,706	143,174	137,663	143,926
Alfalfa	11,922	12,173	11,854	13,107	13,417	14,700
Grain ²	60,482	57,305	60,568	57,349	56,497	57,269
Vegetables	19,524	19,508	17,338	18,430	22,660	21,433
Cotton	2,267	1,567	1,260	1,429	2,567	5,335
Trees	35,908	36,319	35,705	33,643	33,028	30,859
Grapes	4,285	4,633	4,963	4,837	4,819	5,727
Tomatoes	1,940	4,314	3,171	1,812	1,176	1,095
Carrots	4,786	4,311	4,217	4,479	5,505	5,887

¹ Crop data provided by the Kern County Department Agriculture and Measurement Standards in an ESRI shape file and is sorted by Kern Delta Water District via ArcGIS.

² Includes corn, oats, triticale, wheat, etc.

Approximately 76 crop varieties were grown throughout the District in 2024 (See **Appendix A** and **Appendix B** for individual crop types, locations, and acreages). The top ten crops cultivated in 2024 were wheat, corn, almonds, pistachios, alfalfa, carrots, grapes³, potatoes, sorghum milo, and cotton (acreages shown in Table 3).

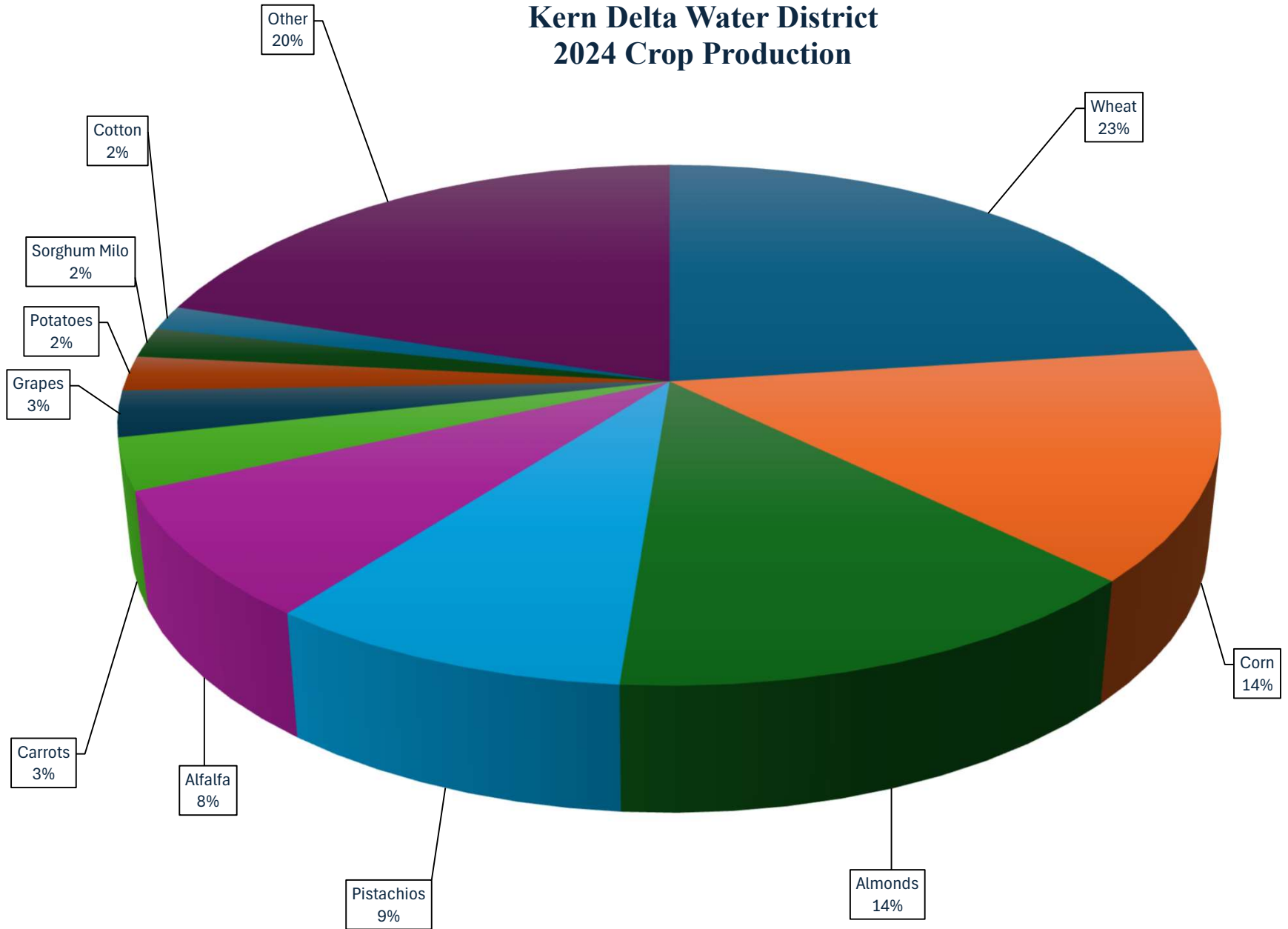
Table 3: 2024 Top Ten Crops

Crop	Acres
Wheat	34,367
Corn	21,388
Almonds	20,868
Pistachios	13,741
Alfalfa	11,922
Carrots	4,786
Grapes	4,285
Potatoes	3,222
Sorghum Milo	2,802
Cotton	2,267

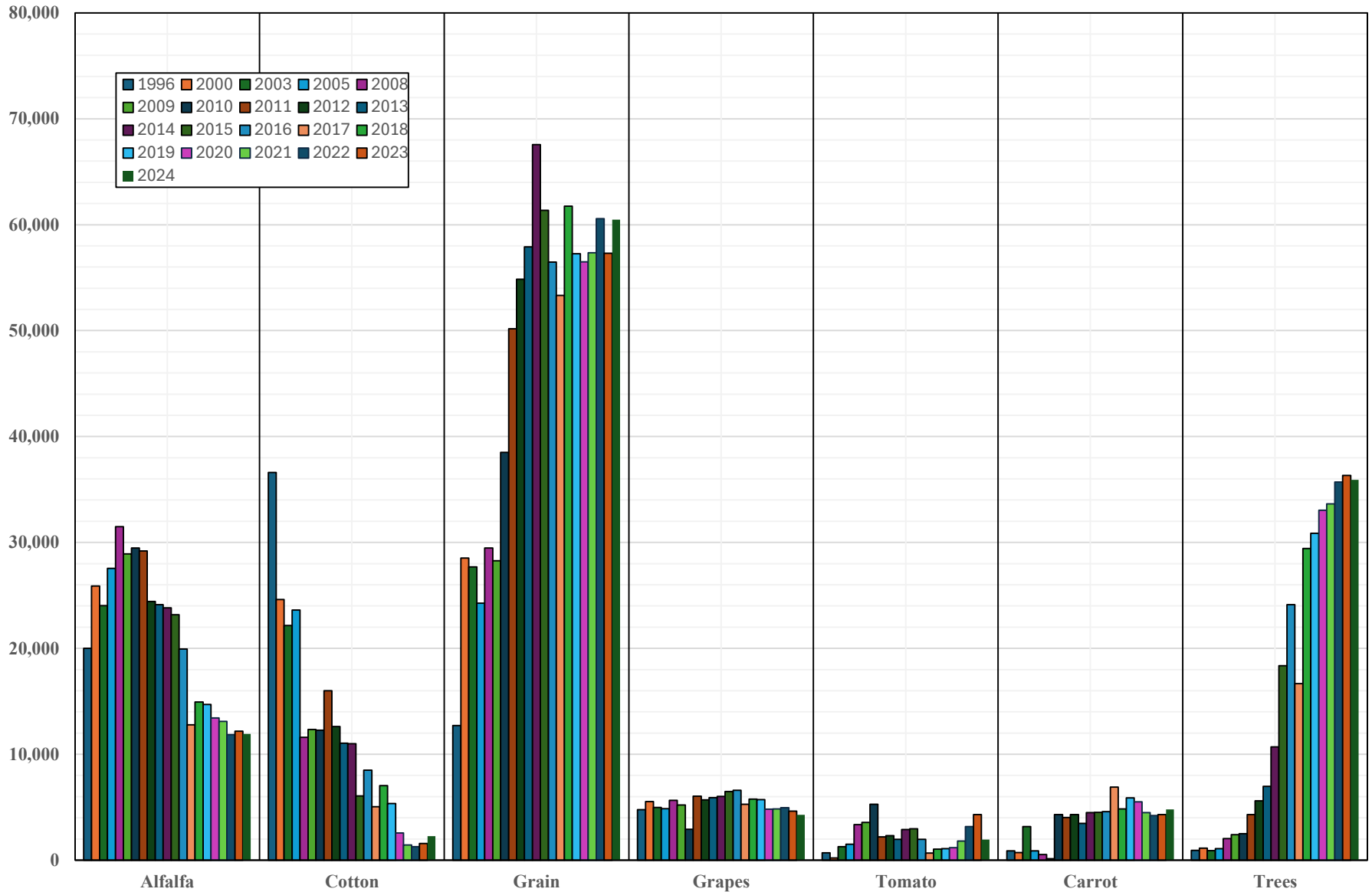
³ Includes table, wine, and raisins.

FIGURES

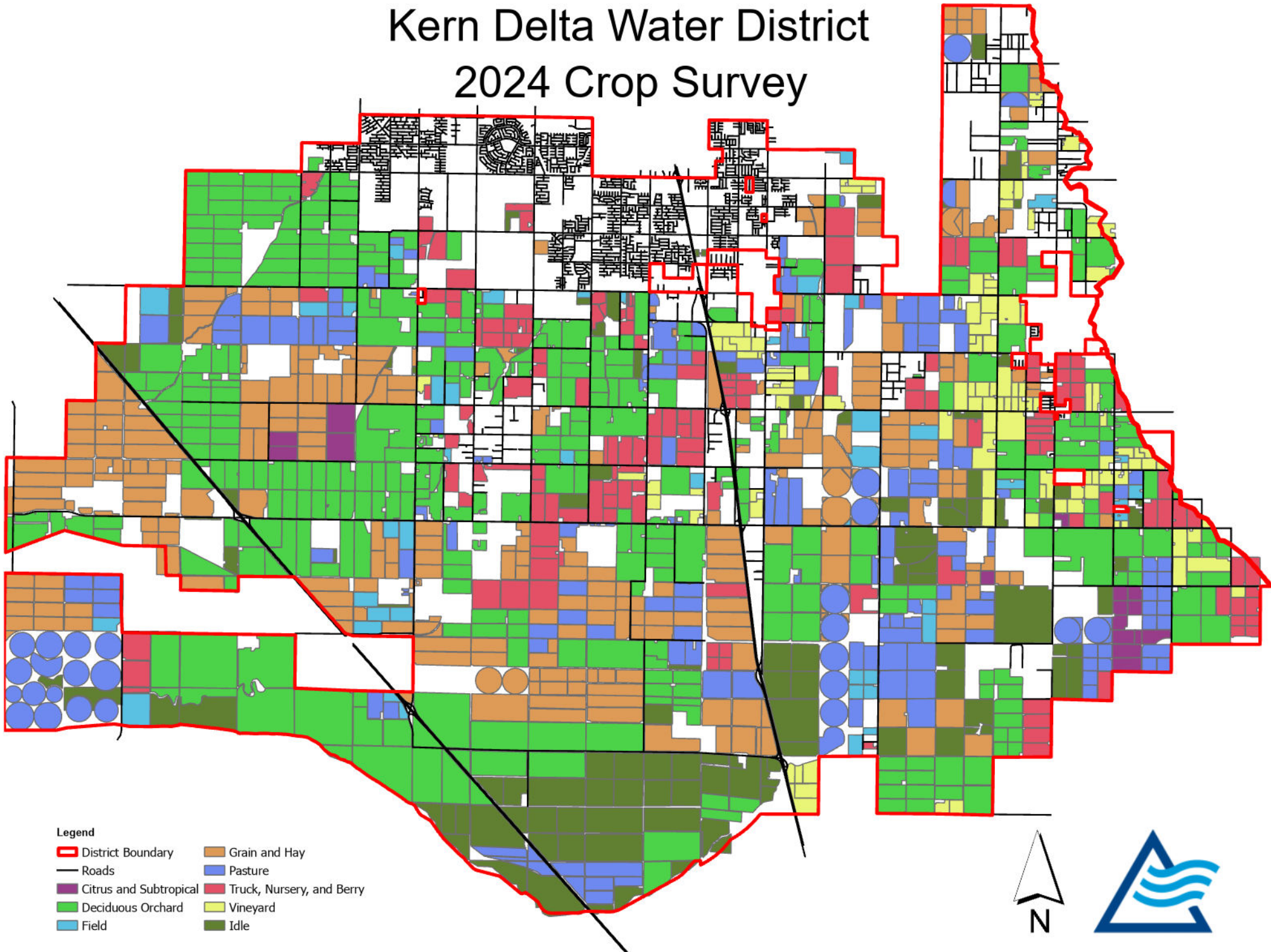
Kern Delta Water District 2024 Crop Production



General Crop Trends Over Time



Kern Delta Water District 2024 Crop Survey



APPENDIX A

KERN DELTA WATER DISTRICT
CROP REPORT
2024 GROWING SEASON
SUMMARY BY ACREAGE

COMMODITY	ACREAGE
Wheat	34,367
Corn	21,389
Almonds	20,308
Pistachios	13,741
Alfalfa	11,922
Idle	10,863
Carrots	4,700
Potatoes	3,222
Grapes	3,094
Sorghum Milo	2,802
Cotton	2,267
Tomatoes	1,940
Watermelons	967
Triticale	950
Olives	946
Garlic	929
Cabbage	870
Bok Choy	778
Pasture	727
Spinach	719
Cilantro	714
Oats	659
Onions	585
Broccoli	562
Almonds, Organic	560
Radishes	559
Parsley	552
Turnips	514
Grapes, Raisins	499
Mustard Greens	445
Sweet Potatoes	398
Grapes, Wine	383

KERN DELTA WATER DISTRICT
CROP REPORT
2024 GROWING SEASON
SUMMARY BY ACREAGE

COMMODITY	ACREAGE
Cauliflower	365
Daikon	365
Kohlrabi	365
Parsnip	365
Peas	365
Barley	315
Beets	308
Cherries	279
Gai Choy	270
Gai Lon	270
Grapes, Wine Organic	270
Sudan Grass	215
Bean, Dried	193
Hay	151
Mustard	150
Pepper, Fruiting	135
Green Onions	126
Celery	120
Dill	114
Fennel	114
Carrots, Organic	86
Bean, Succulent	80
Swiss Chard	77
Rutabagas	76
Lettuce, Romaine	68
Nursery	62
Grapes, Organic	40
Oranges	40
Sweet Basil	40
Leeks	30
Arugula	28
Edible Flower	28
Honeydew Melon	28

KERN DELTA WATER DISTRICT
CROP REPORT
2024 GROWING SEASON
SUMMARY BY ACREAGE

COMMODITY	ACREAGE
Lettuce, Leaf	28
Rapeseed	28
Lemons	20
Squash, Summer	20
Pumpkins	10
Safflower	10
Apricots	4
Peaches	4
Plums	4
Pomegranates	4
Blueberries	2
Total Cropped Acres	149,601

APPENDIX B

**KERN DELTA WATER DISTRICT
CROP REPORT
2024 GROWING SEASON
SUMMARY BY TOWNSHIP AND RANGE**

LOCATION	COMMODITY	QUANTITY	UNITS
30S/26E	Total Cultivated Acres		3,544
	Almonds	3,004	Acres
	Almonds, Organic	305	Acres
	Garlic	78	Acres
	Potatoes	157	Acres
30S/27E	Total Cultivated Acres		1,257
	Almonds	458	Acres
	Potatoes	205	Acres
	Carrots	170	Acres
	Alfalfa	146	Acres
	Corn	107	Acres
	Cabbage	91	Acres
	Idle	40	Acres
	Oats	40	Acres
30S/28E	Total Cultivated Acres		6,717
	Wheat	1,127	Acres
	Almonds	1,080	Acres
	Corn	819	Acres
	Potatoes	694	Acres
	Carrots	538	Acres
	Triticale	414	Acres
	Alfalfa	385	Acres
	Garlic	384	Acres
	Grapes	363	Acres
	Idle	263	Acres
	Sorghum Milo	200	Acres
	Pistachios	162	Acres
	Oats	120	Acres
	Grapes, Raisins	60	Acres
	Hay	60	Acres
	Lemons	20	Acres
	Oranges	20	Acres
	Pasture	8	Acres

**KERN DELTA WATER DISTRICT
CROP REPORT
2024 GROWING SEASON
SUMMARY BY TOWNSHIP AND RANGE**

LOCATION	COMMODITY	QUANTITY	UNITS
30S/29E	Total Cultivated Acres		540
	Almonds	338	Acres
	Grapes, Raisins	202	Acres
31S/26E	Total Cultivated Acres		28,861
	Wheat	12,321	Acres
	Corn	5,961	Acres
	Almonds	3,417	Acres
	Pistachios	2,248	Acres
	Sorghum Milo	1,940	Acres
	Alfalfa	1,488	Acres
	Idle	450	Acres
	Olives	436	Acres
	Cotton	235	Acres
	Cabbage	150	Acres
	Triticale	215	Acres
31S/27E	Total Cultivated Acres		30,408
	Almonds	7,567	Acres
	Wheat	5,748	Acres
	Corn	5,035	Acres
	Carrots	2,441	Acres
	Alfalfa	1,805	Acres
	Potatoes	1,670	Acres
	Tomatoes	760	Acres
	Cotton	635	Acres
	Onions	493	Acres
	Sorghum Milo	480	Acres
	Garlic	467	Acres
	Idle	351	Acres
	Sweet Potatoes	328	Acres
	Pistachios	285	Acres
	Triticale	284	Acres
	Turnips	266	Acres
	Cherries	259	Acres
	Watermelons	224	Acres

**KERN DELTA WATER DISTRICT
CROP REPORT
2024 GROWING SEASON
SUMMARY BY TOWNSHIP AND RANGE**

LOCATION	COMMODITY	QUANTITY	UNITS
	Grapes	205	Acres
	Barley	200	Acres
	Bean, Dried	193	Acres
	Almonds, Organic	128	Acres
	Beets	126	Acres
	Sudan Grass	120	Acres
	Carrots, Organic	86	Acres
	Rutabagas	72	Acres
	Cabbage	64	Acres
	Sweet Basil	40	Acres
	Pasture	24	Acres
	Oats	18	Acres
	Pumpkins	10	Acres
	Safflower	10	Acres
	Apricots	4	Acres
	Peaches	4	Acres
	Plums	4	Acres
	Pomegranates	4	Acres
31S/28E	Total Cultivated Acres		31,405
	Wheat	6,581	Acres
	Corn	4,926	Acres
	Alfalfa	3,213	Acres
	Almonds	1,899	Acres
	Idle	1,757	Acres
	Grapes	1,740	Acres
	Pistachios	1,595	Acres
	Carrots	850	Acres
	Bok Choy	710	Acres
	Cabbage	497	Acres
	Spinach	497	Acres
	Oats	481	Acres
	Broccoli	452	Acres
	Tomatoes	386	Acres
	Mustard Greens	377	Acres
	Radishes	377	Acres

**KERN DELTA WATER DISTRICT
CROP REPORT
2024 GROWING SEASON
SUMMARY BY TOWNSHIP AND RANGE**

LOCATION	COMMODITY	QUANTITY	UNITS
	Cilantro	351	Acres
	Grapes, Wine	300	Acres
	Cauliflower	297	Acres
	Daikon	297	Acres
	Kohlrabi	297	Acres
	Parsley	297	Acres
	Parsnip	297	Acres
	Peas	297	Acres
	Gai Choy	270	Acres
	Gai Lon	270	Acres
	Turnips	248	Acres
	Grapes, Raisins	219	Acres
	Sorghum Milo	167	Acres
	Potatoes	155	Acres
	Mustard	150	Acres
	Beets	132	Acres
	Celery	120	Acres
	Sudan Grass	95	Acres
	Onions	92	Acres
	Hay	91	Acres
	Bean, Succulent	80	Acres
	Dill	54	Acres
	Fennel	54	Acres
	Almonds, Organic	52	Acres
	Grapes, Organic	40	Acres
	Lettuce, Romaine	40	Acres
	Olives	40	Acres
	Watermelons	40	Acres
	Cotton	38	Acres
	Triticale	37	Acres
	Arugula	28	Acres
	Edible Flower	28	Acres
	Green Onions	28	Acres
	Honeydew Melon	28	Acres
	Rapeseed	28	Acres
	Rutabagas	4	Acres

**KERN DELTA WATER DISTRICT
CROP REPORT
2024 GROWING SEASON
SUMMARY BY TOWNSHIP AND RANGE**

LOCATION	COMMODITY	QUANTITY	UNITS
	Blueberries	2	Acres
	Nursery	2	Acres
31S/29E	Total Cultivated Acres	7,239	
	Almonds	2,431	Acres
	Alfalfa	740	Acres
	Grapes	515	Acres
	Carrots	476	Acres
	Potatoes	341	Acres
	Olives	328	Acres
	Corn	301	Acres
	Grapes, Wine Organic	270	Acres
	Pistachios	230	Acres
	Tomatoes	225	Acres
	Idle	219	Acres
	Pepper, Fruiting	135	Acres
	Barley	115	Acres
	Radishes	114	Acres
	Green Onions	98	Acres
	Grapes, Wine	83	Acres
	Sweet Potatoes	70	Acres
	Cilantro	64	Acres
	Dill	60	Acres
	Fennel	60	Acres
	Nursery	60	Acres
	Beets	50	Acres
	Broccoli	42	Acres
	Wheat	36	Acres
	Parsley	32	Acres
	Leeks	30	Acres
	Lettuce, Leaf	28	Acres
	Lettuce, Romaine	28	Acres
	Cherries	20	Acres
	Oranges	20	Acres
	Grapes, Raisins	18	Acres

**KERN DELTA WATER DISTRICT
CROP REPORT
2024 GROWING SEASON
SUMMARY BY TOWNSHIP AND RANGE**

LOCATION	COMMODITY	QUANTITY	UNITS
32S/26E	Total Cultivated Acres		5,920
	Pistachios	2,548	Acres
	Alfalfa	1,549	Acres
	Idle	570	Acres
	Wheat	438	Acres
	Watermelons	313	Acres
	Cotton	310	Acres
	Corn	177	Acres
	Sorghum Milo	15	Acres
32S/27E	Total Cultivated Acres		18,990
	Pistachios	4,742	Acres
	Wheat	4,699	Acres
	Idle	4,360	Acres
	Corn	2,506	Acres
	Cotton	899	Acres
	Pasture	695	Acres
	Tomatoes	487	Acres
	Alfalfa	413	Acres
	Almonds	114	Acres
	Almonds, Organic	75	Acres
32S/28E	Total Cultivated Acres		13,476
	Wheat	3,417	Acres
	Idle	2,560	Acres
	Pistachios	1,931	Acres
	Alfalfa	1,792	Acres
	Corn	1,294	Acres
	Watermelons	390	Acres
	Cilantro	299	Acres
	Grapes	271	Acres
	Parsley	223	Acres
	Spinach	222	Acres
	Cotton	150	Acres
	Tomatoes	82	Acres

**KERN DELTA WATER DISTRICT
CROP REPORT
2024 GROWING SEASON
SUMMARY BY TOWNSHIP AND RANGE**

LOCATION	COMMODITY	QUANTITY	UNITS
	Swiss Chard	77	Acres
	Bok Choy	68	Acres
	Broccoli	68	Acres
	Cabbage	68	Acres
	Carrots	68	Acres
	Cauliflower	68	Acres
	Daikon	68	Acres
	Kohlrabi	68	Acres
	Mustard Greens	68	Acres
	Parsnip	68	Acres
	Peas	68	Acres
	Radishes	68	Acres
	Squash, Summer	20	Acres

32S/29E	Total Cultivated Acres	1,244
----------------	-------------------------------	--------------

Alfalfa	390	Acres
Idle	293	Acres
Corn	263	Acres
Carrots	156	Acres
Olives	142	Acres

Total Cultivated Acres	149,601
-------------------------------	----------------