



2022 CROP REPORT



Table of Contents

2022 Crop Report.....	3
-----------------------	---

FIGURES

Crop Production, 2022

General Crop Trend, 2022

Crop Map, 2022

APPENDICES

Appendix A, Crop Summary by Acreage

Appendix B, Crop Summary by Township and Range

2022 Crop Report

Kern Delta Water District delivers Kern River and State water to approximately 90,000 acres of irrigated agricultural land within its boundaries covered by six service areas: Kern Island, Buena Vista, Stine, Farmers, Eastside, and State. In the 2022 growing season, 149,706 acres of land was cultivated (multiple cropping included) and approximately 13,697 acres of land was idle either due to crop rotation or conversion to permanent crops such as almonds. Table 1 summarizes the cropped acres within each of Kern Delta Water District's service areas¹.

Table 1: Service Area Cropped Acres

SERVICE AREA	ACRES
Kern Island	46,459
Buena Vista	18,911
Farmers	11,641
Stine	21,569
Eastside	5,702
State	45,424
Total	149,706

The 2022 growing season's top commodity was wheat, with 33,761 acres cultivated, followed by almonds and corn, with 20,428 and 18,582 acres cultivated respectively. Table 2 shows selected crops and their accompanying growth trend.

Table 2: Selected Crops – 2022 & Accompanying Growth Trend

CROP	2022	2021	2020	2019	2018	2017
Total Cropped Acres	149,706	143,174	137,663	143,926	146,351	140,042
Alfalfa	11,854	13,107	13,417	14,700	14,933	12,860
Grain ²	60,568	57,349	56,497	57,269	61,749	55,241
Vegetables	17,338	18,430	22,660	21,433	22,323	31,291
Cotton	1,260	1,429	2,567	5,335	7,033	8,578
Trees	35,705	33,643	33,028	30,859	29,425	25,025
Grapes	4,963	4,837	4,819	5,727	5,766	8,140
Tomatoes	3,171	1,812	1,176	1,095	1,041	3,664
Carrots	4,217	4,479	5,505	5,887	4,836	7,137

¹ Crop data provided by the Kern County Department Agriculture and Measurement Standards in an ESRI shape file and is sorted by Kern Delta Water District via ArcGIS.

² Includes corn, oats, triticale, wheat, etc.

Approximately 70 crop varieties were grown throughout the District in 2022 (See **Appendix A** and **Appendix B** for individual crop types, locations, and acreages). The top ten crops cultivated in 2022 were wheat, almonds, corn, pistachios, alfalfa, sorghum, grapes³, carrots, potatoes, and tomatoes (acreages shown in Table 3).

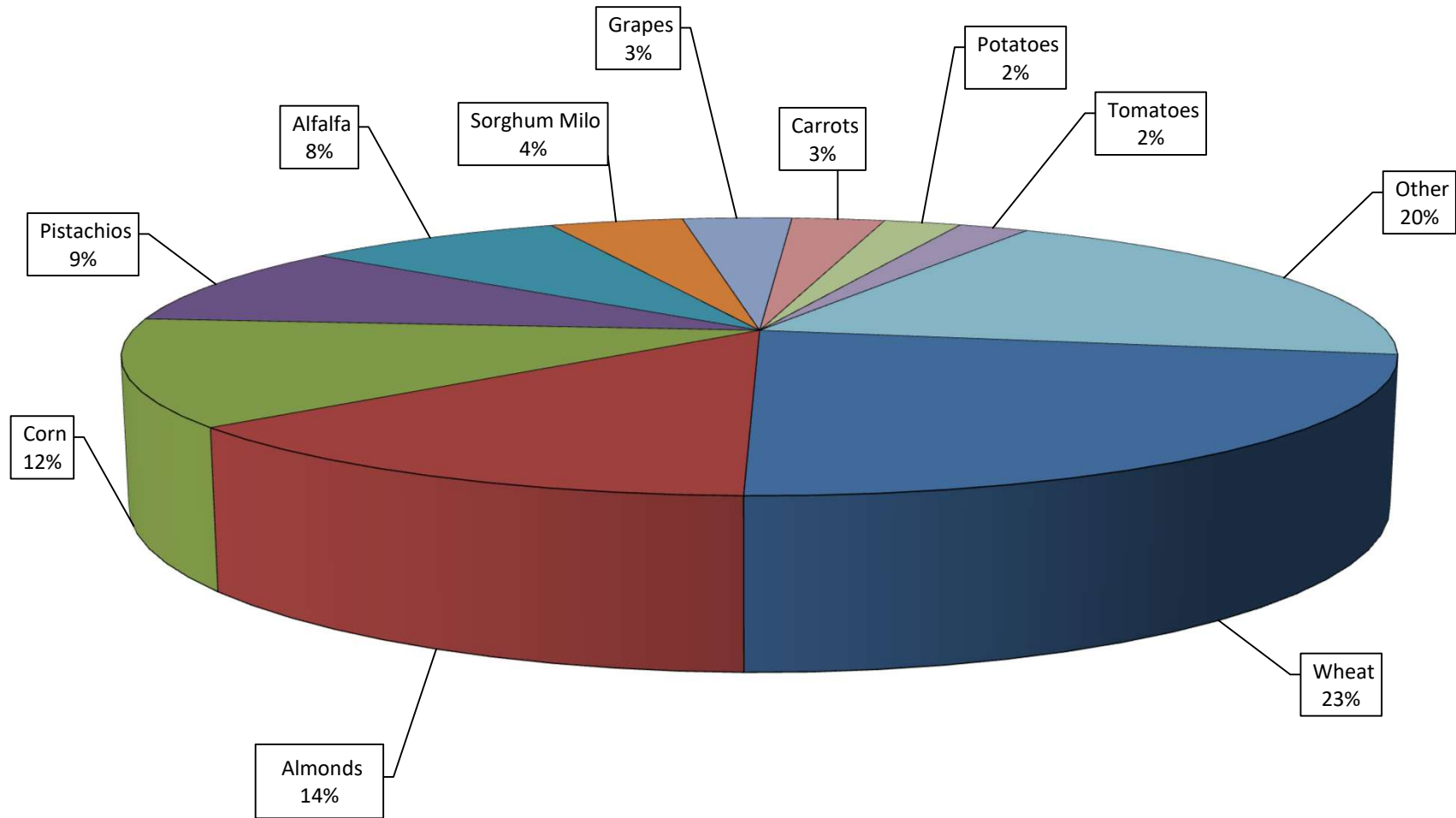
Table 3: 2022 Top Ten Crops

Crop	Acres
Wheat	33,761
Almonds	20,428
Corn	18,582
Pistachios	13,946
Alfalfa	11,854
Grapes	4,963
Carrots	4,217
Potatoes	3,513
Tomatoes	3,171

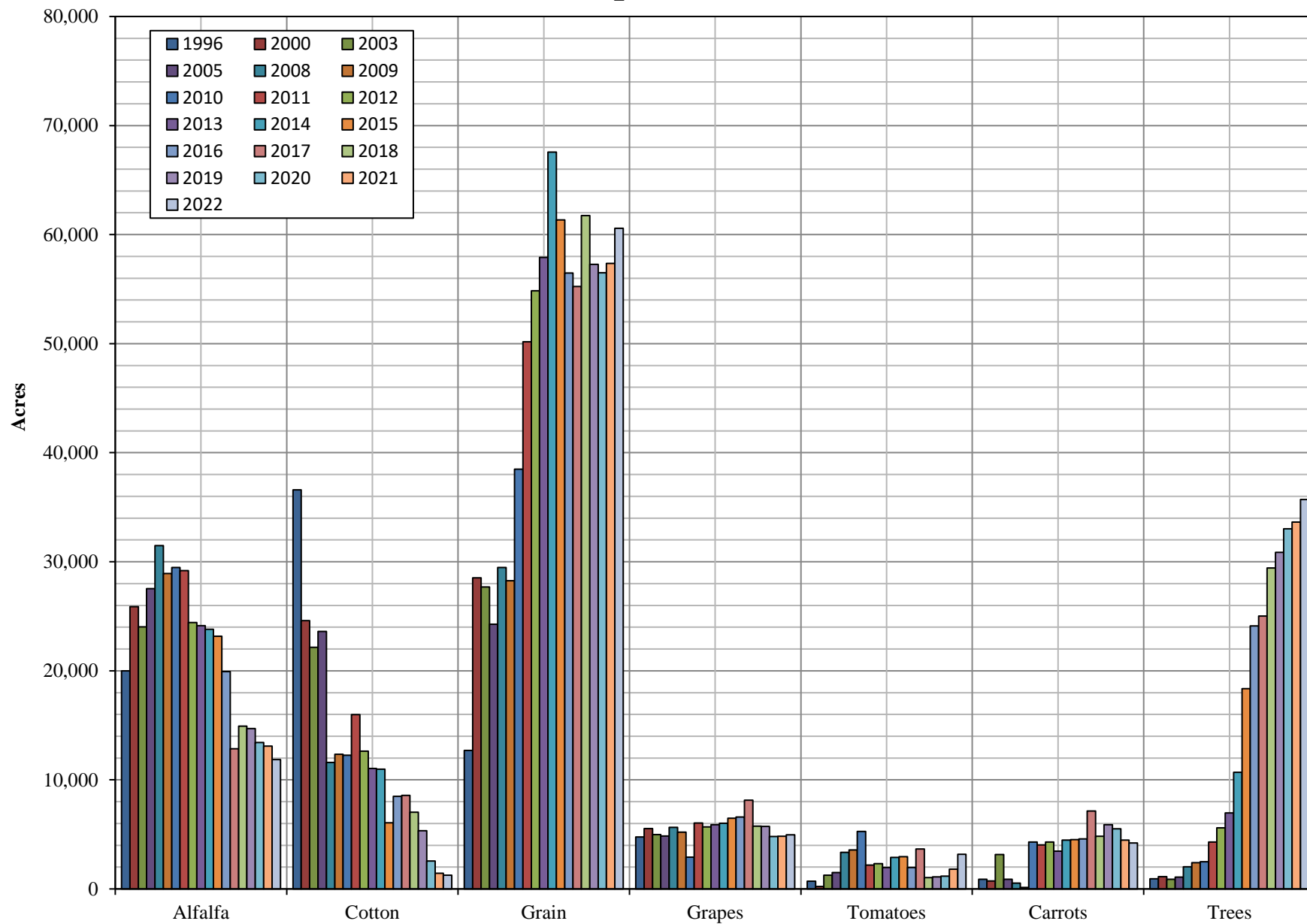
³ Includes table, wine, and raisins.

FIGURES

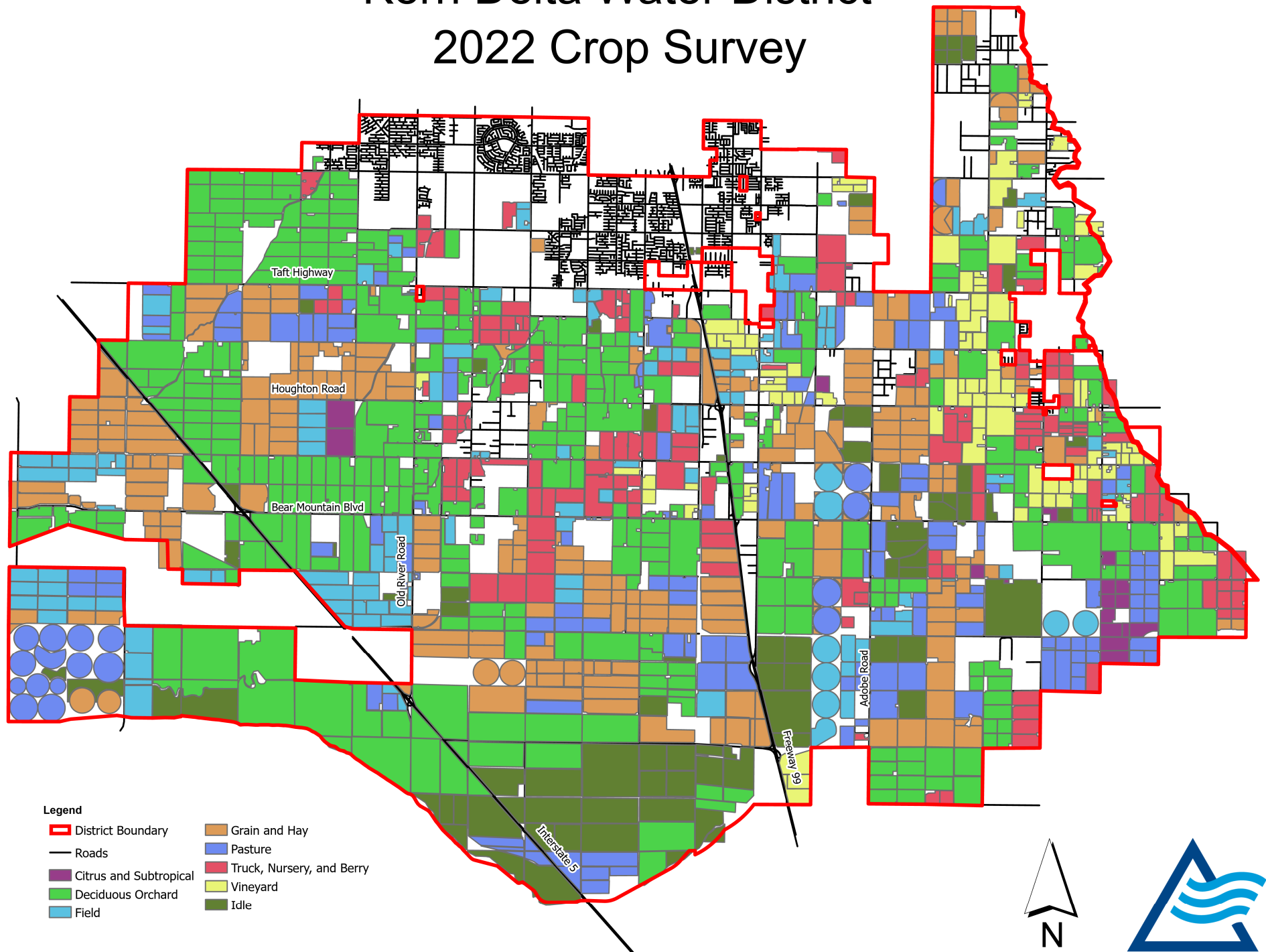
Kern Delta Water District 2022 Crop Production



General Crop Trends Over Time



Kern Delta Water District 2022 Crop Survey



APPENDIX A

KERN DELTA WATER DISTRICT
CROP REPORT
2022 GROWING SEASON
SUMMARY BY ACREAGE

COMMODITY	ACREAGE
Wheat	33,581
Almond	19,624
Corn	18,582
Pistachio	13,946
Idle	13,597
Alfalfa	11,854
Sorghum Milo	6,050
Carrot	3,750
Grape	3,390
Tomato	3,115
Potato	2,747
Oat	1,659
Cotton	1,260
Sudangrass	1,010
Olive	832
Watermelon	827
Garlic	822
Almond-Organic	805
Potato-Org	766
Grape, Wine	764
Pasture	758
Onion Dry	749
Triticale	516
Grape, Raisin	499
Cabbage	471
Carrot-Org	467
Cilantro	464
Rye Grass	445
Turnip	427
Bok Choy	414
Parsley	354
Dill	306
Cherry	293
Gai Choy	270
Gai Lon	270

KERN DELTA WATER DISTRICT
CROP REPORT
2022 GROWING SEASON
SUMMARY BY ACREAGE

COMMODITY	ACREAGE
Grape, Wine-Org	270
Beet	229
Spinach	209
Broccoli	206
Sweet Potato	189
Wheat-Org	180
Mustard	150
Fennel	149
Hay	136
Garlic-Org	132
Mustard Greens	124
Cauliflower	122
Celery	120
Nursurey	113
Onion Green	111
Daikon	102
Idle-Org	100
Radish	90
Orange	80
Kohlrabi	74
Peas	74
Dandelion Green	72
Bean Succulent	70
Watermelon-Org	69
Brussel Sprout	64
Lettuce	60
Tomato-org	56
Swiss Chard	54
Pumpkin	52
Grape-Org	40
Squash	38
Industrial Hemp	35
Apricot	34
Blackberry	34
Peach	34

KERN DELTA WATER DISTRICT
CROP REPORT
2022 GROWING SEASON
SUMMARY BY ACREAGE

COMMODITY	ACREAGE
Plum	34
Arugula	28
Rape	28
Rutabaga	23
Bitter Melon	20
Cabbage-Org	20
Eggplant	20
Kale	20
Kale-Org	20
Lemon	20
Pepper Spice	20
Squash, Summer	20
Cantaloupe	12
Onion Seed	12
Safflower	10
Swiss Chard-Org	10
Lettuce-Org	9
Pepper Fruiting	8
Dec. Tree	5
Fennel-Org	5
Radish-Org	4
Cilantro-Org	3
Parsley-Org	3
Total Cropped Acres	149,706

APPENDIX B

KERN DELTA WATER DISTRICT
CROP REPORT
2022 GROWING SEASON
SUMMARY BY TOWNSHIP AND RANGE

LOCATION	COMMODITY	QUANTITY	UNITS
30S/26E	Total Cultivated Acres		3,455
	Almonds	3,004	Acres
	Almonds, Organic	305	Acres
	Carrots	73	Acres
	Potatoes	73	Acres
30S/27E	Total Cultivated Acres		1,333
	Almonds	458	Acres
	Carrots	250	Acres
	Corn	229	Acres
	Potatoes	125	Acres
	Alfalfa	82	Acres
	Cabbage	62	Acres
	Oats	40	Acres
	Carrots, Organic	35	Acres
	Potatoes, Organic	35	Acres
	Idle	17	Acres
30S/28E	Total Cultivated Acres		6,875
	Wheat	1,185	Acres
	Almonds	947	Acres
	Grapes, Table	764	Acres
	Corn	688	Acres
	Idle	645	Acres
	Triticale	516	Acres
	Potatoes, Organic	512	Acres
	Grapes, Wine	320	Acres
	Alfalfa	198	Acres
	Oats	155	Acres
	Carrots	150	Acres
	Idle, Organic	80	Acres
	Sudan Grass	70	Acres
	Sorghum Milo	69	Acres
	Grapes, Raisins	60	Acres
	Hay	60	Acres
	Carrots, Organic	58	Acres
	Bean, Succulent	50	Acres
	Bok Choy	50	Acres
	Broccoli	50	Acres
	Cabbage	50	Acres
	Mustard Greens	50	Acres
	Radishes	50	Acres
	Spinach	50	Acres

KERN DELTA WATER DISTRICT
CROP REPORT
2022 GROWING SEASON
SUMMARY BY TOWNSHIP AND RANGE

LOCATION	COMMODITY	QUANTITY	UNITS
	Lemons	20	Acres
	Oranges	20	Acres
	Pasture	8	Acres
30S/29E	Total Cultivated Acres		540
	Almonds	338	Acres
	Grapes, Raisins	202	Acres
31S/26E	Total Cultivated Acres		26,857
	Wheat	11,193	Acres
	Corn	5,282	Acres
	Almonds	3,396	Acres
	Sorghum Milo	2,915	Acres
	Pistachios	1,759	Acres
	Alfalfa	1,365	Acres
	Sudan Grass	310	Acres
	Olives	280	Acres
	Idle	201	Acres
	Cabbage	155	Acres
31S/27E	Total Cultivated Acres		30,697
	Almonds	7,712	Acres
	Wheat	5,353	Acres
	Corn	4,120	Acres
	Carrots	2,281	Acres
	Potatoes	1,419	Acres
	Alfalfa	1,384	Acres
	Idle	1,154	Acres
	Tomatoes	1,081	Acres
	Sorghum Milo	927	Acres
	Onions, Dry	749	Acres
	Garlic	747	Acres
	Cotton	730	Acres
	Watermelons	367	Acres
	Pistachios	362	Acres
	Carrots, Organic	322	Acres
	Turnips	262	Acres
	Cherries	259	Acres
	Potatoes, Organic	219	Acres
	Grapes, Table	201	Acres
	Beets	194	Acres
	Oats	188	Acres
	Almonds, Organic	128	Acres
	Cilantro	110	Acres

KERN DELTA WATER DISTRICT
CROP REPORT
2022 GROWING SEASON
SUMMARY BY TOWNSHIP AND RANGE

LOCATION	COMMODITY	QUANTITY	UNITS
	Garlic, Organic	82	Acres
	Watermelons, Organic	69	Acres
	Brussel Sprouts	64	Acres
	Pumpkins	52	Acres
	Dill	26	Acres
	Pasture	24	Acres
	Rutabagas	23	Acres
	Sudan Grass	20	Acres
	Squash	18	Acres
	Onions, Seed	12	Acres
	Cabbage	10	Acres
	Safflower	10	Acres
	Pepper, Fruiting	8	Acres
	Deciduous Trees	5	Acres
	Industrial Hemp	5	Acres
31S/28E	Total Cultivated Acres	29,048	
	Wheat	6,924	Acres
	Corn	3,748	Acres
	Alfalfa	3,175	Acres
	Idle	3,041	Acres
	Pistachios	1,819	Acres
	Almonds	1,699	Acres
	Grapes, Table	1,603	Acres
	Sorghum Milo	851	Acres
	Potatoes	820	Acres
	Oats	802	Acres
	Tomatoes	486	Acres
	Watermelons	460	Acres
	Carrots	361	Acres
	Grapes, Wine	300	Acres
	Bok Choy	290	Acres
	Gai Choy	270	Acres
	Gai Lon	270	Acres
	Grapes, Raisins	219	Acres
	Rye Grass	190	Acres
	Turnips	165	Acres
	Mustard	150	Acres
	Cabbage	120	Acres
	Celery	120	Acres
	Spinach	120	Acres
	Sudan Grass	95	Acres
	Hay	76	Acres
	Dandelion Green	72	Acres

KERN DELTA WATER DISTRICT
CROP REPORT
2022 GROWING SEASON
SUMMARY BY TOWNSHIP AND RANGE

LOCATION	COMMODITY	QUANTITY	UNITS
	Lettuce	60	Acres
	Tomatoes, Organic	56	Acres
	Cilantro	48	Acres
	Cauliflower	48	Acres
	Dill	48	Acres
	Parsley	48	Acres
	Olives	44	Acres
	Grapes, Table-Organic	40	Acres
	Oranges	40	Acres
	Radishes	40	Acres
	Beet	35	Acres
	Pasture	31	Acres
	Industrial Hemp	30	Acres
	Arugula	28	Acres
	Daikon	28	Acres
	Onions, Green	28	Acres
	Rape Seed	28	Acres
	Bean, Succulent	20	Acres
	Bitter Melon	20	Acres
	Eggplant	20	Acres
	Kale	20	Acres
	Pepper, Spice	20	Acres
	Squash	20	Acres
	Nursery	2	Acres
31S/29E	Total Cultivated Acres	8,332	
	Almonds	1,880	Acres
	Sorghum milo	714	Acres
	Wheat	703	Acres
	Alfalfa	571	Acres
	Grapes, Table	571	Acres
	Carrots	560	Acres
	Tomatoes	477	Acres
	Almonds, Organic	372	Acres
	Olives	366	Acres
	Potatoes	310	Acres
	Grapes, Wine-Organic	270	Acres
	Rye Grass	255	Acres
	Sweet Potatoes	189	Acres
	Wheat, Organic	180	Acres
	Grapes, Wine	144	Acres
	Corn	135	Acres
	Nursery	111	Acres
	Idle	56	Acres

KERN DELTA WATER DISTRICT
CROP REPORT
2022 GROWING SEASON
SUMMARY BY TOWNSHIP AND RANGE

LOCATION	COMMODITY	QUANTITY	UNITS
	Swiss Chard	54	Acres
	Carrots, Organic	52	Acres
	Garlic, Organic	50	Acres
	Apricot	34	Acres
	Blackberry	34	Acres
	Cherries	34	Acres
	Peaches	34	Acres
	Plums	34	Acres
	Idle, Organic	20	Acres
	Cabbage, Organic	20	Acres
	Kale, Organic	20	Acres
	Oranges	20	Acres
	Grapes, Raisin	18	Acres
	Cantaloupe	12	Acres
	Swiss Chard, Organic	10	Acres
	Lettuce, Organic	9	Acres
	Fennel, Organic	5	Acres
	Radishes, Organic	4	Acres
	Cilantro	3	Acres
	Parsley, Organic	3	Acres
32S/26E	Total Cultivated Acres	6,560	
	Pistachios	2,548	Acres
	Alfalfa	1,549	Acres
	Corn	829	Acres
	Wheat	754	Acres
	Idle	570	Acres
	Cotton	310	Acres
32S/27E	Total Cultivated Acres	19,988	
	Idle	5,650	Acres
	Pistachios	5,527	Acres
	Wheat	3,856	Acres
	Corn	1,824	Acres
	Tomatoes	839	Acres
	Alfalfa	767	Acres
	Pasture	695	Acres
	Sudan Grass	438	Acres
	Oats	204	Acres
	Almonds	189	Acres
32S/28E	Total Cultivated Acres	14,184	
	Wheat	3,183	Acres
	Idle	2,263	Acres

KERN DELTA WATER DISTRICT
CROP REPORT
2022 GROWING SEASON
SUMMARY BY TOWNSHIP AND RANGE

LOCATION	COMMODITY	QUANTITY	UNITS
	Alfalfa	2,081	Acres
	Pistachios	1,931	Acres
	Corn	1,725	Acres
	Cilantro	306	Acres
	Parsley	306	Acres
	Oats	270	Acres
	Grapes, Table	251	Acres
	Dill	232	Acres
	Tomatoes	232	Acres
	Cotton	220	Acres
	Broccoli	156	Acres
	Fennel	149	Acres
	Sorghum milo	143	Acres
	Onions, Green	83	Acres
	Sudan Grass	77	Acres
	Bok Choy	74	Acres
	Cabbage	74	Acres
	Cauliflower	74	Acres
	Daikon	74	Acres
	Kohlrabi	74	Acres
	Mustard Greens	74	Acres
	Peas	74	Acres
	Spinach	39	Acres
	Squash, Summer	20	Acres
32S/29E	Total Cultivated Acres	1,836	
	Alfalfa	683	Acres
	Sorghum milo	431	Acres
	Wheat	430	Acres
	Olives	142	Acres
	Carrots	75	Acres
	Garlic	75	Acres
	Total Cultivated Acres	149,706	