



2021 CROP REPORT



Table of Contents

| | | |
|-----|------------------|---|
| 1.0 | Summary | 3 |
| 2.0 | Crops | 4 |
| 2.1 | Trees..... | 4 |
| 2.2 | Wheat | 4 |
| 2.3 | Corn..... | 4 |
| 2.4 | Alfalfa | 4 |
| 2.5 | Vines | 4 |
| 3.0 | Organics | 4 |
| 4.0 | Conclusion | 5 |

FIGURES

Crop Production, 2021

General Crop Trend, 2021

Crop Map, 2021

APPENDICES

Appendix A, Crop Summary by Acreage

Appendix B, Crop Summary by Township and Range

1.0 SUMMARY

Kern Delta Water District serves Kern River and State water to approximately 90,000 irrigatable acres of land within its boundaries via five different service rights: Kern Island, Buena Vista, Stine, Farmers, and Eastside. In the 2021 growing season, 143,174 acres of land were cultivated (multiple cropping included) and approximately 11,175 acres of land being idle either due to crop rotation or conversion to permanent crops such as almonds.

The season's top produced commodity was wheat, with 29,909 acres being cropped, followed by almonds and corn, with 19,822 and 17,948 acres being cropped respectively. Table 1 shows selected crops and their accompanying growth trend.

TABLE 1
Selected Crops – 2021
& Accompanying Growth Trend

| CROP | 2021 | 2020 | 2019 | 2018 | 2017 | 2016 |
|-----------------------|------------------------------|---------------------|-------------|-------------|-------------|-------------|
| Total Cropped Acres | 143,174 | 137,663 | 143,926 | 146,351 | 140,042 | 141,061 |
| Alfalfa | 13,107 | 13,417 | 14,700 | 14,933 | 12,860 | 19,937 |
| Corn Feed | 17,948 (48,997) ¹ | 45,142 ² | 57,269 | 50,934 | 55,241 | 47,077 |
| Vegetables | 18,430 | 22,660 | 21,433 | 22,323 | 30,014 | 18,278 |
| Cotton | 1,429 | 2,567 | 5,335 | 7,033 | 8,578 | 8,490 |
| Trees | 33,643 | 33,028 | 30,859 | 29,425 | 25,025 | 24,120 |
| Vines | 4,837 | 5,727 | 5,727 | 5,766 | 8,140 | 6,586 |
| Organics ³ | 2,621 | 2,609 | 2,635 | - | - | - |

¹ All values have been rounded. The value in parenthesis represents corn, oats, and wheat.

² Value includes corn, oats, and wheat to demonstrate a general growth pattern.

³ Organics were not tracked prior to 2019.

2.0 CROPS

Approximately 89 crop varieties were grown throughout the District in 2021 (see **Appendix A** and **Appendix B** for individual crop types, locations, and acreages). The major produced commodities are discussed briefly in the following sections.

2.1 TREES

Almonds continue to be the top tree crop within the District, with 19,822 acres in production, followed by Pistachios at 12,196 acres in production. Table 2 below summarizes the tree crops grown within the District.

2.2 WHEAT

Wheat continues to be a major crop grown within the District, with approximately 29,909 acres being cropped.

2.3 CORN

Corn production increased by 928 acres in 2021, with 17,948 acres being cultivated, compared to 17,020 acres in 2020.

2.4 ALFALFA

Alfalfa cultivation within the District remained relatively steady, with 13,107 acres in production, a decrease of 310 acres from 2020.

2.5 VINES

Vine production includes table grapes, raisins, and wine grapes. Vine production remained relatively steady from 2020 through 2021, with 4,819 and 4,837 acres being cropped respectively.

3.0 ORGANICS

Approximately 2,621 acres of organic crops were grown within the District, with potatoes being the top organic crop with 508 acres in production.

TABLE 1
Selected Tree Crops – 2021
& Accompanying Growth Trend

| TREES | 2021 | 2020 | 2019 | 2018 | 2017 | 2016 | 2015 | 2014 |
|--------------------|-------------|-------------|-------------|-------------|-------------|-------------|-------------|-------------|
| Almonds | 19,822 | 20,165 | 19,855 | 19,135 | 17,078 | 15,017 | 12,149 | 9,459 |
| Pistachios | 12,196 | 11,398 | 9,920 | 8,997 | 6,972 | 8,588 | 5,678 | 891 |
| Cherries | 293 | 322 | 288 | 331 | 353 | 291 | 311 | 303 |
| Other ⁴ | 1,038 | 1,143 | 795 | 963 | 622 | 259 | 232 | 32 |
| Total | 34,278 | 33,028 | 30,859 | 29,425 | 25,025 | 24,155 | 18,369 | 6,958 |

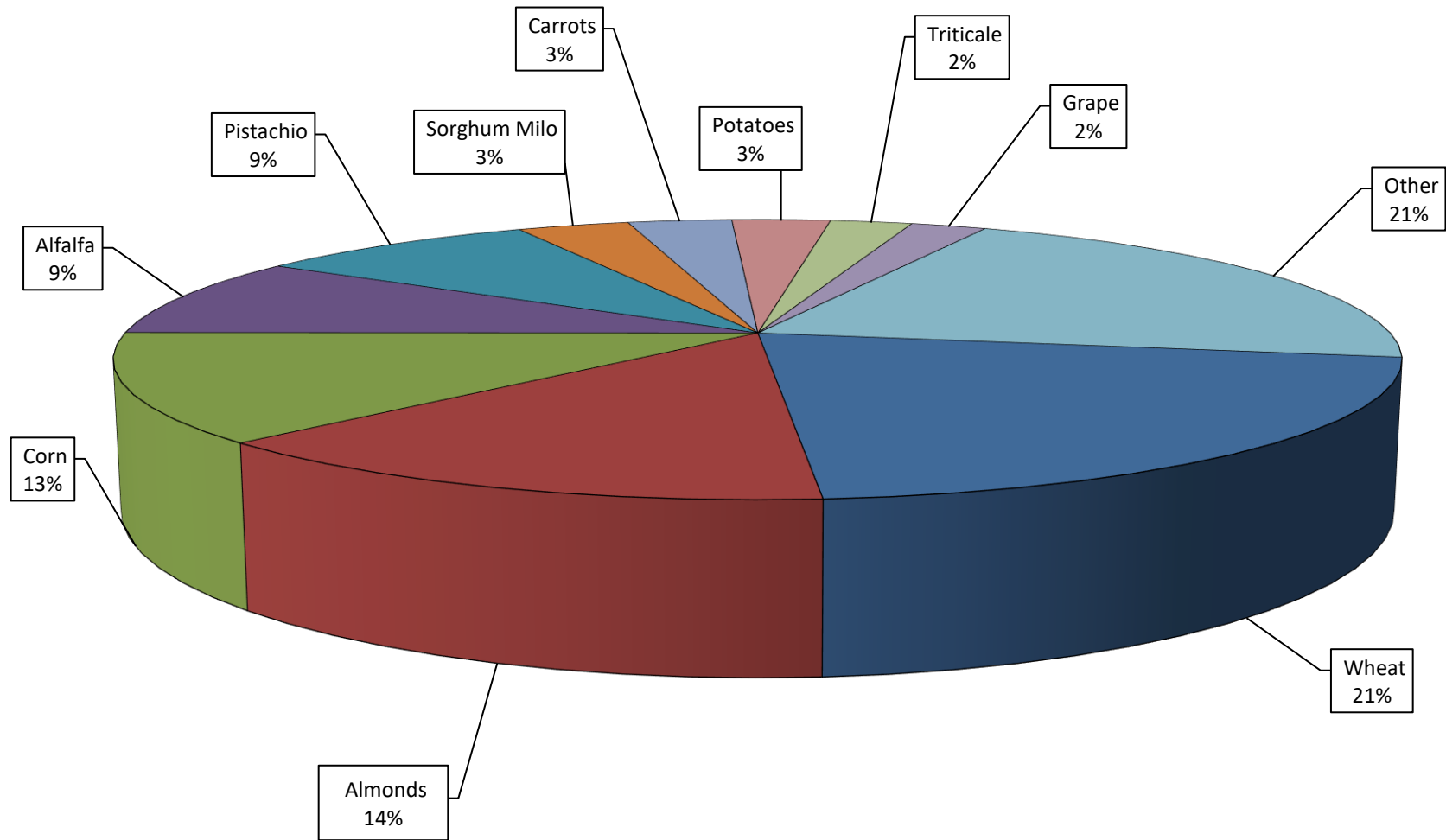
4.0 CONCLUSION

Overall, 89 varieties of crops were grown within the District for the 2021 growing season. The top three commodities produced were wheat, almonds, and corn. Cotton production continues to decline, with only 1,429 acres being cultivated in 2021, down from 2,567 acres in 2020.

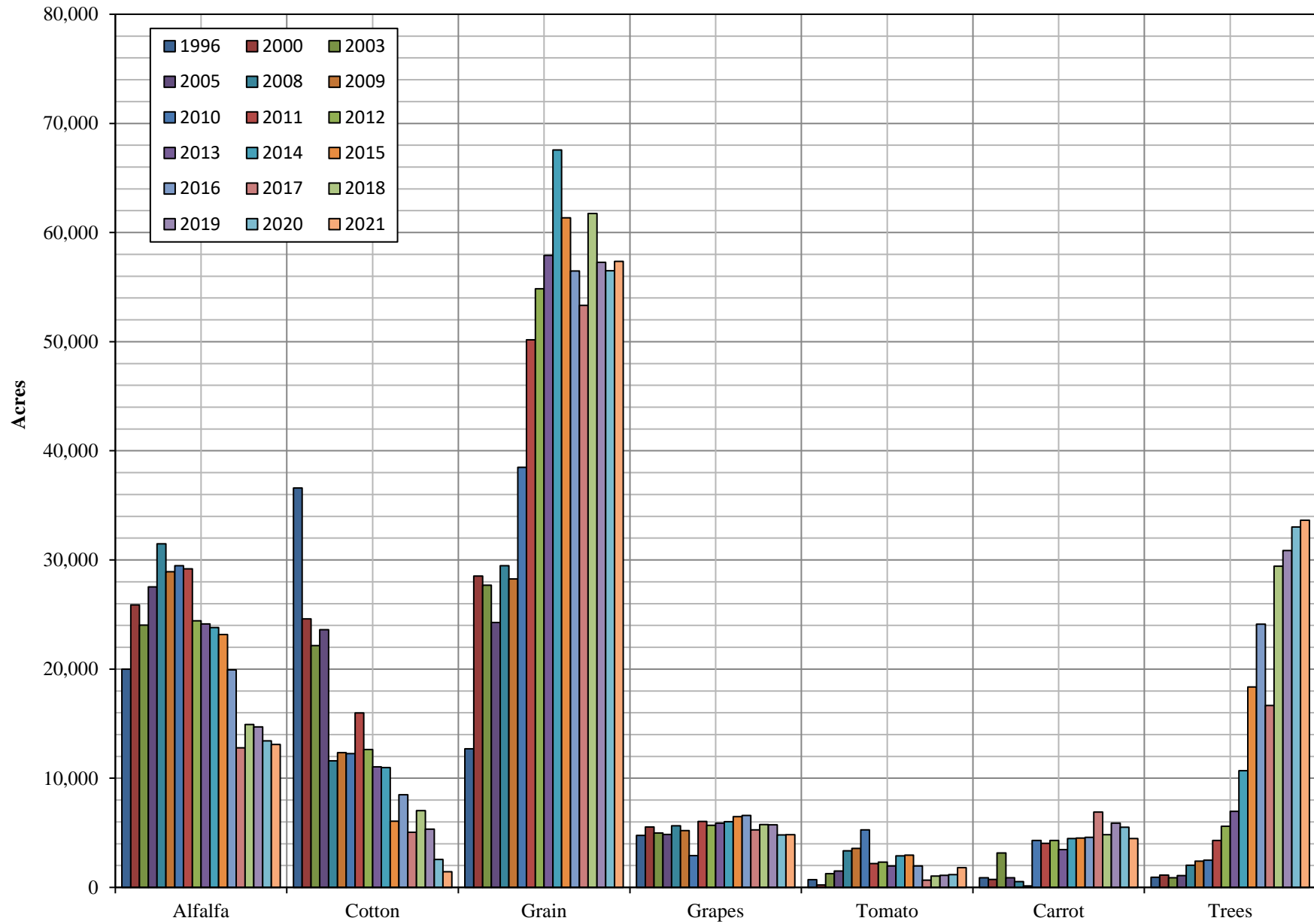
⁴ Other tree crops include apricots, nectarines, oranges, peaches, plums, and olives.

FIGURES

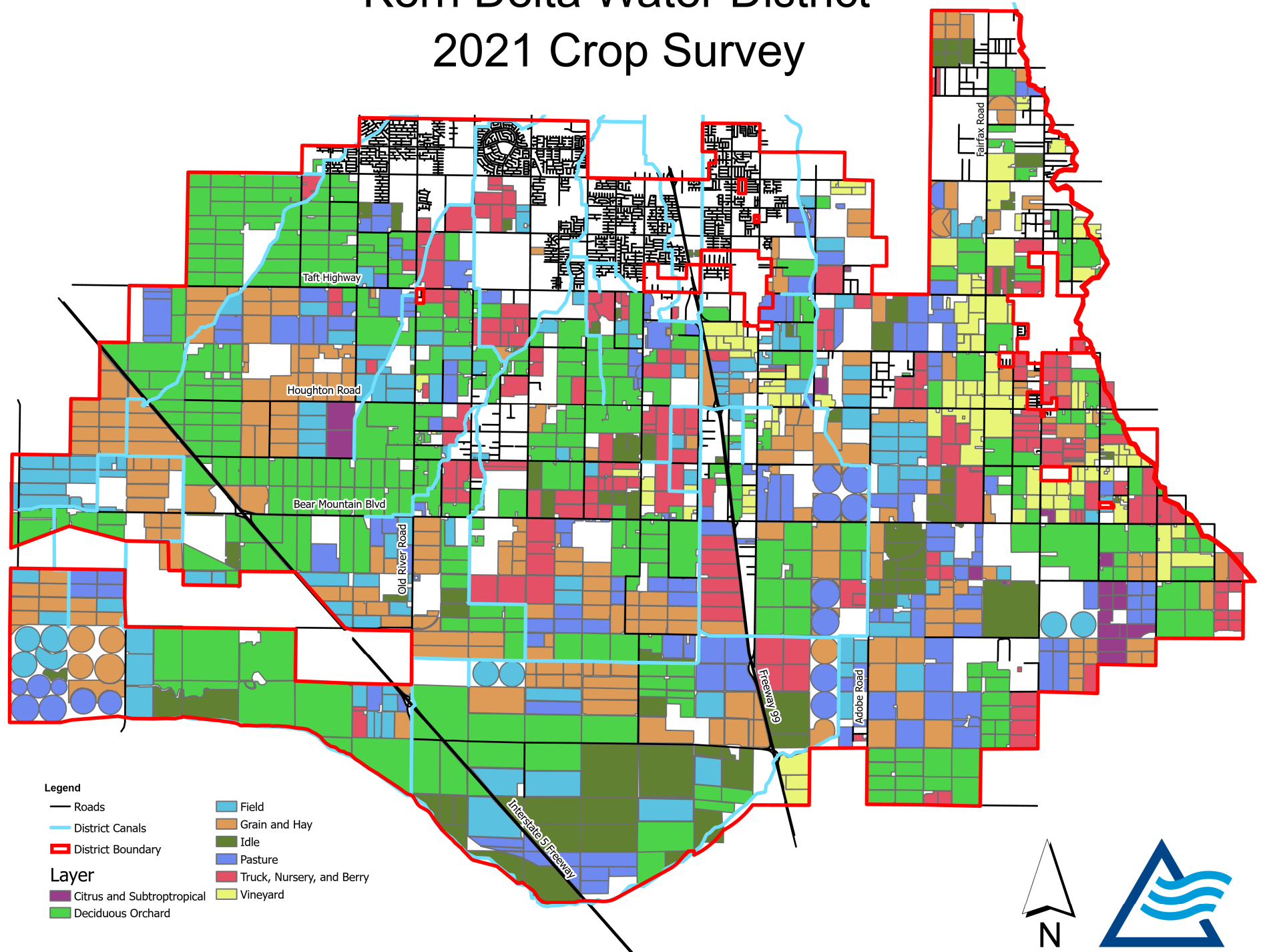
Kern Delta Water District 2021 Crop Production



General Crop Trends Over Time



Kern Delta Water District 2021 Crop Survey



APPENDIX A

KERN DELTA WATER DISTRICT
CROP REPORT
2021 GROWING SEASON
SUMMARY BY ACREAGE

| COMMODITY | ACREAGE |
|-----------------|-----------|
| Wheat | 29,789.35 |
| Almond | 19,388.97 |
| Corn | 17,947.95 |
| Alfalfa | 13,106.55 |
| Pistachio | 12,195.85 |
| Idle | 11,085.21 |
| Sorghum Milo | 4,822.91 |
| Carrot | 4,070.80 |
| Triticale | 3,528.32 |
| Potato | 3,398.00 |
| Grape | 3,215.17 |
| Tomato | 1,812.00 |
| Cotton | 1,429.45 |
| Garlic | 1,155.00 |
| Oat | 1,139.98 |
| Onion Dry | 1,135.00 |
| Watermelon | 1,007.00 |
| Potato-Org | 843.00 |
| Olive | 831.70 |
| Grape, Wine | 764.00 |
| Pasture | 757.80 |
| Cherry | 539.06 |
| Cabbage | 522.00 |
| Turnip | 515.00 |
| Grape, Raisin | 492.00 |
| Almond-Organic | 432.94 |
| Cilantro | 421.00 |
| Gai Lon | 410.00 |
| Carrot-Org | 408.00 |
| Grape, Wine-Org | 326.00 |
| Bok Choy | 314.00 |
| Parsley | 311.00 |
| Beet | 308.00 |
| Gai Choy | 270.00 |

KERN DELTA WATER DISTRICT
CROP REPORT
2021 GROWING SEASON
SUMMARY BY ACREAGE

| COMMODITY | ACREAGE |
|-----------------|---------|
| Sweet Potato | 257.00 |
| Dill | 253.00 |
| Bean Dried | 240.00 |
| Mustard | 222.00 |
| Lettuce | 213.00 |
| Watermelon-Org | 200.00 |
| Spinach | 159.00 |
| Pepper Fruiting | 150.00 |
| Cauliflower | 149.00 |
| Turf/Sod | 137.54 |
| Lettuce Romaine | 130.00 |
| Celery | 120.00 |
| Wheat-Org | 120.00 |
| Peas | 117.00 |
| Broccoli | 116.00 |
| Daikon | 116.00 |
| Nursurey | 112.80 |
| Collard Greens | 108.00 |
| Kale | 108.00 |
| Brussel Sprout | 104.00 |
| Hay | 102.70 |
| Idle-Org | 90.00 |
| Radish | 84.00 |
| Fennel | 82.00 |
| Orange | 80.00 |
| Kohlrabi | 74.00 |
| Mustard Greens | 74.00 |
| Industrial Hemp | 67.50 |
| Garlic-Org | 58.00 |
| Asparagus | 43.00 |
| Honeydew | 43.00 |
| Swiss Chard | 42.00 |
| Grape-Org | 40.00 |
| Lemon | 40.00 |
| Sudangrass | 37.00 |

KERN DELTA WATER DISTRICT
CROP REPORT
2021 GROWING SEASON
SUMMARY BY ACREAGE

| COMMODITY | ACREAGE |
|----------------------------|-------------------|
| Apricot | 35.75 |
| Blackberry | 33.75 |
| Peach | 33.75 |
| Plum | 33.75 |
| Dandelion Green | 32.00 |
| Rutabaga | 26.00 |
| Pumpkin | 25.00 |
| Cantaloupe | 20.00 |
| Kale-Org | 20.00 |
| Lemon-Org | 20.00 |
| Squash, Summer | 20.00 |
| Swiss Chard-Org | 20.00 |
| Squash | 18.00 |
| Pepper Fruiting-Org | 15.00 |
| Dec. Tree | 11.00 |
| Lettuce-Org | 10.00 |
| Fennel-Org | 7.00 |
| Cabbage-Org | 5.00 |
| Cilantro-Org | 2.50 |
| Parsley-Org | 2.50 |
| Total Cropped Acres | 143,173.55 |

APPENDIX B

KERN DELTA WATER DISTRICT
CROP REPORT
2021 GROWING SEASON
SUMMARY BY TOWNSHIP AND RANGE

| LOCATION | COMMODITY | QUANTITY | UNITS |
|----------------|-------------------------------|----------|--------------|
| 30S/26E | Total Cultivated Acres | | 3,455 |
| | Almonds | 3,004 | Acres |
| | Almonds, Organic | 305 | Acres |
| | Carrots | 73 | Acres |
| | Potatoes | 73 | Acres |
| 30S/27E | Total Cultivated Acres | | 2,332 |
| | Carrots | 469 | Acres |
| | Almonds | 458 | Acres |
| | Alfalfa | 273 | Acres |
| | Idle | 215 | Acres |
| | Potatoes | 192 | Acres |
| | Corn | 162 | Acres |
| | Turf/Sod | 138 | Acres |
| | Garlic | 125 | Acres |
| | Onions, Dry | 89 | Acres |
| | Cabbage | 75 | Acres |
| | Potatoes, Organic | 75 | Acres |
| | Turnips | 23 | Acres |
| | Oats | 20 | Acres |
| | Beets | 18 | Acres |
| 30S/28E | Total Cultivated Acres | | 6,024 |
| | Wheat | 1,040 | Acres |
| | Almonds | 869 | Acres |
| | Alfalfa | 678 | Acres |
| | Corn | 515 | Acres |
| | Grapes, Table | 490 | Acres |
| | Triticale | 449 | Acres |
| | Potatoes, Organic | 347 | Acres |
| | Idle | 324 | Acres |
| | Grapes, Wine | 320 | Acres |
| | Sorghum Milo | 170 | Acres |
| | Potatoes | 159 | Acres |
| | Carrots, Organic | 128 | Acres |
| | Idle, Organic | 90 | Acres |
| | Grapes, Raisin | 60 | Acres |
| | Oats | 60 | Acres |
| | Asparagus | 43 | Acres |
| | Cabbage | 43 | Acres |
| | Garlic | 43 | Acres |
| | Honeydew | 43 | Acres |
| | Lettuce | 43 | Acres |
| | Peas | 43 | Acres |
| | Lemons | 20 | Acres |

KERN DELTA WATER DISTRICT
CROP REPORT
2021 GROWING SEASON
SUMMARY BY TOWNSHIP AND RANGE

| LOCATION | COMMODITY | QUANTITY | UNITS |
|----------------|-------------------------------|---------------|-------|
| | Lemons, Organic | 20 | Acres |
| | Oranges | 20 | Acres |
| | Pasture | 8 | Acres |
| 30S/29E | Total Cultivated Acres | 548 | |
| | Almonds | 338 | Acres |
| | Grapes, Raisin | 202 | Acres |
| | Deciduous Trees | 6 | Acres |
| | Industrial Hemp | 2 | Acres |
| 31S/26E | Total Cultivated Acres | 27,467 | |
| | Wheat | 9,956 | Acres |
| | Corn | 5,025 | Acres |
| | Almonds | 3,318 | Acres |
| | Sorghum Milo | 3,069 | Acres |
| | Triticale | 1,798 | Acres |
| | Pistachios | 1,791 | Acres |
| | Alfalfa | 1,482 | Acres |
| | Idle | 601 | Acres |
| | Olive | 280 | Acres |
| | Cabbage | 75 | Acres |
| | Cotton | 73 | Acres |
| 31S/27E | Total Cultivated Acres | 28,969 | |
| | Almonds | 7,249 | Acres |
| | Wheat | 5,179 | Acres |
| | Corn | 4,127 | Acres |
| | Potatoes | 1,942 | Acres |
| | Carrots | 1,856 | Acres |
| | Alfalfa | 1,837 | Acres |
| | Garlic | 987 | Acres |
| | Idle | 954 | Acres |
| | Onions, Dry | 916 | Acres |
| | Cherries | 505 | Acres |
| | Potatoes, Organic | 361 | Acres |
| | Cotton | 353 | Acres |
| | Turnips | 284 | Acres |
| | Tomatoes | 275 | Acres |
| | Beans, Dried | 240 | Acres |
| | Carrots, Organic | 228 | Acres |
| | Watermelon | 219 | Acres |
| | Pistachios | 208 | Acres |
| | Grapes, Table | 204 | Acres |
| | Watermelon, Organic | 200 | Acres |
| | Beets | 166 | Acres |
| | Sorghum Milo | 130 | Acres |

KERN DELTA WATER DISTRICT
CROP REPORT
2021 GROWING SEASON
SUMMARY BY TOWNSHIP AND RANGE

| LOCATION | COMMODITY | QUANTITY | UNITS |
|----------------|-------------------------------|----------|---------------|
| | Almonds, Organic | 128 | Acres |
| | Oats | 111 | Acres |
| | Brussel Sprouts | 104 | Acres |
| | Cilantro | 80 | Acres |
| | Rutabagas | 26 | Acres |
| | Pumpkins | 25 | Acres |
| | Pasture | 24 | Acres |
| | Squash | 18 | Acres |
| | Dill | 16 | Acres |
| | Cabbage | 10 | Acres |
| | Decidious Trees | 5 | Acres |
| | Apricot | 2 | Acres |
| 31S/28E | Total Cultivated Acres | | 27,821 |
| | Wheat | 5,325 | Acres |
| | Corn | 3,818 | Acres |
| | Alfalfa | 3,432 | Acres |
| | Idle | 2,270 | Acres |
| | Almonds | 1,758 | Acres |
| | Grapes, Table | 1,602 | Acres |
| | Pistachios | 1,393 | Acres |
| | Triticale | 1,282 | Acres |
| | Carrots | 943 | Acres |
| | Potatoes | 874 | Acres |
| | Watermelon | 788 | Acres |
| | Oats | 457 | Acres |
| | Gai Lon | 410 | Acres |
| | Tomatoes | 378 | Acres |
| | Grapes, Wine | 300 | Acres |
| | Gai Choy | 270 | Acres |
| | Cabbage | 245 | Acres |
| | Bok Choy | 240 | Acres |
| | Grapes, Raisin | 219 | Acres |
| | Turnips | 208 | Acres |
| | Sorghum Milo | 188 | Acres |
| | Mustard | 150 | Acres |
| | Celery | 120 | Acres |
| | Spinach | 120 | Acres |
| | Hay | 103 | Acres |
| | Lettuce | 80 | Acres |
| | Cauliflower | 75 | Acres |
| | Cotton | 71 | Acres |
| | Onions, Dry | 60 | Acres |
| | Industrial Hemp | 59 | Acres |
| | Grapes, Wine-Organic | 56 | Acres |
| | Cilantro | 48 | Acres |

KERN DELTA WATER DISTRICT
CROP REPORT
2021 GROWING SEASON
SUMMARY BY TOWNSHIP AND RANGE

| LOCATION | COMMODITY | QUANTITY | UNITS |
|----------------|-------------------------------|--------------|-------|
| | Dill | 48 | Acres |
| | Parsley | 48 | Acres |
| | Olives | 44 | Acres |
| | Swiss Chard | 42 | Acres |
| | Grapes, Table-Organic | 40 | Acres |
| | Lettuce, Romaine | 40 | Acres |
| | Oranges | 40 | Acres |
| | Sudan Grass | 37 | Acres |
| | Collard Greens | 36 | Acres |
| | Kale | 36 | Acres |
| | Beets | 35 | Acres |
| | Pasture | 31 | Acres |
| | Nursurey | 2 | Acres |
| 31S/29E | Total Cultivated Acres | 7,902 | |
| | Almonds | 2,205 | Acres |
| | Grapes, Table | 669 | Acres |
| | Carrots | 655 | Acres |
| | Wheat | 505 | Acres |
| | Olives | 366 | Acres |
| | Tomatoes | 348 | Acres |
| | Alfalfa | 346 | Acres |
| | Grapes, Wine-Organic | 270 | Acres |
| | Sweet Potatoes | 257 | Acres |
| | Oats | 255 | Acres |
| | Sorghum Milo | 255 | Acres |
| | Potatoes | 158 | Acres |
| | Grapes, Wine | 144 | Acres |
| | Wheat, Organic | 120 | Acres |
| | Corn | 117 | Acres |
| | Nursurey | 111 | Acres |
| | Lettuce | 90 | Acres |
| | Lettuce, Romaine | 90 | Acres |
| | Radishes | 84 | Acres |
| | Beets | 79 | Acres |
| | Idle | 69 | Acres |
| | Cilantro | 60 | Acres |
| | Potatoes, Organic | 60 | Acres |
| | Garlic, Organic | 58 | Acres |
| | Carrots, Organic | 52 | Acres |
| | Broccoli | 42 | Acres |
| | Daikon | 42 | Acres |
| | Apricot | 34 | Acres |
| | Blackberries | 34 | Acres |
| | Cherries | 34 | Acres |
| | Peaches | 34 | Acres |

KERN DELTA WATER DISTRICT
CROP REPORT
2021 GROWING SEASON
SUMMARY BY TOWNSHIP AND RANGE

| LOCATION | COMMODITY | QUANTITY | UNITS |
|----------------|-------------------------------|---------------|-------|
| | Plum | 34 | Acres |
| | Dandelion Greens | 32 | Acres |
| | Dill | 30 | Acres |
| | Parsley | 30 | Acres |
| | Cantaloupe | 20 | Acres |
| | Kale, Organic | 20 | Acres |
| | Oranges | 20 | Acres |
| | Swiss Chard, Organic | 20 | Acres |
| | Pepper, Fruiting-Organic | 15 | Acres |
| | Grapes, Raisin | 11 | Acres |
| | Lettuce, Organic | 10 | Acres |
| | Fennel, Organic | 7 | Acres |
| | Cabbage, Organic | 5 | Acres |
| | Cilantro, Organic | 3 | Acres |
| | Parsley, Organic | 3 | Acres |
| | Industrial Hemp | 1 | Acres |
| 32S/26E | Total Cultivated Acres | 6,259 | |
| | Pistachios | 2,555 | Acres |
| | Alfalfa | 1,552 | Acres |
| | Corn | 899 | Acres |
| | Wheat | 492 | Acres |
| | Idle | 460 | Acres |
| | Cotton | 176 | Acres |
| | Oats | 110 | Acres |
| | Sorghum Milo | 15 | Acres |
| 32S/27E | Total Cultivated Acres | 17,398 | |
| | Idle | 4,532 | Acres |
| | Pistachios | 4,318 | Acres |
| | Wheat | 3,599 | Acres |
| | Corn | 1,869 | Acres |
| | Alfalfa | 720 | Acres |
| | Pasture | 695 | Acres |
| | Sorghum Milo | 661 | Acres |
| | Cotton | 610 | Acres |
| | Almonds | 189 | Acres |
| | Oats | 127 | Acres |
| | Onions, Dry | 70 | Acres |
| | Beets | 10 | Acres |
| 32S/28E | Total Cultivated Acres | 13,763 | |
| | Wheat | 3,303 | Acres |
| | Alfalfa | 2,330 | Acres |
| | Pistachios | 1,931 | Acres |
| | Idle | 1,659 | Acres |

KERN DELTA WATER DISTRICT
CROP REPORT
2021 GROWING SEASON
SUMMARY BY TOWNSHIP AND RANGE

| LOCATION | COMMODITY | QUANTITY | UNITS |
|----------------|-------------------------------|----------------|-------|
| | Corn | 1,417 | Acres |
| | Tomatoes | 811 | Acres |
| | Sorghum Milo | 336 | Acres |
| | Grapes, Table | 251 | Acres |
| | Cilantro | 233 | Acres |
| | Parsley | 233 | Acres |
| | Dill | 159 | Acres |
| | Cotton | 146 | Acres |
| | Fennel | 82 | Acres |
| | Bok Choy | 74 | Acres |
| | Broccoli | 74 | Acres |
| | Cabbage | 74 | Acres |
| | Cauliflower | 74 | Acres |
| | Daikon | 74 | Acres |
| | Kohlrabi | 74 | Acres |
| | Mustard Greens | 74 | Acres |
| | Peas | 74 | Acres |
| | Collard Greens | 72 | Acres |
| | Kale | 72 | Acres |
| | Mustard | 72 | Acres |
| | Spinach | 39 | Acres |
| | Squash, Summer | 20 | Acres |
| | Industrial Hemp | 6 | Acres |
| 32S/29E | Total Cultivated Acres | 1,216 | |
| | Alfalfa | 459 | Acres |
| | Wheat | 390 | Acres |
| | Pepper, Fruiting | 150 | Acres |
| | Olives | 142 | Acres |
| | Carrots | 75 | Acres |
| | Total Cultivated Acres | 143,154 | |