



2020 Crop Report



Contents

1.0	SUMMARY	1
2.0	CROPS	2
2.1	Wheat.....	2
2.2	Corn.....	2
2.3	Cotton	2
2.4	Alfalfa	2
2.5	Trees	2
2.6	Vegetables	3
3.0	ORGANICS	3
4.0	CONCLUSION	3

FIGURES

Crop Production, 2020

General Crop Trend, 2020

Crop Map, 2020

APPENDICES

Appendix A, Crop Summary by Acreage

Appendix B, Crop Summary by Township and Range

1.0 SUMMARY

Within Kern Delta Water District's boundaries, approximately 137,747 acres of land were cultivated (multiple cropping included) during the 2020 growing season.

The season's top produced commodity was wheat, with approximately 26,782 acres being cropped, followed by almonds, and corn, with 20,165 and 17,020 acres being cropped respectively. Table 1 shows selected crops and their accompanying growth trend.

TABLE 1
Selection Crops – 2020
& Accompanying Growth Trend

CROP	2020	2019	2018	2017	2016	2015	2014
Total Cropped Acres	137,663	143,926	146,351	140,042	141,061	145,000	141,300
Alfalfa	13,417	14,700	14,933	12,860	19,937	23,172	23,817
Corn Feed	17,035 (45,142) ¹	57,269 ²	50,934	55,241	47,077	62,254	67,572
Vegetables	22,660	21,433	22,323	30,014	18,278	18,239	16,914
Cotton	2,567	5,335	7,033	8,578	8,490	6,062	10,986
Trees	33,028	30,859	29,425	25,025	24,120	18,329	10,685
Vines	5,727	5,727	5,766	8,140	6,586	6,478	6,025
Organics ³	2,609	2,635	-	-	-	-	-

¹ All values have been rounded. The value in parenthesis represents corn, oats, and wheat.

² Value includes corn, oats, and wheat to demonstrate a general growth pattern.

³ Organics were not tracked from 2014-2018.

2.0 CROPS

Approximately 91 crop varieties were grown throughout the District in 2020 (see **Appendix A** and **Appendix B** for individual crop types, locations, and acreages). The major produced commodities are briefly discussed in the following sections.

2.1 Wheat

Wheat continues to be a major crop grown within the District, with approximately 26,782 acres being cropped. The crop was evenly spread throughout, from the northwest to the southeast.

2.2 Corn

Approximately 17,020 acres of corn were cultivated in 2020, comprising 30% of the total grain production within the District.

2.3 Cotton

Cotton decreased by 2,768 acres from 2019, with 2,567 being grown in 2020.

2.4 Alfalfa

Alfalfa production within the District decreased slightly with approximately 13,417 acres being cultivated in 2020, a decline of 1,283 acres from 2019.

2.5 Trees

Tree crops increased by approximately 7.03% from 2019, with 33,028 acres in production.

Table 2
Selected Tree Crops – 2020
& Accompanying Trend

TREES	2020	2019	2018	2017	2016	2015	2014	2013
Almonds	20,165	19,855	19,135	17,078	15,017	12,149	9,459	6,109
Pistachios	11,398	9,920	8,997	6,972	8,588	5,678	891	500
Cherries	322	288	331	353	291	311	303	317
Other ⁴	1,143	795	963	622	259	232	32	32
Total	33,028	30,859	29,425	25,025	24,155	18,369	6,958	6,958

⁴ Other tree crops include apricots, nectarines, oranges, peaches, plums, and olives.

2.6 Vegetables

Vegetable production increased by 1,227 acres from 2019. Carrots, potatoes, and Bok Choy were the top three vegetable crops in 2020 with 5,505 acres, 3,734 acres, and 1,631 acres, being cultivated, respectively.

3.0 ORGANICS

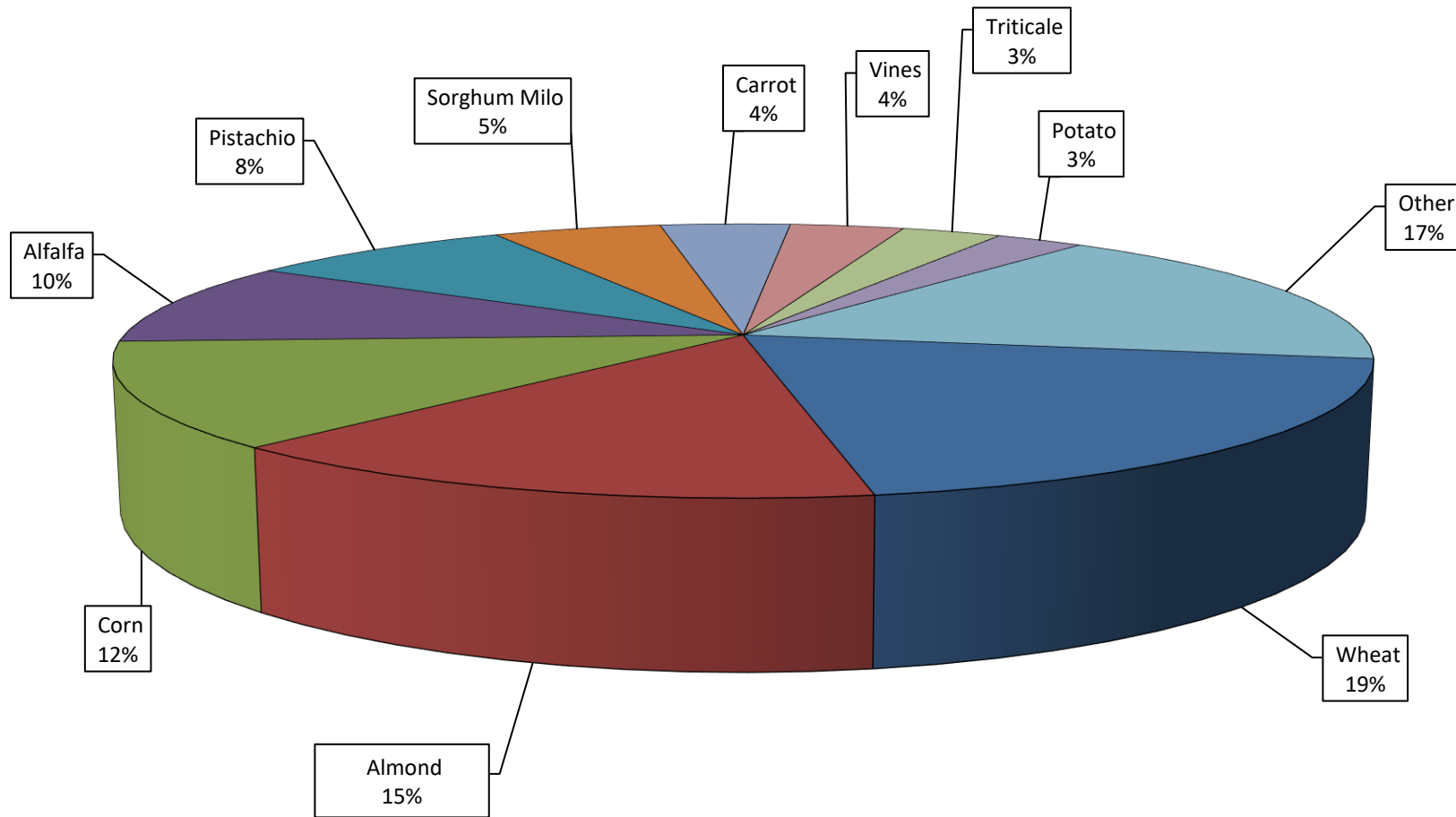
Approximately 2,609 acres of organic crops were grown within the District, with Potatoes being the top organic crop with 587 acres being grown.

4.0 CONCLUSION

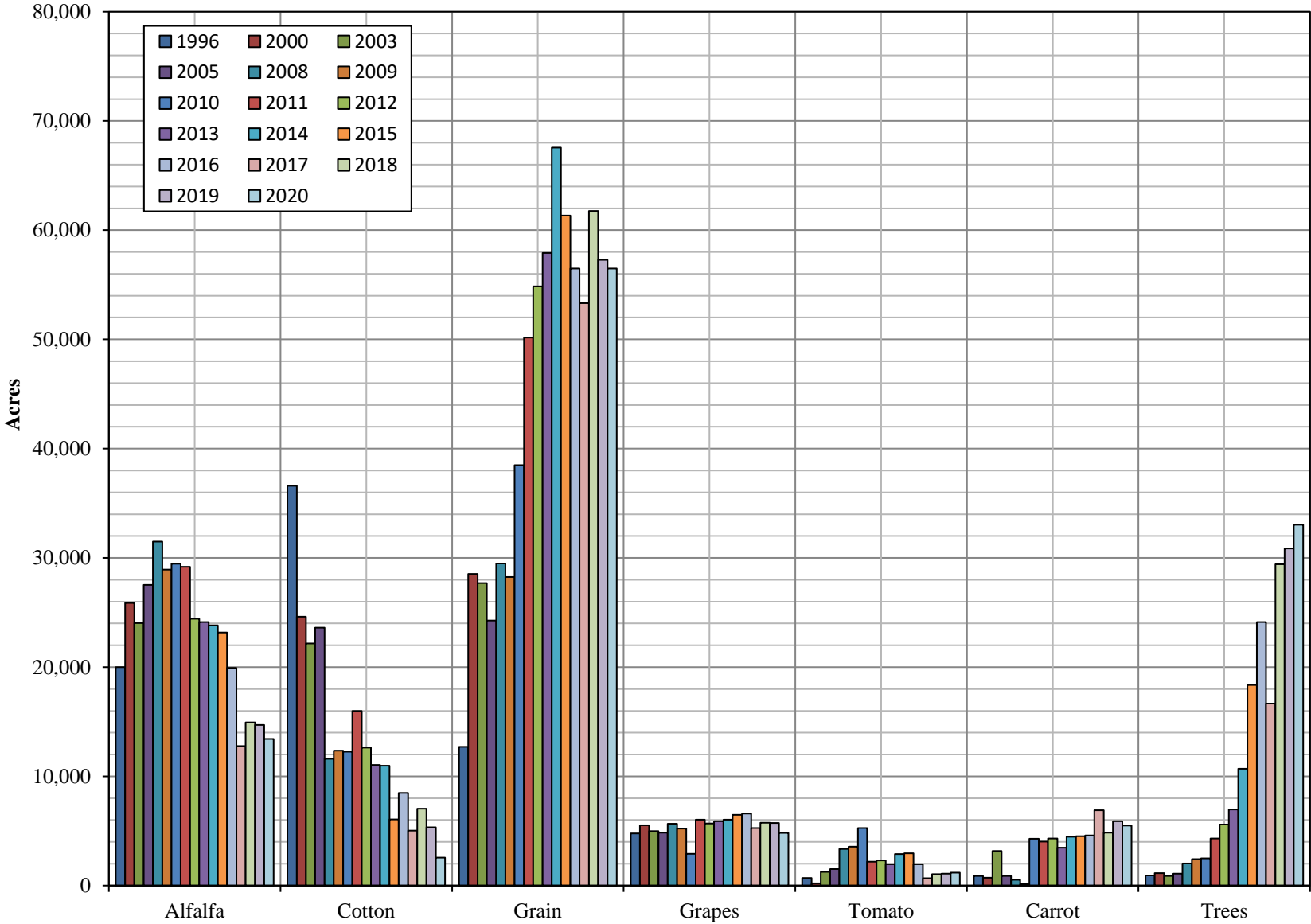
Overall, 91 varieties of crops were grown within the District for the 2020 growing season. The top three commodities produced were wheat, almonds, and corn. Organic crops accounted for 2,609 acres in 2020. While 10,689 acres were fallowed, this could be due to crop rotation and or conversion to permanent crops, namely almonds, or conversion to organic crops.

FIGURES

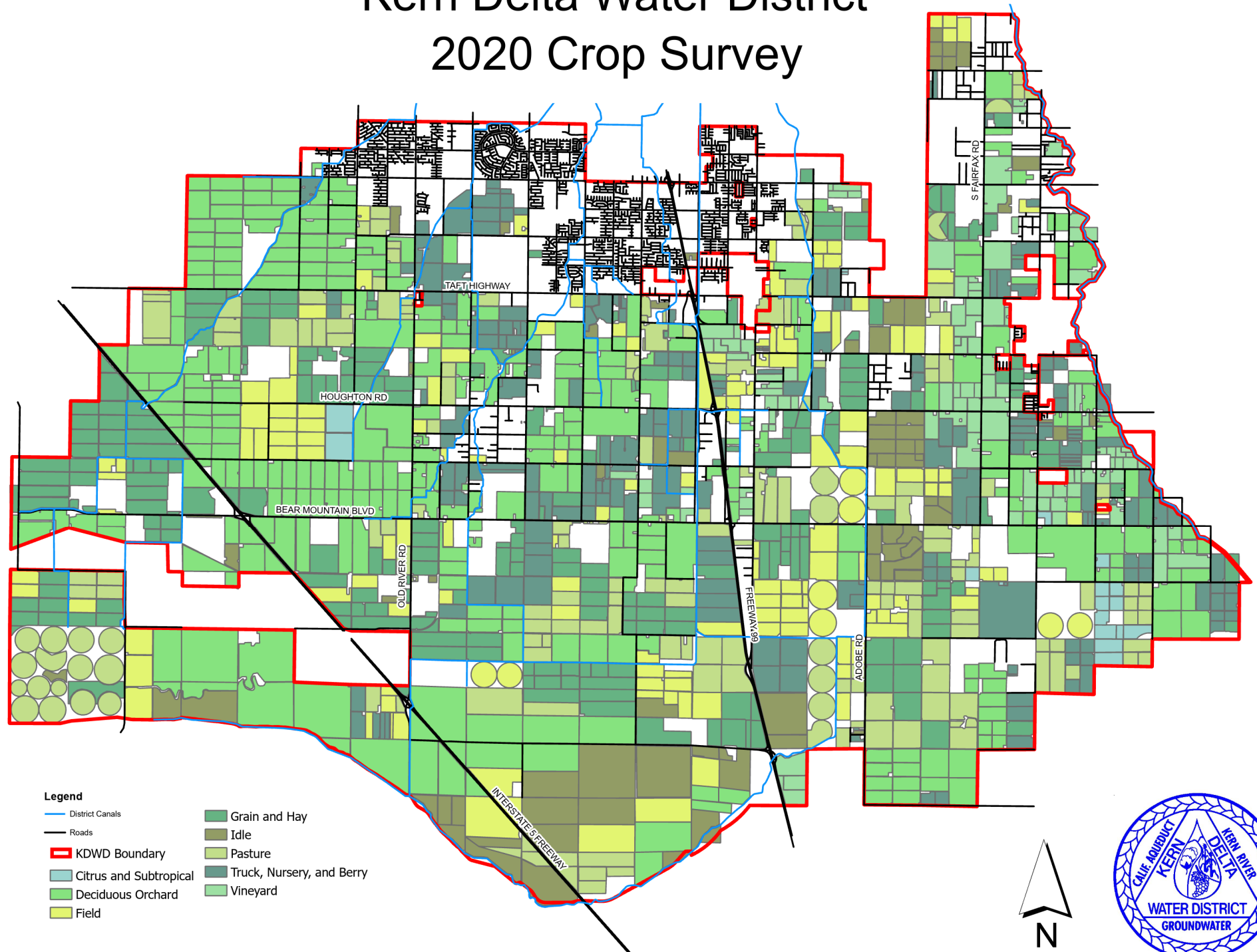
Kern Delta Water District 2020 Crop Production



General Crop Trends Over Time



Kern Delta Water District 2020 Crop Survey



APPENDIX A

**KERN DELTA WATER DISTRICT
CROP REPORT
2020 GROWING SEASON
SUMMARY BY ACREAGE**

COMMODITY	ACREAGE
Wheat	26,630
Almond	19,860
Corn	17,020
Alfalfa	13,417
Pistachio	11,398
Fallow	10,689
Sorghum Milo	7,133
Carrot	5,439
Triticale	4,222
Grape, Table	3,157
Potato	3,147
Cotton	2,567
Bok Choy	1,631
Gai Lon	1,476
Onion, Dry	1,425
Oat	1,262
Tomato	1,161
Industrial Hemp	907
Olive	836
Grape, Wine	820
Garlic	697
Pasture	664
Cabbage	626
Potato, Organic	587
Cilantro	565
Grape, Raisin	523
Pepper, Fruiting	461
Beet	443
Safflower	434
Turnip	419
Watermelon	397
Gai Choy	390
Parsley	390
Dill	366
Sudan Grass	352
Mustard, Organic	346
Spinach	322
Cherry	322

**KERN DELTA WATER DISTRICT
CROP REPORT
2020 GROWING SEASON
SUMMARY BY ACREAGE**

COMMODITY	ACREAGE
Almond, Organic	305
Mustard Greens	302
Grape, Wine Organic	270
Mustard	270
Sweet Basil	263
Sweet Potato	260
Daikon	250
Peas	245
Broccoli	202
Swiss Chard	177
Bean, Dried	172
Turf/Sod	154
Wheat, Organic	152
Kale	145
Celery	120
Nursery	123
Lettuce	103
Love Grass	95
Pepper, Spice	95
Watermelon, Organic	95
Fallow, Organic	83
Oat, Organic	78
Orange	75
Lettuce, Romaine	75
Cauliflower	74
Kohlrabi	74
Fennel	72
Radish	70
Peach	69
Carrot, Organic	67
Garlic, Organic	54
Squash	53
Asparagus	43
Melon	43
Grape, Table Organic	42
Dec. Tree	40
Cantaloupe	35
Squash, Summer	35

**KERN DELTA WATER DISTRICT
CROP REPORT
2020 GROWING SEASON
SUMMARY BY ACREAGE**

COMMODITY	ACREAGE
Apricot	35
Black Berry	35
Musk Melon	35
Nectarine	35
Plum	35
Strawberry	35
Kale, Organic	35
Swiss Chard, Organic	35
Dandelion Green	32
Arugula	30
Onion, Green	30
Lettuce, Organic	30
Cilantro, Organic	29
Parsley, Organic	28
Radish, Organic	28
Rutabaga	23
Lemon	20
Brussel Sprout	16
Rose	15
Eggplant	15
Gourd	15
Squash, Winter	15
Tomato, Organic	15
Broccoli, Organic	15
Cauliflower, Organic	15
Arugula, Organic	15
Bean, Succulent Organic	15
Beets, Red Organic	15
Cabbage, Organic	15
Cantaloupe, Organic	15
Corn, Sweet	15
Cucumber, Organic	15
Dill, Organic	15
Eggplant, Organic	15
Fava Bean	15
Fennel, Organic	15
Herb/Spice, Organic	15
Kohlrabi, Organic	15

**KERN DELTA WATER DISTRICT
CROP REPORT
2020 GROWING SEASON
SUMMARY BY ACREAGE**

COMMODITY	ACREAGE
Melon, Organic	15
Mint, Organic	15
Mustard Greens, Organic	15
Okra, Organic	15
Onion, Dry Organic	15
Onion, Green Organic	15
Peas, Organic	15
Pepper, Fruiting Organic	15
Pepper, Spice Organic	15
Spinach, Organic	15
Squash, Summer Organic	15
Squash, Winter Organic	15
Strawberry, Organic	15
Sweet Basil, Organic	15
Turnip, Organic	15
Squash, Organic	13
Rye Grass	5
Apricot, Organic	.09
Apple, Organic	.09
Total	148,436

APPENDIX B

**KERN DELTA WATER DISTRICT
CROP REPORT
2020 GROWING SEASON
SUMMARY BY TOWNSHIP AND RANGE**

LOCATION	COMMODITY	QUANTITY	UNITS
30S/26E	Total Cultivated Acres		3,530
	Almond	3,004	Acres
	Almond, Organic	305	Acres
	Carrot	148	Acres
	Potato	73	Acres
30S/27E	Total Cultivated Acres		3,015
	Carrot	616	Acres
	Almond	458	Acres
	Potato	411	Acres
	Garlic	285	Acres
	Alfalfa	254	Acres
	Corn	214	Acres
	Turf/Sod	154	Acres
	Potato, Organic	135	Acres
	Watermelon	109	Acres
	Fallow	95	Acres
	Turnip	89	Acres
	Cabbage	60	Acres
	Cotton	45	Acres
	Onion, Dry	39	Acres
	Beet	30	Acres
	Oat	20	Acres
30S/28E	Total Cultivated Acres		6,438
	Wheat	1,243	Acres
	Corn	759	Acres
	Alfalfa	743	Acres
	Almond	711	Acres
	Grape, Table	490	Acres
	Fallow	396	Acres
	Grape, Wine	320	Acres
	Sorghum Milo	275	Acres
	Carrot	228	Acres
	Potato, Organic	223	Acres
	Triticale	123	Acres
	Onion, Dry	80	Acres
	Tomato	80	Acres
	Cotton	75	Acres
	Grape, Raisin	60	Acres

**KERN DELTA WATER DISTRICT
CROP REPORT
2020 GROWING SEASON
SUMMARY BY TOWNSHIP AND RANGE**

LOCATION	COMMODITY	QUANTITY	UNITS
	Love Grass	60	Acres
	Oat	60	Acres
	Oat, Organic	53	Acres
	Asparagus	43	Acres
	Cabbage	43	Acres
	Garlic	43	Acres
	Lettuce	43	Acres
	Melon	43	Acres
	Peas	43	Acres
	Carrot, Organic	40	Acres
	Industrial Hemp	24	Acres
	Lemon	20	Acres
	Orange	20	Acres
	Eggplant	15	Acres
	Gourd	15	Acres
	Pepper, Fruiting	15	Acres
	Pepper, Spice	15	Acres
	Summer Squash	15	Acres
	Winter Squash	15	Acres
	Pasture	8	Acres
30S/29E	Total Cultivated Acres		542
	Almond	326	Acres
	Grape, Raisin	202	Acres
	Grape, Table	12	Acres
	Industrial Hemp	2	Acres
31S/26E	Total Cultivated Acres		27,671
	Wheat	8,911	Acres
	Corn	4,579	Acres
	Sorghum Milo	3,639	Acres
	Almond	3,316	Acres
	Triticale	2,674	Acres
	Pistachio	1,830	Acres
	Alfalfa	1,466	Acres
	Fallow	398	Acres
	Olive	280	Acres
	Sudan Grass	250	Acres
	Carrot	178	Acres

**KERN DELTA WATER DISTRICT
CROP REPORT
2020 GROWING SEASON
SUMMARY BY TOWNSHIP AND RANGE**

LOCATION	COMMODITY	QUANTITY	UNITS
	Cabbage	75	Acres
	Cotton	75	Acres
31S/27E	Total Cultivated Acres		31,264
	Almond	7,880	Acres
	Wheat	6,012	Acres
	Corn	4,160	Acres
	Carrot	2,836	Acres
	Potato	2,172	Acres
	Alfalfa	1,838	Acres
	Onion, Dry	846	Acres
	Sorghum Milo	776	Acres
	Fallow	682	Acres
	Pepper, Fruiting	446	Acres
	Garlic	369	Acres
	Cotton	328	Acres
	Sweet Basil	263	Acres
	Cherry	246	Acres
	Watermelon	218	Acres
	Oat	213	Acres
	Pistachio	208	Acres
	Grape, Table	201	Acres
	Potato, Organic	180	Acres
	Bean, Dried	172	Acres
	Bok Choy	160	Acres
	Cilantro	160	Acres
	Gai Lon	160	Acres
	Tomato	135	Acres
	Beet	116	Acres
	Turnip	107	Acres
	Pepper, Spice	80	Acres
	Watermelon, Organic	80	Acres
	Kale	45	Acres
	Dill	35	Acres
	Triticale	27	Acres
	Pasture	24	Acres
	Rutabaga	21	Acres
	Squash	18	Acres
	Sweet Potato	18	Acres

**KERN DELTA WATER DISTRICT
CROP REPORT
2020 GROWING SEASON
SUMMARY BY TOWNSHIP AND RANGE**

LOCATION	COMMODITY	QUANTITY	UNITS
	Brussel Sprout	16	Acres
	Cabbage	10	Acres
	Dec. Tree	5	Acres
	Tomato, Organic	.25	Acres
	Apple, Organic	.09	Acres
	Apricot, Organic	.09	Acres
	Broccoli, Organic	.09	Acres
	Cauliflower, Organic	.09	Acres
31S/28E	Total Cultivated Acres		30,280
	Corn	4,802	Acres
	Wheat	4,504	Acres
	Alfalfa	3,458	Acres
	Fallow	2,191	Acres
	Almond	1,776	Acres
	Grape, Table	1,597	Acres
	Triticale	1,397	Acres
	Bock Choy	1,397	Acres
	Gai Lon	1,316	Acres
	Industrial Hemp	772	Acres
	Carrot	750	Acres
	Oat	577	Acres
	Gai Choy	390	Acres
	Cotton	386	Acres
	Grape, Wine	356	Acres
	Sorghum Milo	346	Acres
	Potato	291	Acres
	Cabbage	278	Acres
	Mustard	270	Acres
	Pistachio	264	Acres
	Spinach	248	Acres
	Mustard Greens	228	Acres
	Grape, Raisin	219	Acres
	Beet	198	Acres
	Turnip	198	Acres
	Tomato	174	Acres
	Broccoli	128	Acres
	Peas	128	Acres
	Celery	120	Acres

**KERN DELTA WATER DISTRICT
CROP REPORT
2020 GROWING SEASON
SUMMARY BY TOWNSHIP AND RANGE**

LOCATION	COMMODITY	QUANTITY	UNITS
	Daikon	116	Acres
	Cilantro	102	Acres
	Dill	102	Acres
	Kale	100	Acres
	Swiss Chard	75	Acres
	Onion, Dry	60	Acres
	Parsley	54	Acres
	Olive	48	Acres
	Grape, Table Organic	40	Acres
	Radish	40	Acres
	Love Grass	35	Acres
	Fallow, Organic	35	Acres
	Pasture	31	Acres
	Onion, Green	30	Acres
	Cilantro, Organic	29	Acres
	Oat, Organic	25	Acres
	Arugula, Organic	15	Acres
	Bean, Succulent Organic	15	Acres
	Beets, Red Organic	15	Acres
	Broccoli, Organic	15	Acres
	Cabbage, Organic	15	Acres
	Carrot, Organic	15	Acres
	Cantaloupe, Organic	15	Acres
	Cauliflower, Organic	15	Acres
	Corn, Sweet	15	Acres
	Cucumber, Organic	15	Acres
	Dill, Organic	15	Acres
	Eggplant, Organic	15	Acres
	Fava Bean	15	Acres
	Fennel, Organic	15	Acres
	Herb/Spice Organic	15	Acres
	Kale, Organic	15	Acres
	Kohlrabi, Organic	15	Acres
	Lettuce, Organic	15	Acres
	Lettuce, Romaine	15	Acres
	Melon, Organic	15	Acres
	Mint, Organic	15	Acres
	Mustard Greens, Organic	15	Acres
	Okra, Organic	15	Acres
	Onion, Dry Organic	15	Acres

**KERN DELTA WATER DISTRICT
CROP REPORT
2020 GROWING SEASON
SUMMARY BY TOWNSHIP AND RANGE**

LOCATION	COMMODITY	QUANTITY	UNITS
	Onion, Green Organic	15	Acres
	Parsley, Organic	15	Acres
	Peas, Organic	15	Acres
	Pepper, Fruiting Organic	15	Acres
	Pepper, Spice Organic	15	Acres
	Potato, Organic	15	Acres
	Radish, Organic	15	Acres
	Spinach, Organic	15	Acres
	Summer Squash, Org	15	Acres
	Winter Squash, Organic	15	Acres
	Strawberry, Organic	15	Acres
	Sweet Basil, Organic	15	Acres
	Swiss Chard, Organic	15	Acres
	Tomato, Organic	15	Acres
	Turnip, Organic	15	Acres
	Watermelon, Organic	15	Acres
	Rose	11	Acres
	Rye Grass	5	Acres
	Nursery	2	Acres
	Orange	0.10	Acres
31S/29E	Total Cultivated Acres		8,243
	Almond	2,199	Acres
	Carrot	608	Acres
	Grape, Table	606	Acres
	Olive	366	Acres
	Alfalfa	346	Acres
	Oat	282	Acres
	Grape, Wine Organic	270	Acres
	Wheat	257	Acres
	Sorghum Milo	255	Acres
	Sweet Potato	242	Acres
	Potato	200	Acres
	Onion, Dry	175	Acres
	Wheat, Organic	152	Acres
	Mustard, Organic	151	Acres
	Grape, Wine	144	Acres
	Corn	119	Acres
	Nursery	111	Acres
	Tomato	110	Acres
	Swiss Chard	102	Acres
	Industrial Hemp	92	Acres

**KERN DELTA WATER DISTRICT
CROP REPORT
2020 GROWING SEASON
SUMMARY BY TOWNSHIP AND RANGE**

LOCATION	COMMODITY	QUANTITY	UNITS
	Cabbage	86	Acres
	Cherry	76	Acres
	Cilantro	74	Acres
	Dill	74	Acres
	Beet	72	Acres
	Peach	69	Acres
	Daikon	60	Acres
	Lettuce	60	Acres
	Lettuce, Romaine	60	Acres
	Orange	55	Acres
	Garlic, Organic	54	Acres
	Fallow, Organic	48	Acres
	Grape, Raisin	42	Acres
	Cantaloupe	35	Acres
	Apricot	35	Acres
	Black Berry	35	Acres
	Musk Melon	35	Acres
	Nectarine	35	Acres
	Dec. Tree	35	Acres
	Plum	35	Acres
	Squash	35	Acres
	Strawberry	35	Acres
	Watermelon	35	Acres
	Potato, Organic	34	Acres
	Dandelion Greens	32	Acres
	Arugula	30	Acres
	Parsley	30	Acres
	Radish	30	Acres
	Kale, Organic	20	Acres
	Swiss Chard, Organic	20	Acres
	Fallow	17	Acres
	Lettuce, Organic	15	Acres
	Parsley, Organic	13	Acres
	Radish, Organic	13	Acres
	Squash, Organic	13	Acres
	Carrot, Organic	12	Acres

**KERN DELTA WATER DISTRICT
CROP REPORT
2020 GROWING SEASON
SUMMARY BY TOWNSHIP AND RANGE**

LOCATION	COMMODITY	QUANTITY	UNITS
32S/26E	Total Cultivated Acres		5,329
	Pistachio	2,542	Acres
	Alfalfa	1,552	Acres
	Corn	480	Acres
	Fallow	460	Acres
	Cotton	129	Acres
	Oat	110	Acres
	Sorghum Milo	30	Acres
	Wheat	26	Acres
32S/27E	Total Cultivated Acres		19,154
	Fallow	4,778	Acres
	Pistachio	4,623	Acres
	Wheat	3,498	Acres
	Corn	1,476	Acres
	Cotton	1,265	Acres
	Sorghum Milo	1,140	Acres
	Alfalfa	814	Acres
	Pasture	601	Acres
	Safflower	434	Acres
	Almond	189	Acres
	Onion, Dry	145	Acres
	Sudan Grass	102	Acres
	Watermelon	35	Acres
	Beet	27	Acres
	Turnip	25	Acres
	Rutabaga	2	Acres
32S/28E	Total Cultivated Acres		11,982
	Alfalfa	2,449	Acres
	Wheat	2,180	Acres
	Pistachio	1,931	Acres
	Fallow	1,671	Acres
	Sorghum Milo	672	Acres
	Tomato	662	Acres
	Corn	432	Acres
	Parsley	306	Acres
	Cotton	264	Acres
	Grape, Table	251	Acres

**KERN DELTA WATER DISTRICT
CROP REPORT
2020 GROWING SEASON
SUMMARY BY TOWNSHIP AND RANGE**

LOCATION	COMMODITY	QUANTITY	UNITS
	Cilantro	229	Acres
	Dill	155	Acres
	Bok Choy	74	Acres
	Broccoli	74	Acres
	Cabbage	74	Acres
	Cauliflower	74	Acres
	Daikon	74	Acres
	Kohlrabi	74	Acres
	Mustard Greens	74	Acres
	Peas	74	Acres
	Spinach	74	Acres
	Fennel	72	Acres
	Summer Squash	20	Acres
	Industrial Hemp	18	Acres
	Rose	4	Acres
32S/29E	Total Cultivated Acres	990	
	Alfalfa	498	Acres
	Mustard, Organic	195	Acres
	Olive	142	Acres
	Onion, Dry	80	Acres
	Carrot	75	Acres
Total Cultivated Acres		148,436	